

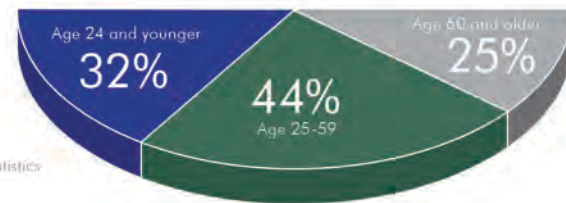
DELTA PROTECTION COMMISSION

SOCIOECONOMIC SUMMARY

POPULATION

In 2015 **582,884** individuals lived in the Delta. The Secondary Zone had **573,483** residents. The Primary Zone had **9,401** residents.

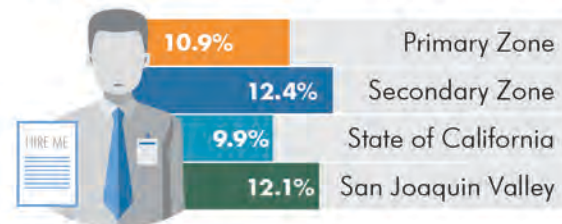
Delta population by age



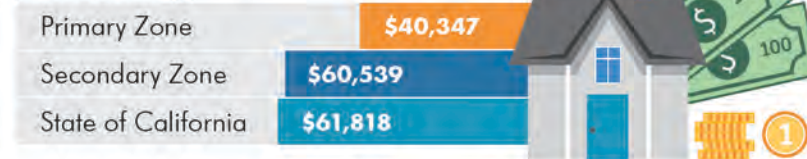
American Community Survey statistics

JOBS AND THE ECONOMY

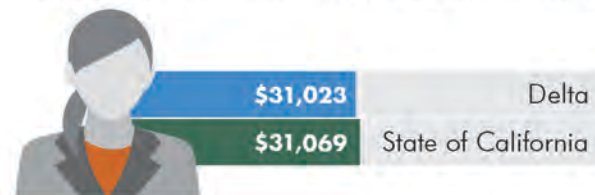
UNEMPLOYMENT RATES: (2011-2015 average)



MEDIAN HOUSEHOLD INCOME: (2011-2015 average)

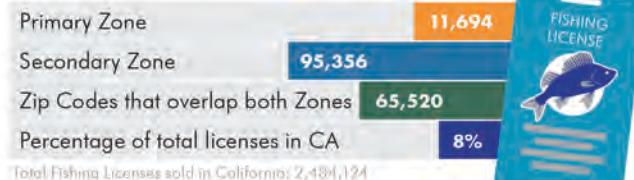
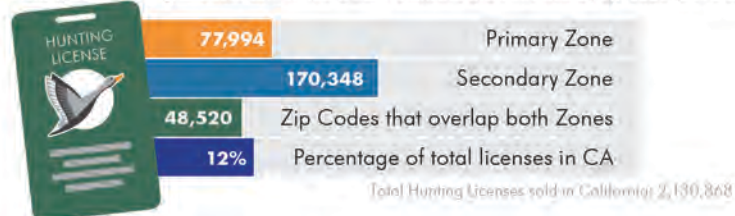


MEDIAN INDIVIDUAL EARNINGS: (2011-2015 average)



RECREATION

Fishing and Hunting Licenses sold in the Delta - statistics are collected by zip code (2015 data)



Zone Map



1,100+ Miles of levees



737,617 Total acres (data source: FMMP 2014)



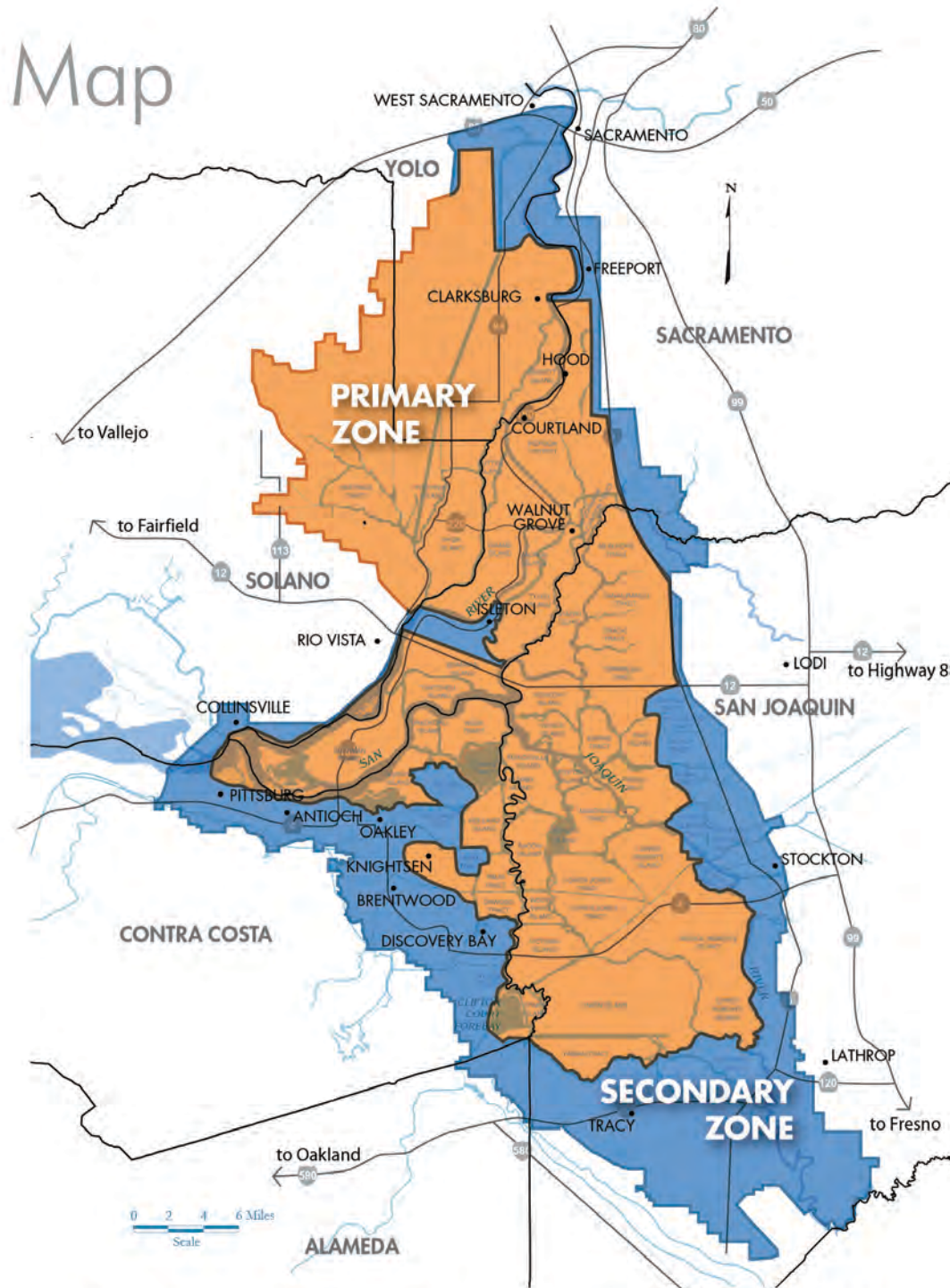
58,487 Total acres of water (data source: FMMP 2014)



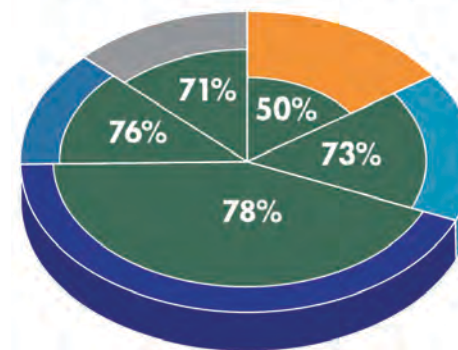
531,772 Total acres in agriculture (data source: FMMP 2014)



78,696 Urban and Built-Up Land (data source: FMMP 2014)



TOTAL DELTA ACRES BY COUNTY



| | |
|---------------------|---------|
| San Joaquin County | 317,456 |
| Sacramento County | 118,465 |
| Contra Costa County | 112,527 |
| Solano County | 92,483 |
| Yolo County | 92,044 |

% of Acres in Agriculture (data source: FMMP 2014)

HOUSING AND ROADS

MEDIAN HOME VALUE



ROAD PAVEMENT CONDITIONS 2016
694.1 highway lane miles assessed by Caltrans

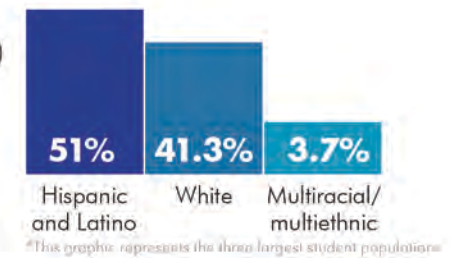


EDUCATION

River Delta School District (Serving much of the primary zone)



12 public schools



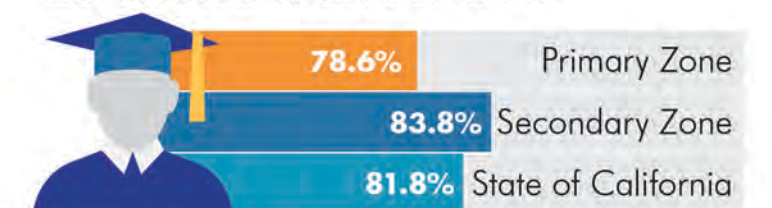
2,547 students

2015 HIGH SCHOOL GRADUATION RATES FROM RIVER DELTA SCHOOL DISTRICT



83.8% of Delta residents aged 25 or older had at least a high school education (2011-2015 average)

RESIDENTS 25 AND OLDER WHO COMPLETED HIGH SCHOOL





2101 Stone Blvd., Suite 240
West Sacramento, California 95691
Phone (916) 375-4800
Fax (916) 376-3962
www.delta.ca.gov

Zone Map statistics for total water, total acres in agriculture, and urban and built-up land were calculated from the Farmland Mapping and Monitoring Program (2014 data).

All other infographic data are assembled from the Socioeconomic Indicators Report: The Sacramento San Joaquin Delta (January 2019). See the full report at: delta.ca.gov/regional_economy/socioeconomic_indicators