



Social and Economic Opportunities in the Sacramento-San Joaquin Delta

November 19, 2015

Chris Benner

UCDAVIS

UCDAVIS
CENTER FOR REGIONAL CHANGE

UC DAVIS

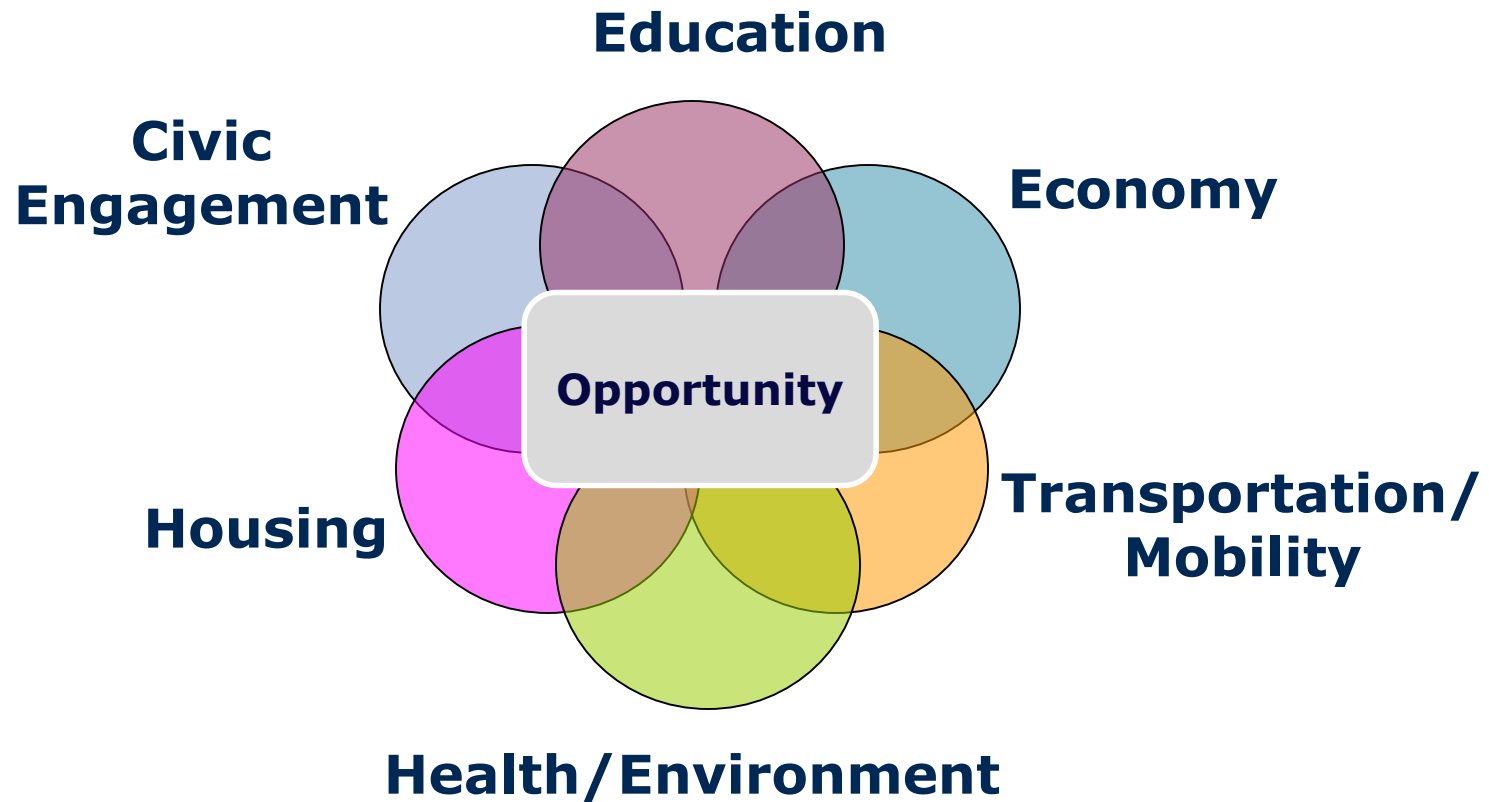
CENTER FOR REGIONAL CHANGE

“Research that Matters for Regions”

Dedicated to producing innovative and collaborative research to inform the building of healthy, prosperous, sustainable and equitable regions in California and beyond.



Comprehensive Vision of Regional Opportunity



ROI Indicators

People

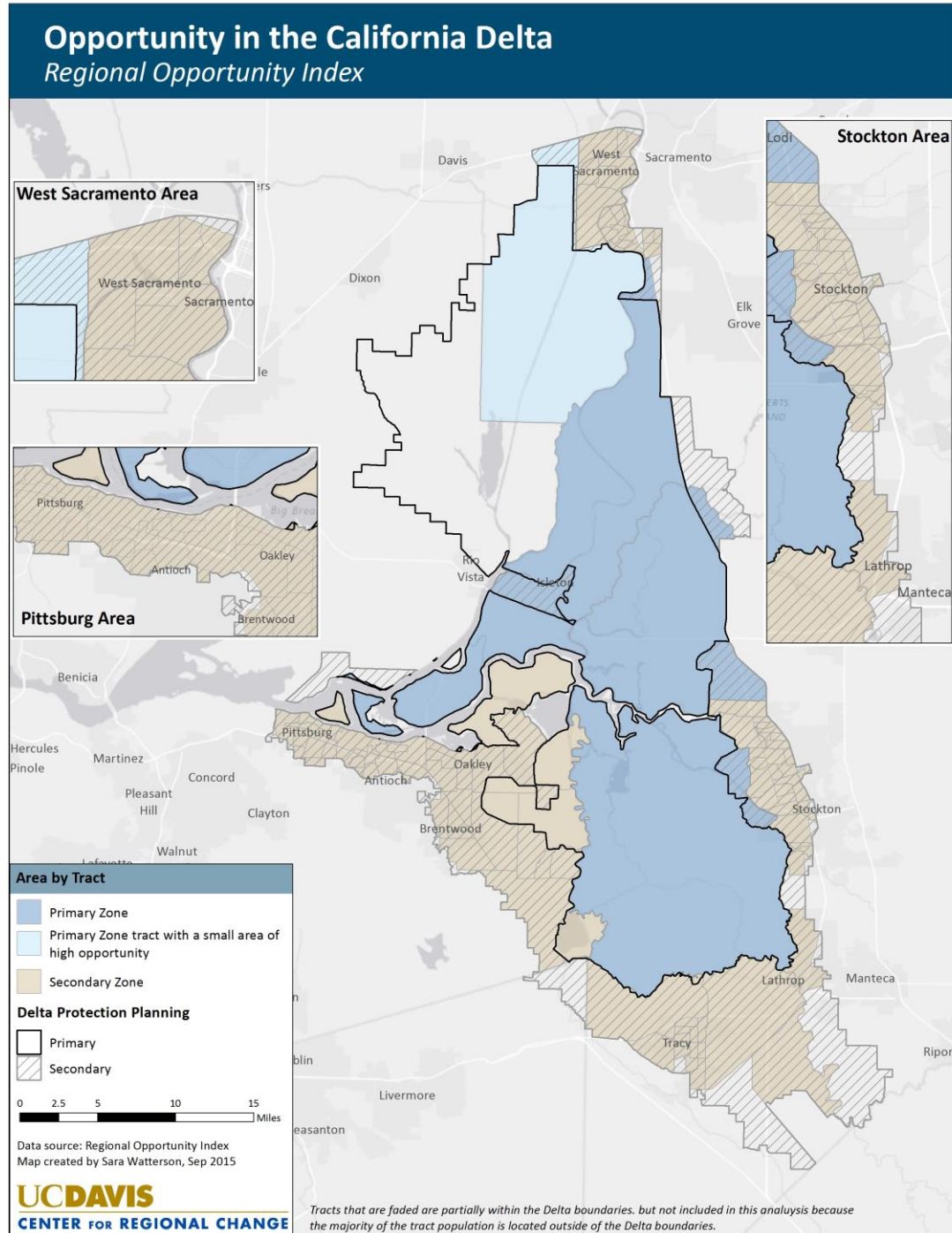
- **Education**
 - % of adults with post-secondary education
 - % 4th graders proficient in ELA
 - % 4th graders proficient in math
 - Elementary school truancy rate
- **Economy**
 - % of adult population employed
 - % of households above 200% FPL
- **Housing**
 - % of households who own home
 - % of households paying <30% of income on housing
- **Mobility/Transportation**
 - % who commute 30 min. or less
 - % households with at least 1 vehicle for worker
 - Households with broadband
- **Health/Environment**
 - % healthy weight babies
 - % births to teens
 - % deaths to <75 year olds
- **Social/Political Engagement**
 - % CVAP that voted in 2010
 - % households not linguistically isolated

Place

- **Education**
 - High school graduation rate
 - High school grads college ready
 - % elementary teachers with 5 years experience and more than BA degree
 - High school suspension and expulsion rate
- **Economy**
 - Jobs within 5 mile radius per 1000 population
 - % jobs that are in high-paying industries within 5 mile radius
 - % job growth in last year within 5 mile radius
 - Banks per 1000 population within 5 mile radius
 - % change in number of employers within 5 mile radius, 2009-2011
- **Housing**
 - % homes with <= 1 occupant per room
 - Ratio of median income to median home value
- **Health/Environment**
 - % mothers receiving prenatal care in first trimester
 - % with access to full-service grocery stores
 - Healthcare provider locations (5 miles) per 1000 population
 - PM2.5 score
- **Social/Political Engagement**
 - % who live in same residence as a year ago

Goals

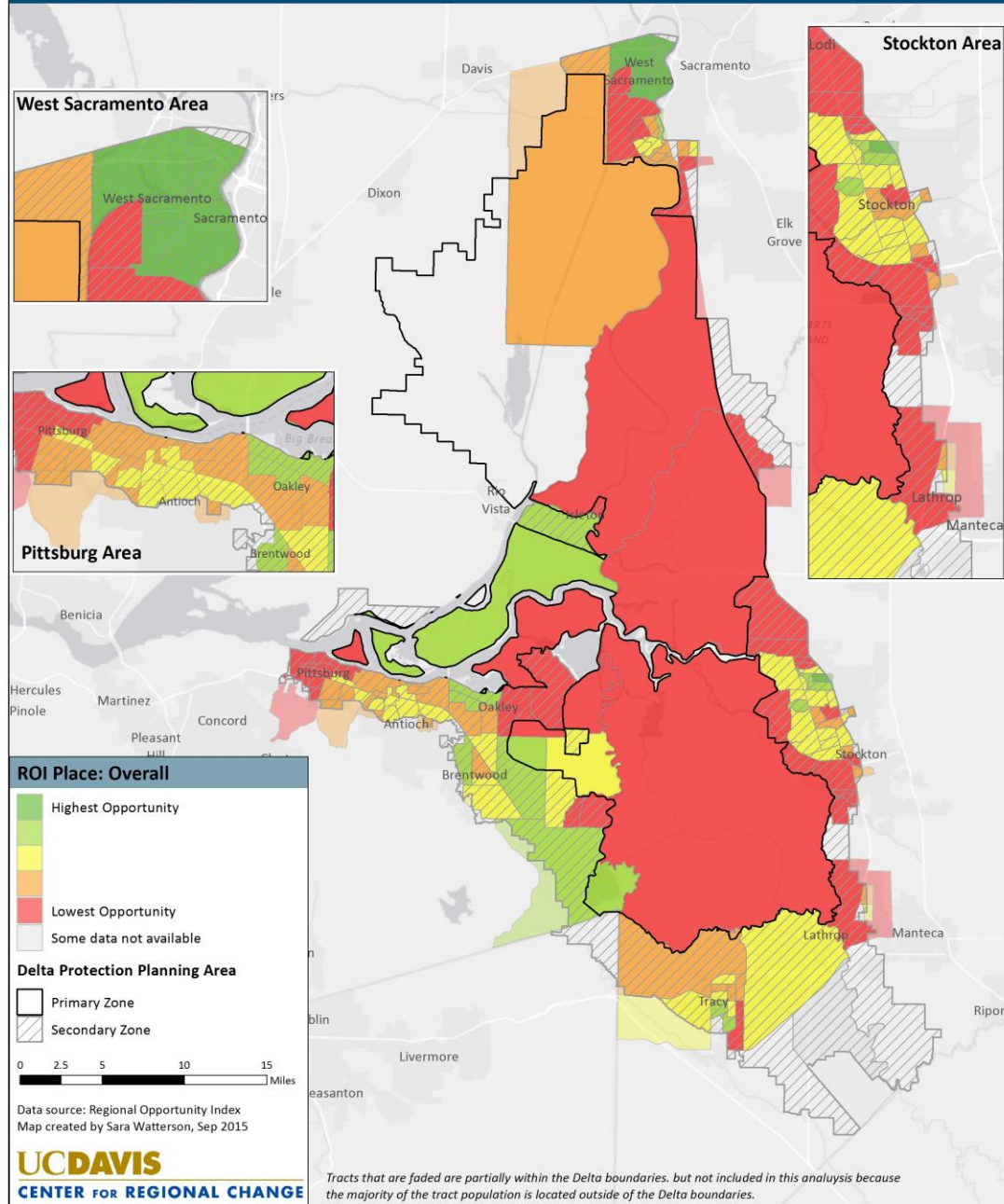
- Overall analysis of socio-economic conditions in the Delta
- Identify and analyze conditions and localities in particular need of focus, including primary and secondary zone
- Identify opportunities for potential community-building support priorities



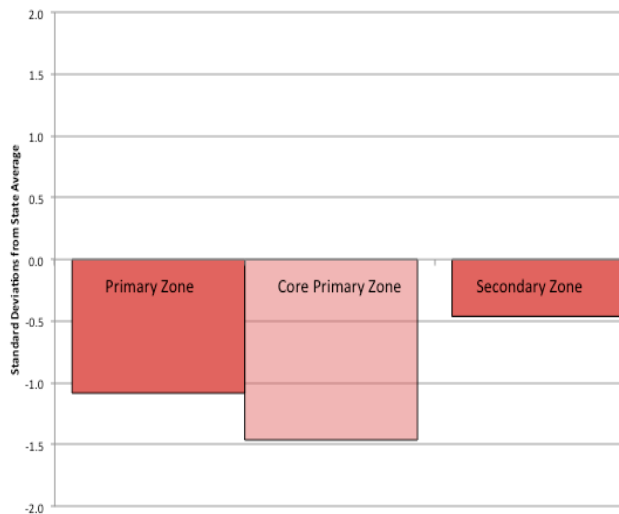
Place: Overall

- Overall opportunity substantially below state average
- Core Primary Delta Zone has particularly low opportunity

Opportunity in the California Delta Regional Opportunity Index



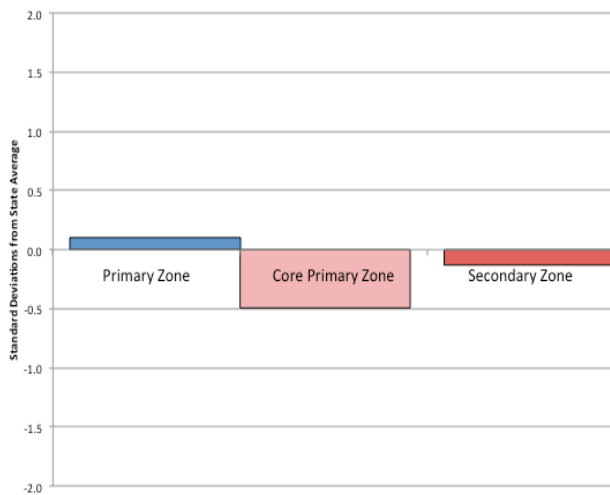
Regional Opportunity Index: Place



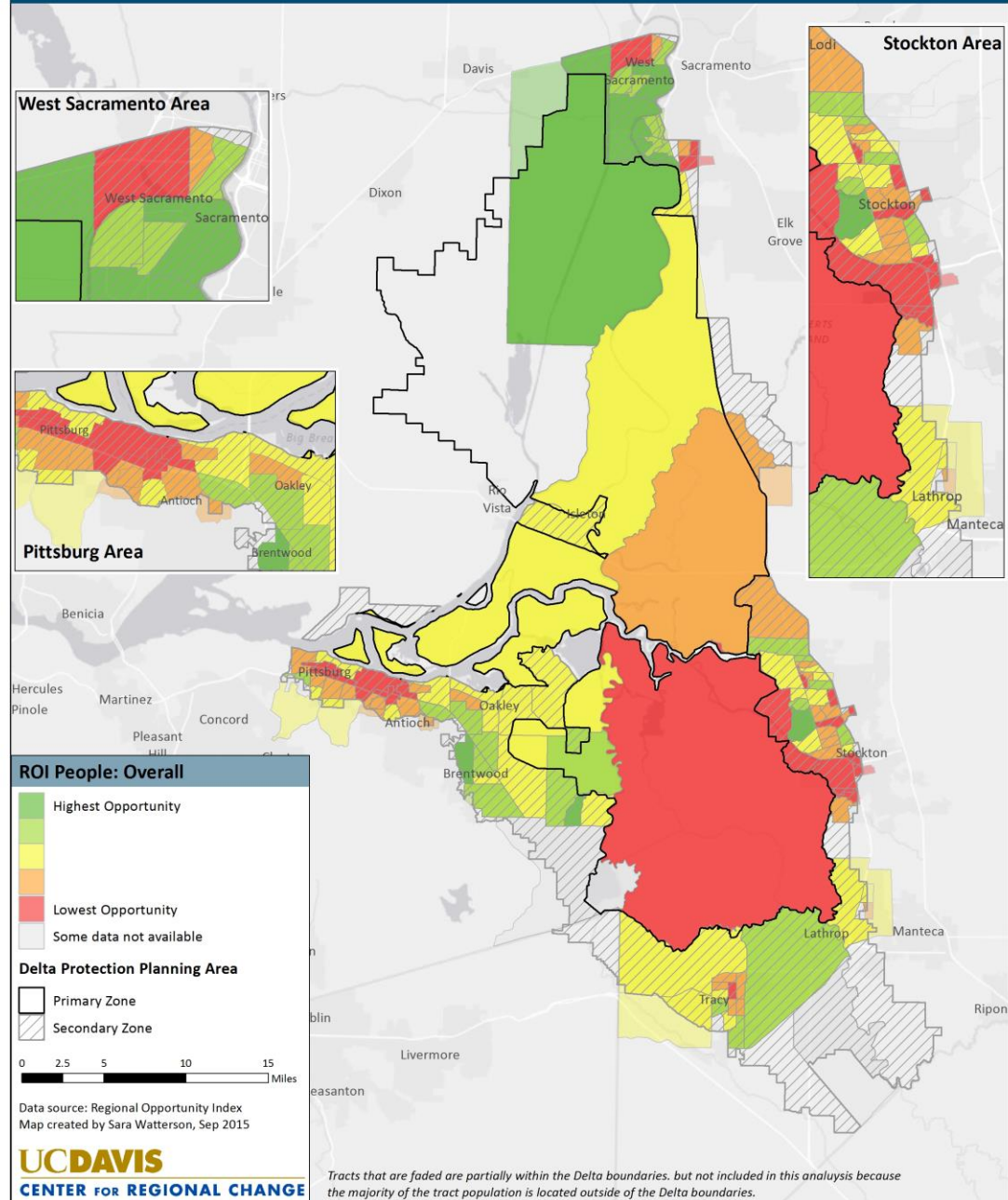
People: Overall

- People living in core Primary Zone are doing significantly worse than average
- People in Secondary Zone doing somewhat lower than average

Regional Opportunity Index: People



Opportunity in the California Delta Regional Opportunity Index

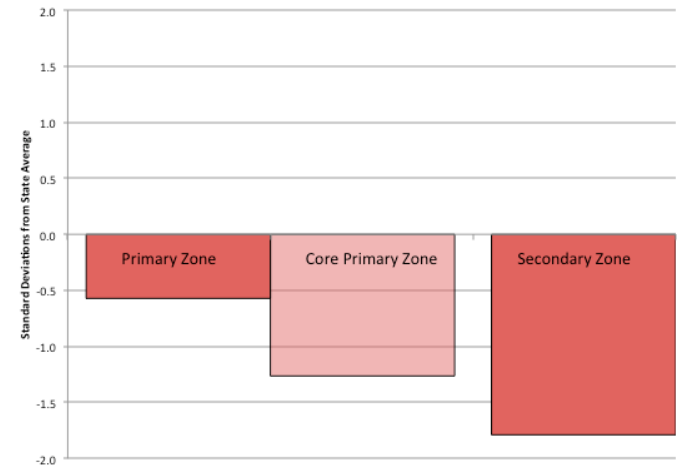


What's Driving Low Place Opportunity?

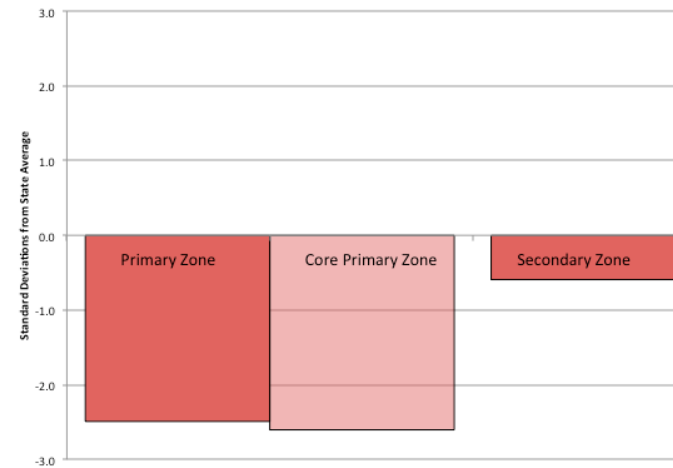
- **Education:**
 - HS Graduate Rates OK, but very low teacher experience and discipline
- **Economy:**
 - Most indicators low, but particularly low job quality and business growth
- **Health:**
 - Low health care availability and prenatal care
- **Housing above average and Civic life about average**



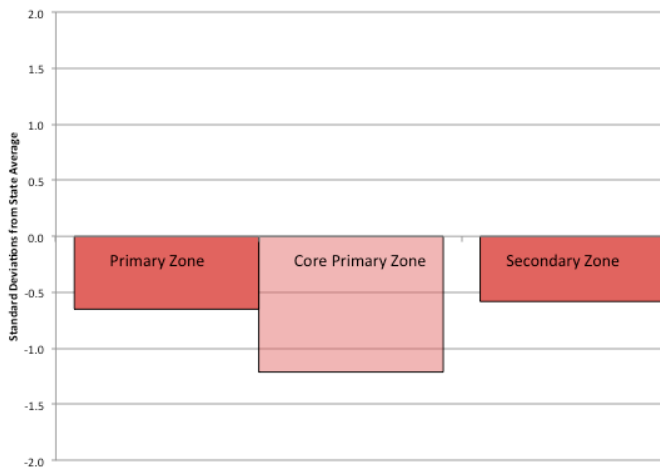
Education Opportunity: Place



Economic Opportunity: Place



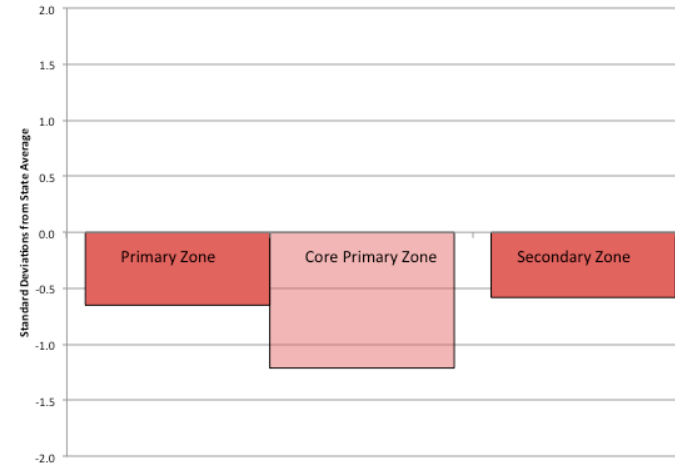
Health/Environment Opportunity: Place



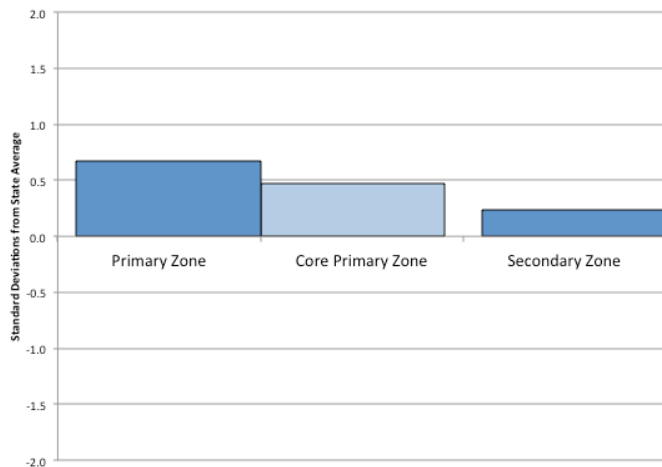
What's Driving Low People Opportunity?--1

- **Education:**
 - All indicators except truancy below average
- **Economy:**
 - Employment levels below average; Wages about average in Secondary Zone, but below in Primary
- **Housing:**
 - Above average

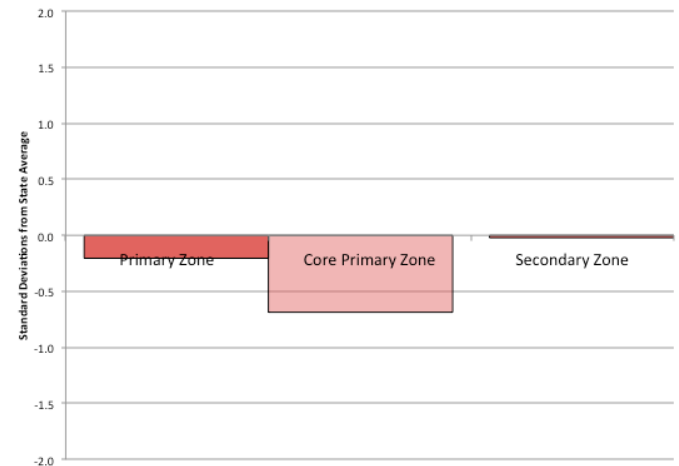
Health/Environment Opportunity: Place



Housing Opportunity: People



Economic Opportunity: People

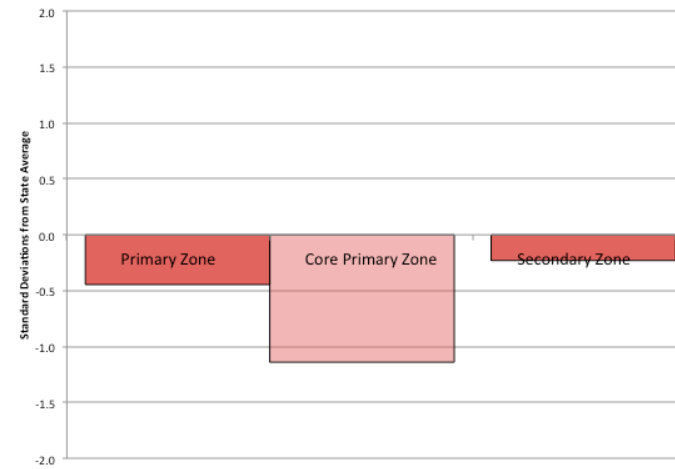


What's Driving Low People Opportunity?--2

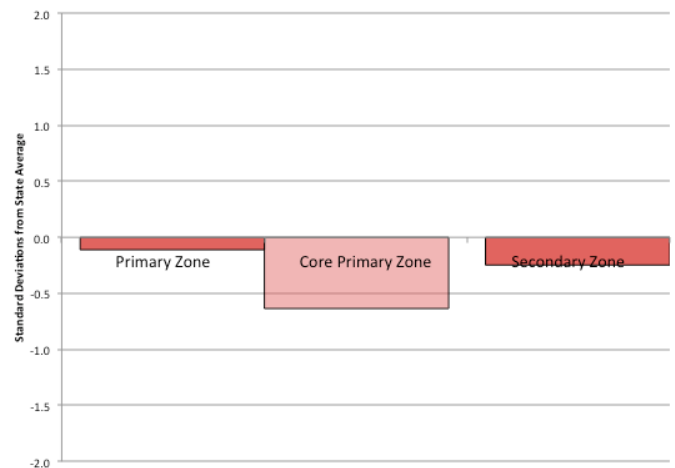
- **Mobility/Transportation:**
 - Low broadband internet access and high commute times
- **Health:**
 - High levels of low-birth weight babies and premature death
- **Civic:**
 - Above average voting rate in Primary Zone, despite low English-speaking population



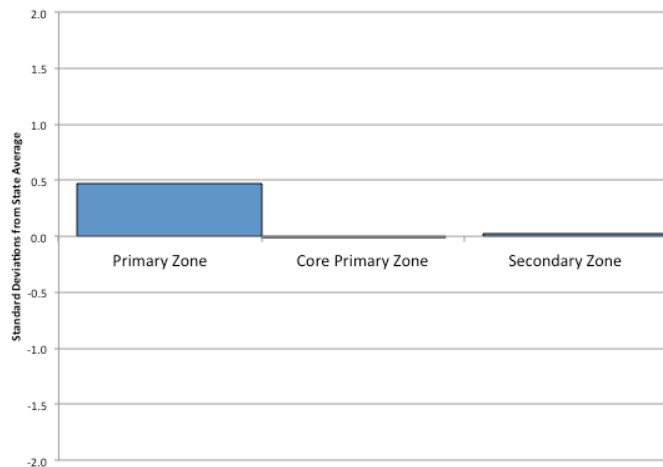
Mobility/Transportation Opportunity: People



Health/Environment Opportunity: People



Civic Life Opportunity: People



Conclusions and Recommended Priorities

- *Region characterized by:*
 - *Substantial education, economic and health challenges*
 - *Strong civic life and solid housing conditions*
- *Development priorities:*
 - *Improve school quality*
 - *Teacher skills*
 - *College readiness*
 - *Disciplinary practices*
 - *Economic Development*
 - *Improve job quality in existing jobs*
 - *Diversify to higher-wage industries*
 - *Expand broadband internet access*
 - *Improving health services*

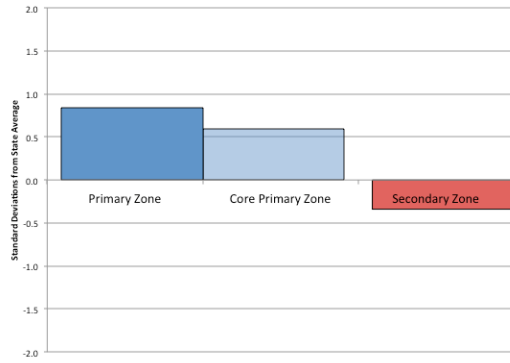


PLACE OPPORTUNITY INDICATORS

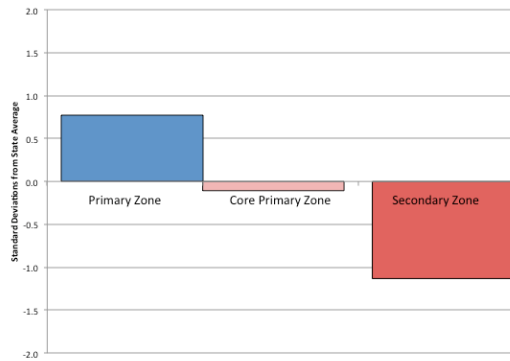
Place: Education

Opportunity in the California Delta Regional Opportunity Index

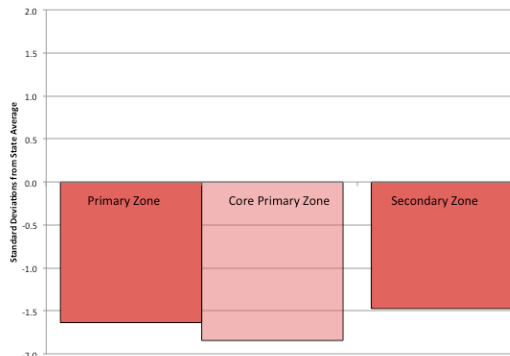
Education-Place: High School Graduation Rate



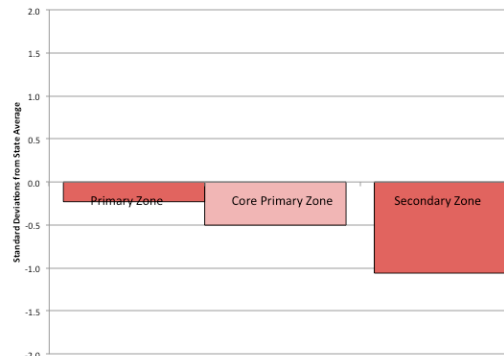
Education-Place: UC/CSU Eligibility



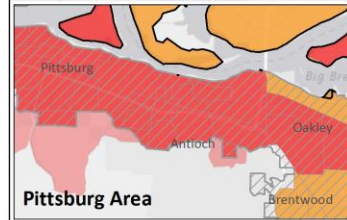
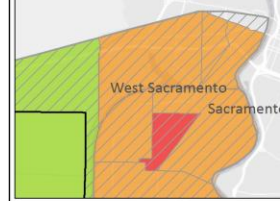
Education-Place: Teacher Experience



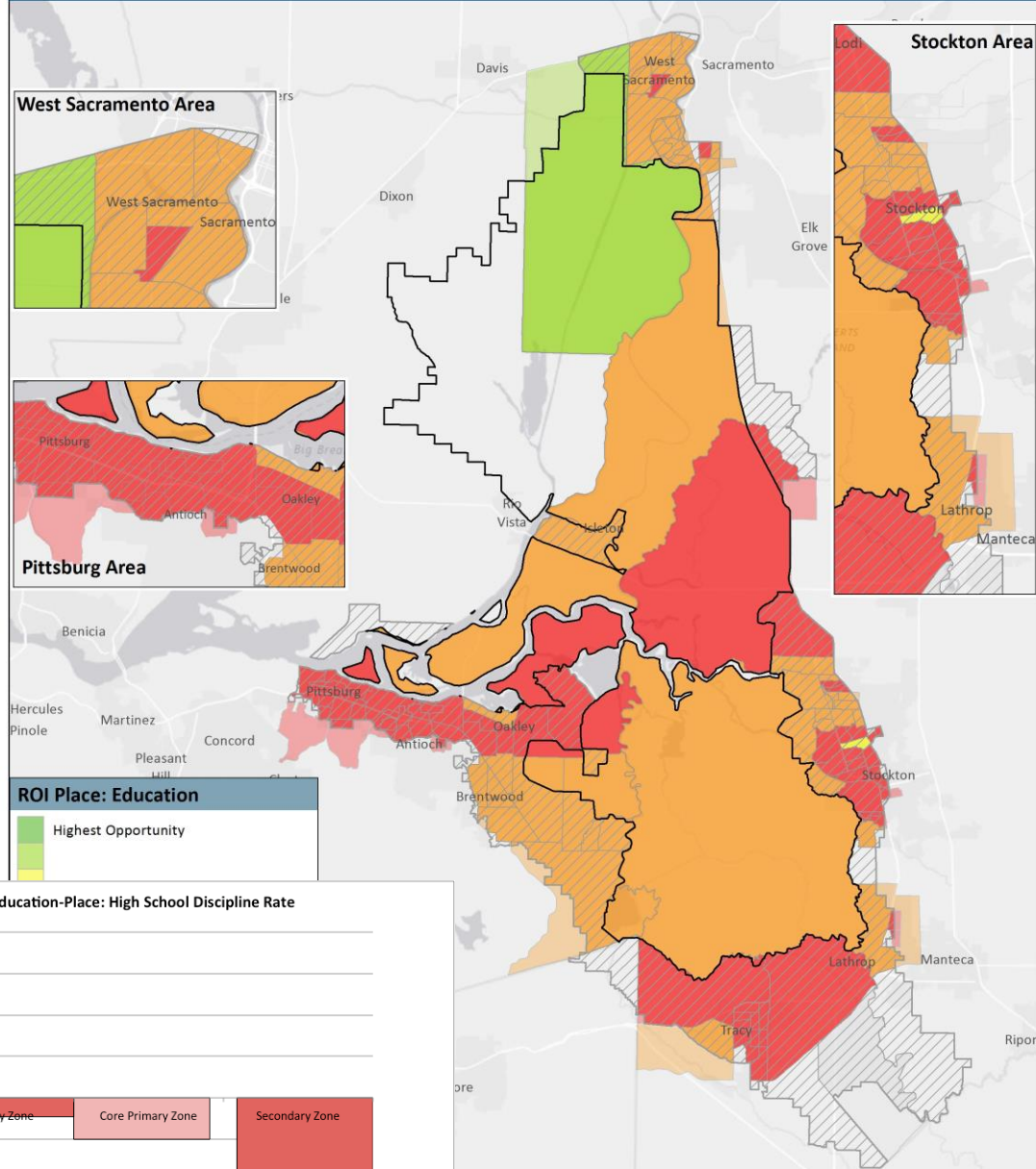
Education-Place: High School Discipline Rate



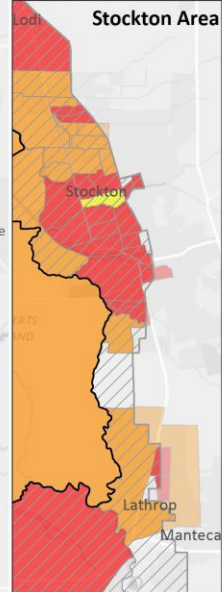
West Sacramento Area



ROI Place: Education



Stockton Area

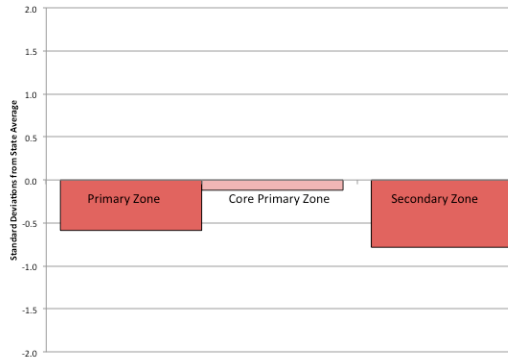


are partially within the Delta boundaries, but not included in this analysis because act population is located outside of the Delta boundaries.

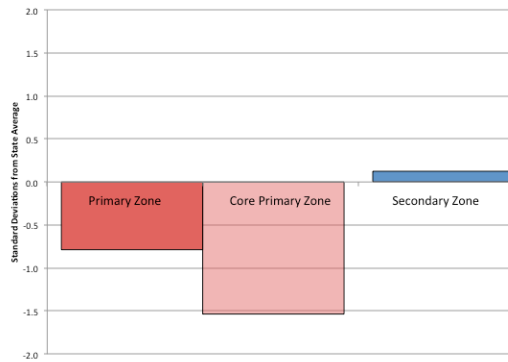
Place: Economy

Opportunity in the California Delta Regional Opportunity Index

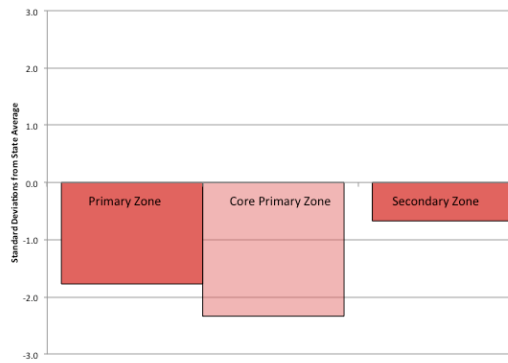
Economy-Place: Job Availability



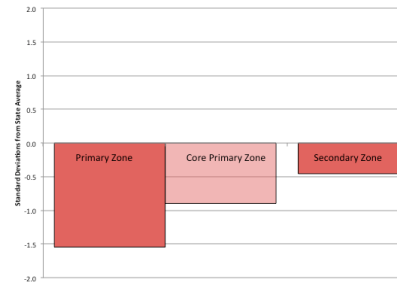
Economy-Place: Job Growth



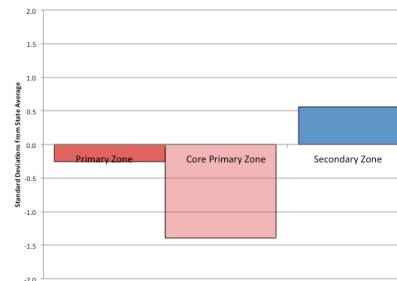
Economy-Place: Job Quality



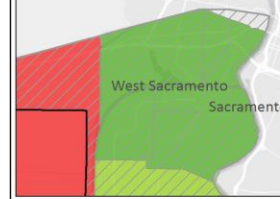
Economy-Place: Bank Accessibility



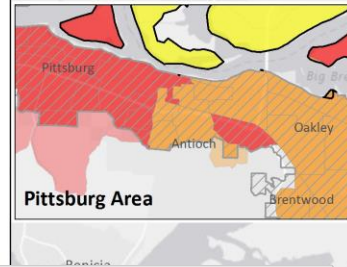
Economy-Place: Business Growth



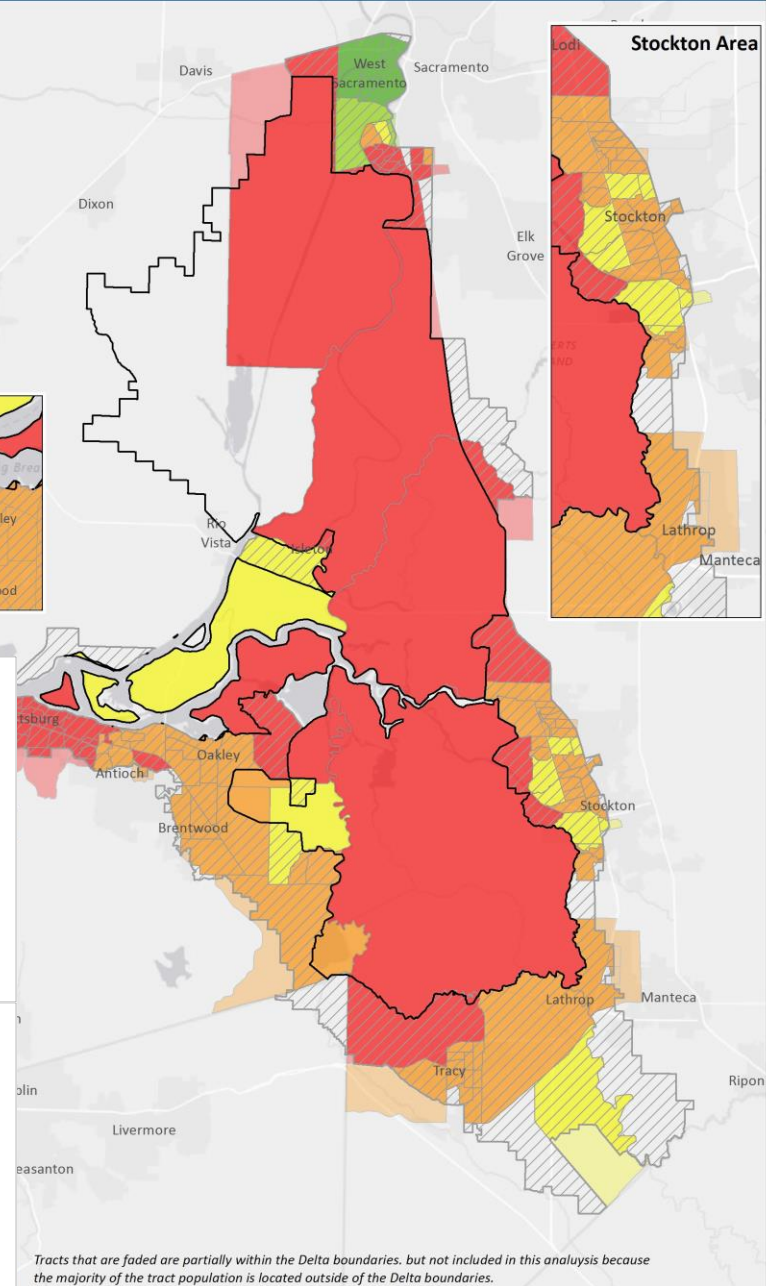
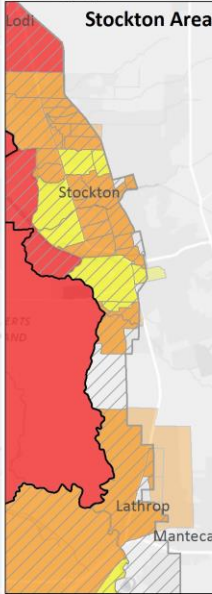
West Sacramento Area



Pittsburg Area



Stockton Area

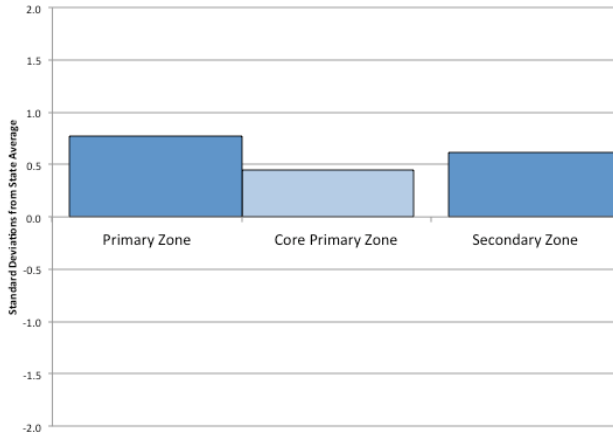


Tracts that are faded are partially within the Delta boundaries, but not included in this analysis because the majority of the tract population is located outside of the Delta boundaries.

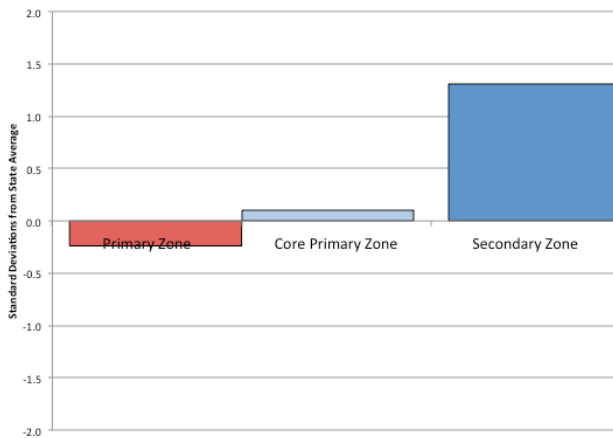
Place: Housing



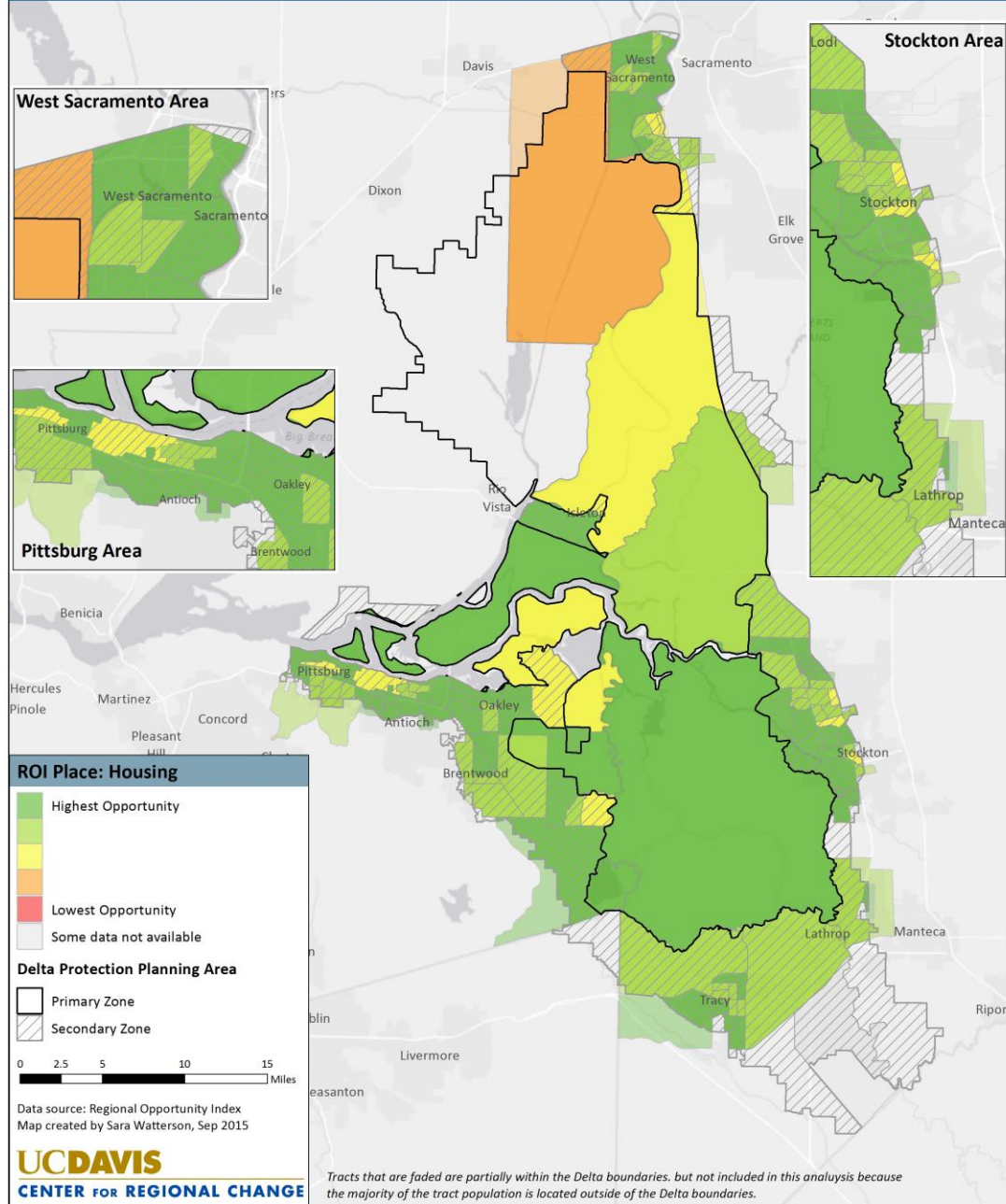
Housing-Place: Housing Adequacy



Housing-Place: Housing Affordability



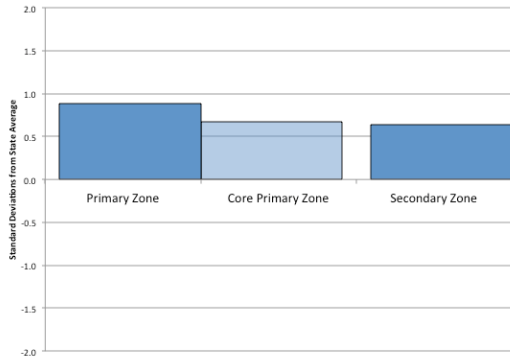
Opportunity in the California Delta Regional Opportunity Index



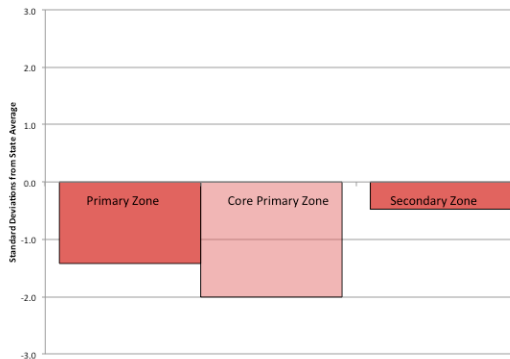
Place: Health/Env

Opportunity in the California Delta Regional Opportunity Index

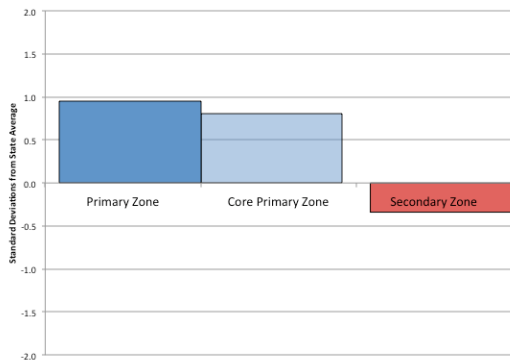
Health/Environment-Place: Air Quality



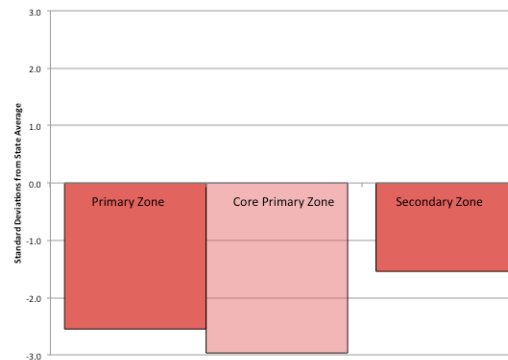
Health/Environment-Place: Prenatal Care



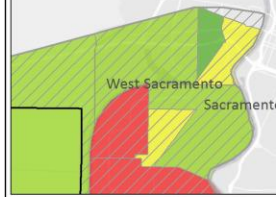
Health/Environment-Place: Access to Supermarket



Health/Environment-Place: Health Care Availability



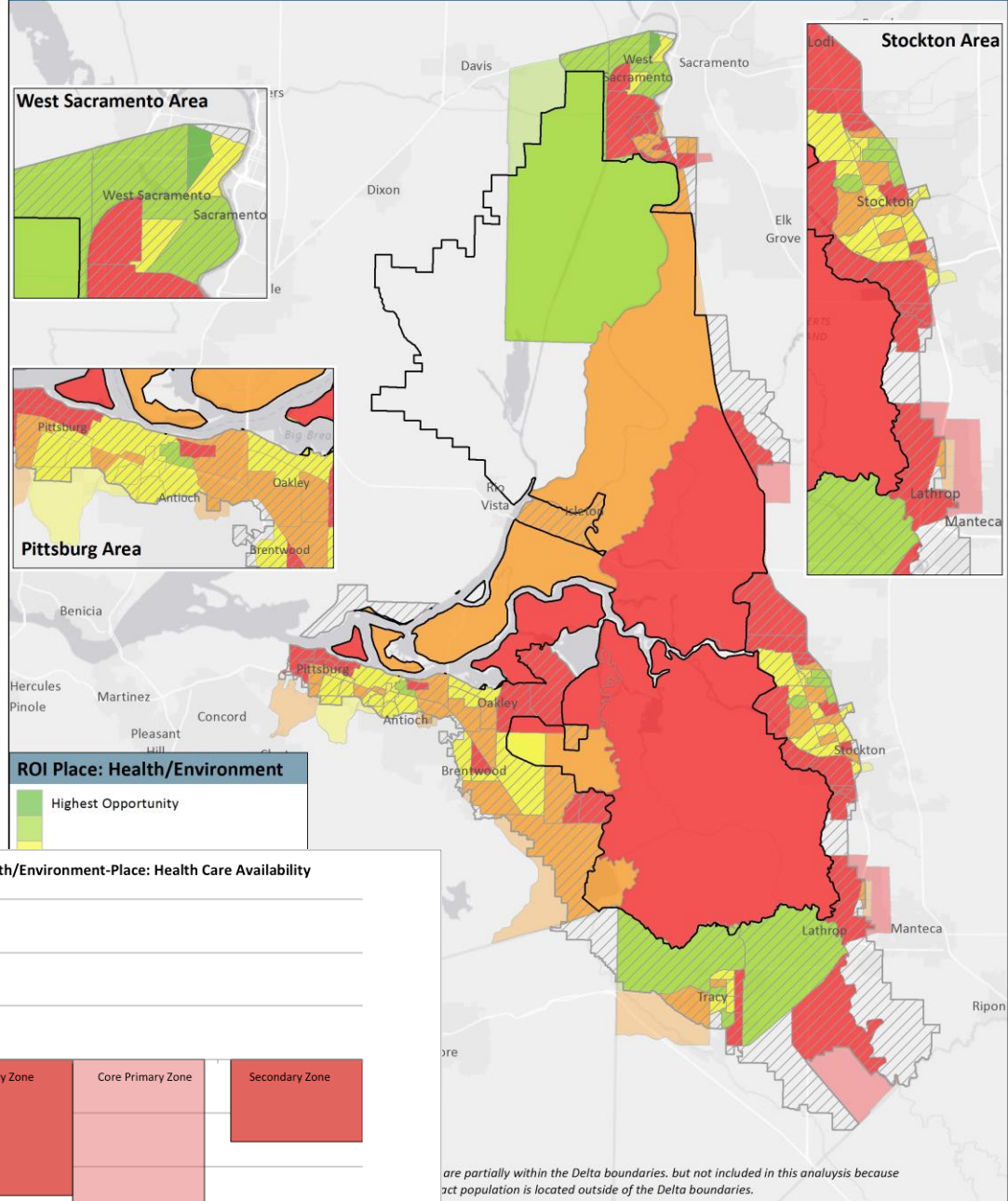
West Sacramento Area



Pittsburg Area



ROI Place: Health/Environment

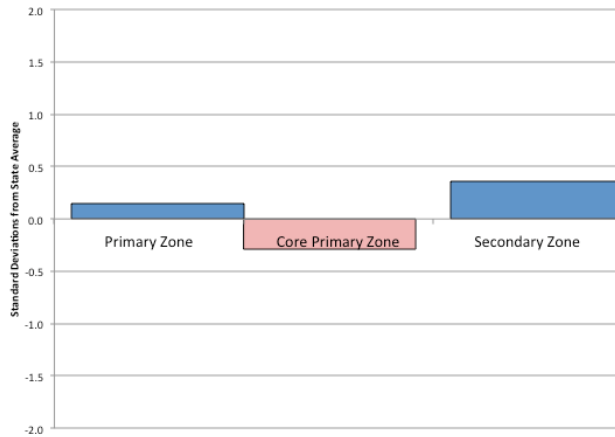


are partially within the Delta boundaries, but not included in this analysis because exact population is located outside of the Delta boundaries.

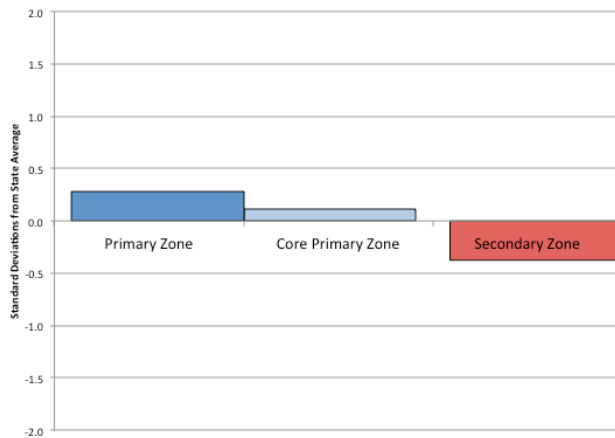
Place: Civic Life



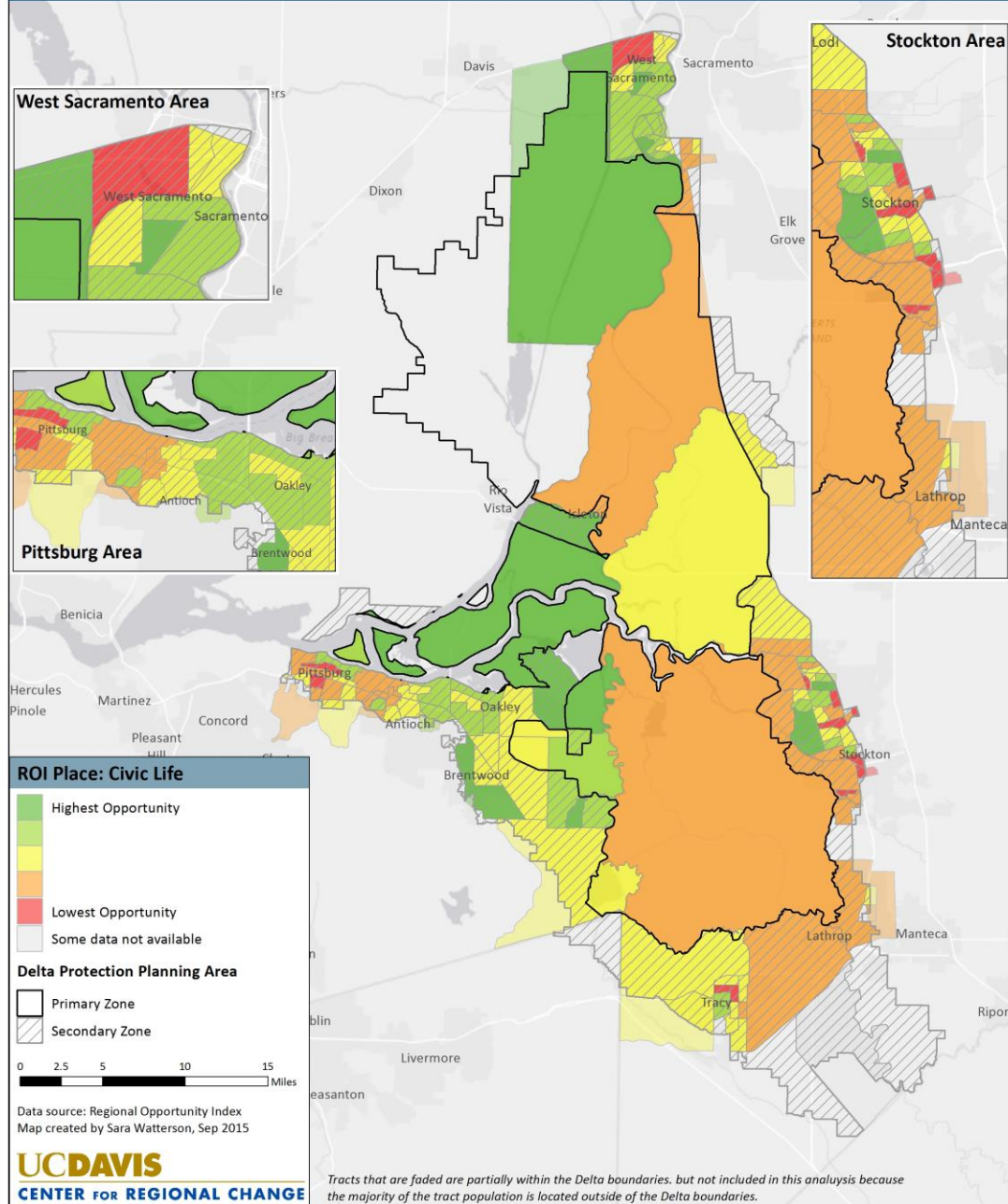
Civic Life-Place: US Citizenship



Civic Life-Place: Neighborhood Stability



Opportunity in the California Delta Regional Opportunity Index



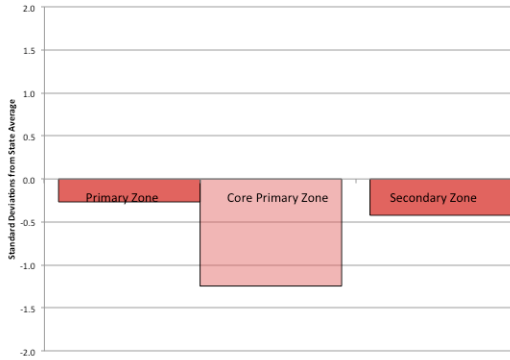


PEOPLE OPPORTUNITY INDICATORS

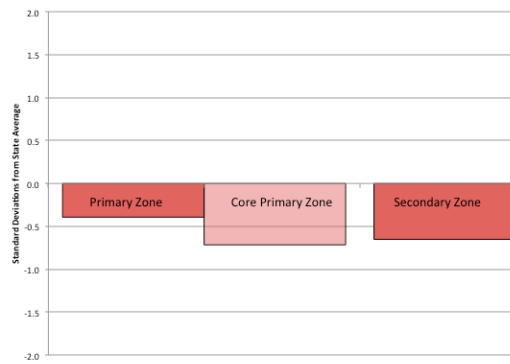
People: Education

Opportunity in the California Delta Regional Opportunity Index

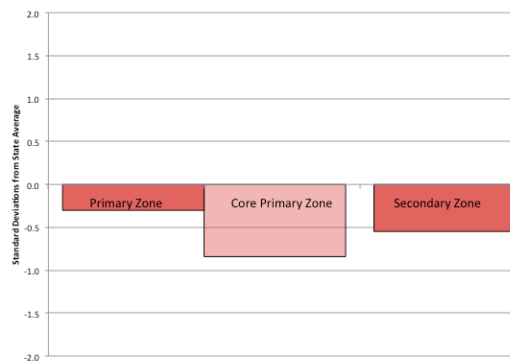
Education-People: College-Educated Adults



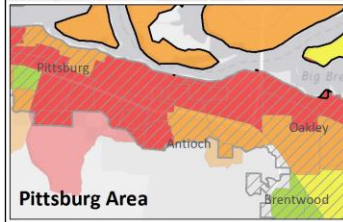
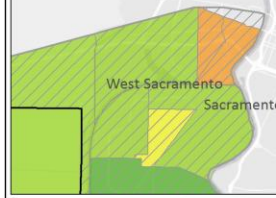
Education-People: Math Proficiency



Education-People: English Proficiency



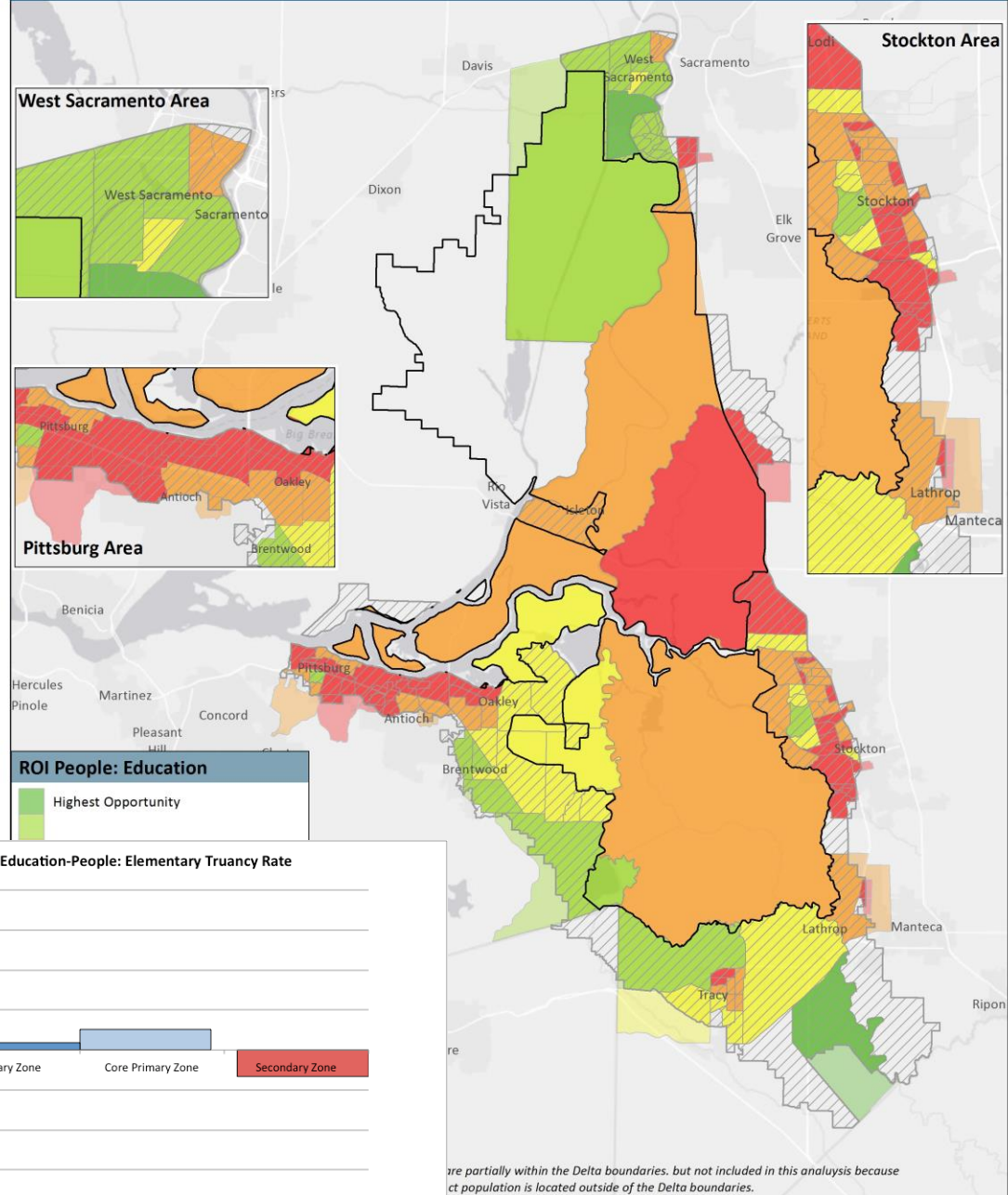
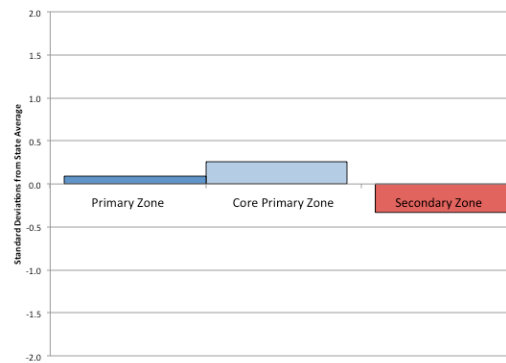
West Sacramento Area



ROI People: Education

Highest Opportunity

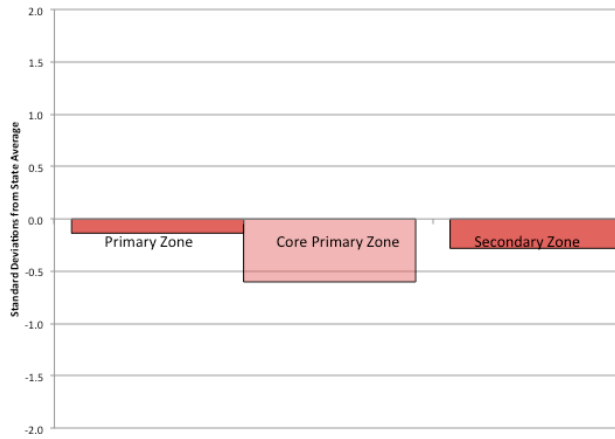
Education-People: Elementary Truancy Rate



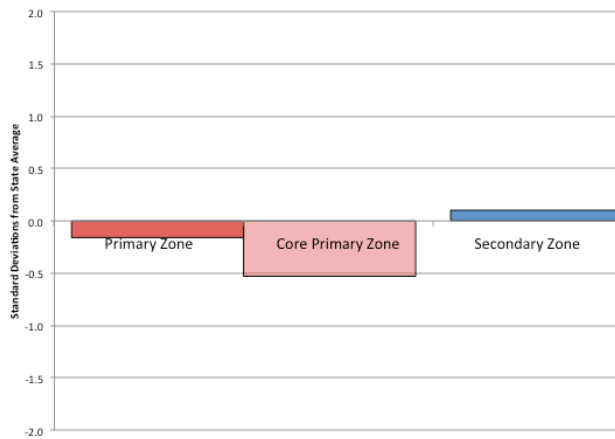
People: Economy



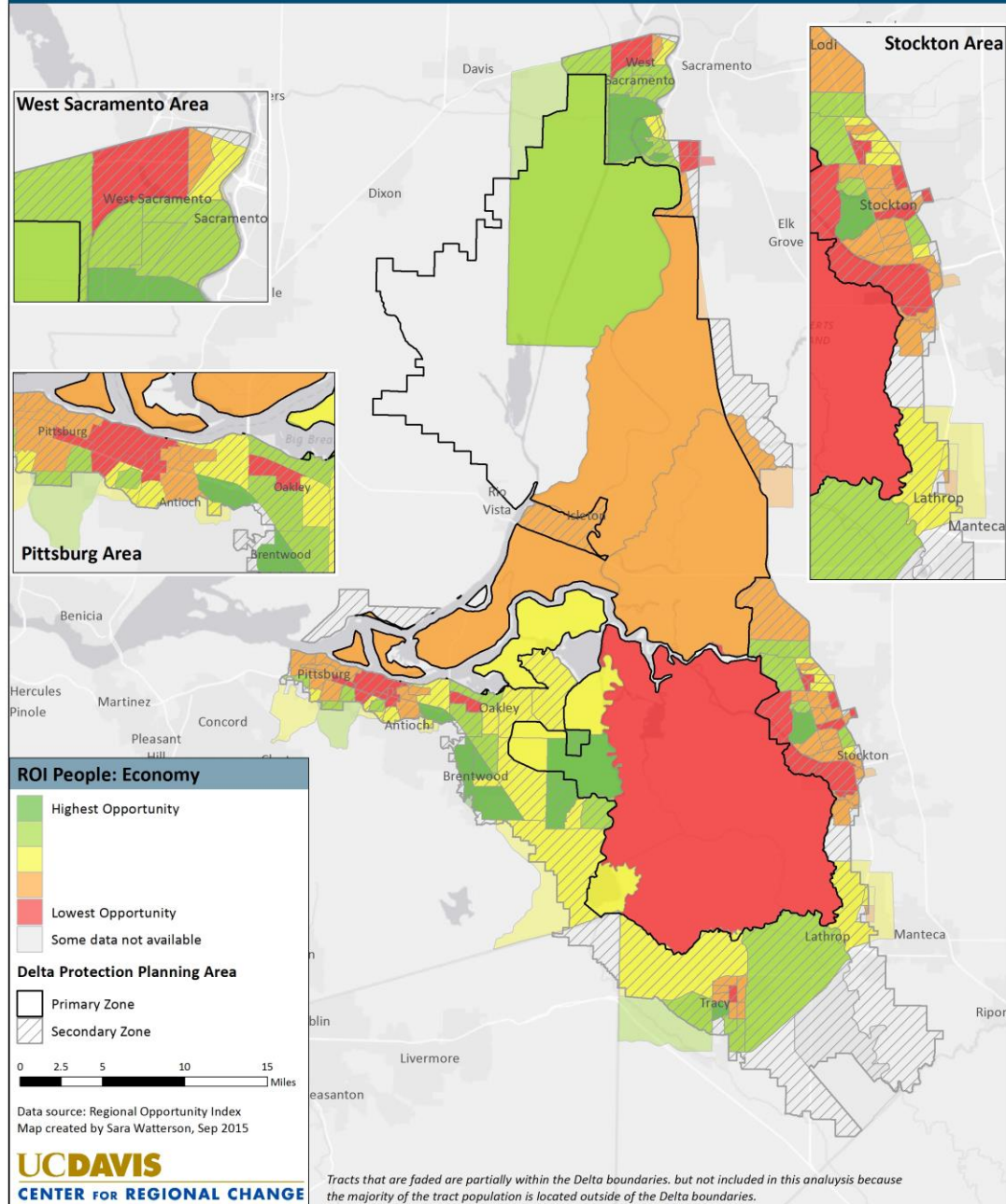
Education-People: Employment Rate



Economy-People: Minimum Basic Income



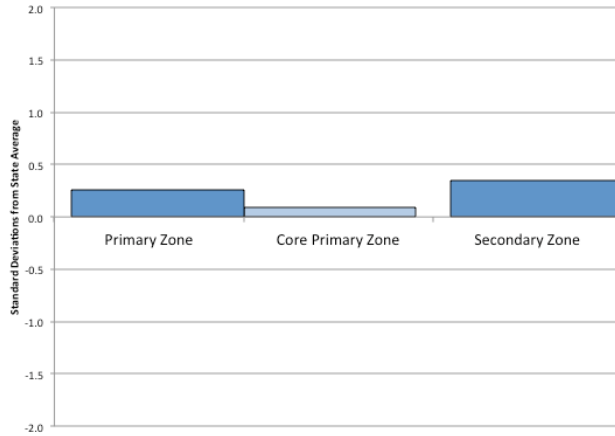
Opportunity in the California Delta Regional Opportunity Index



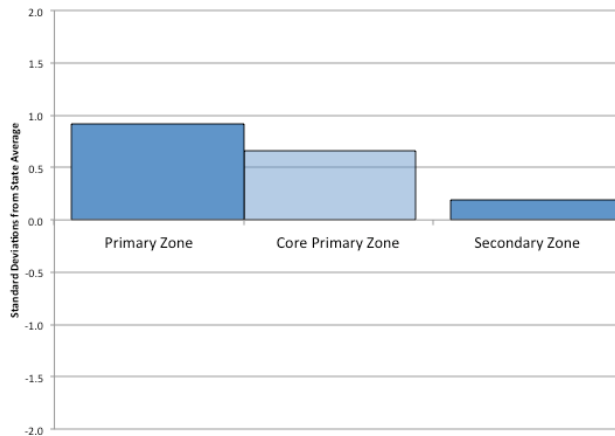
People: Housing



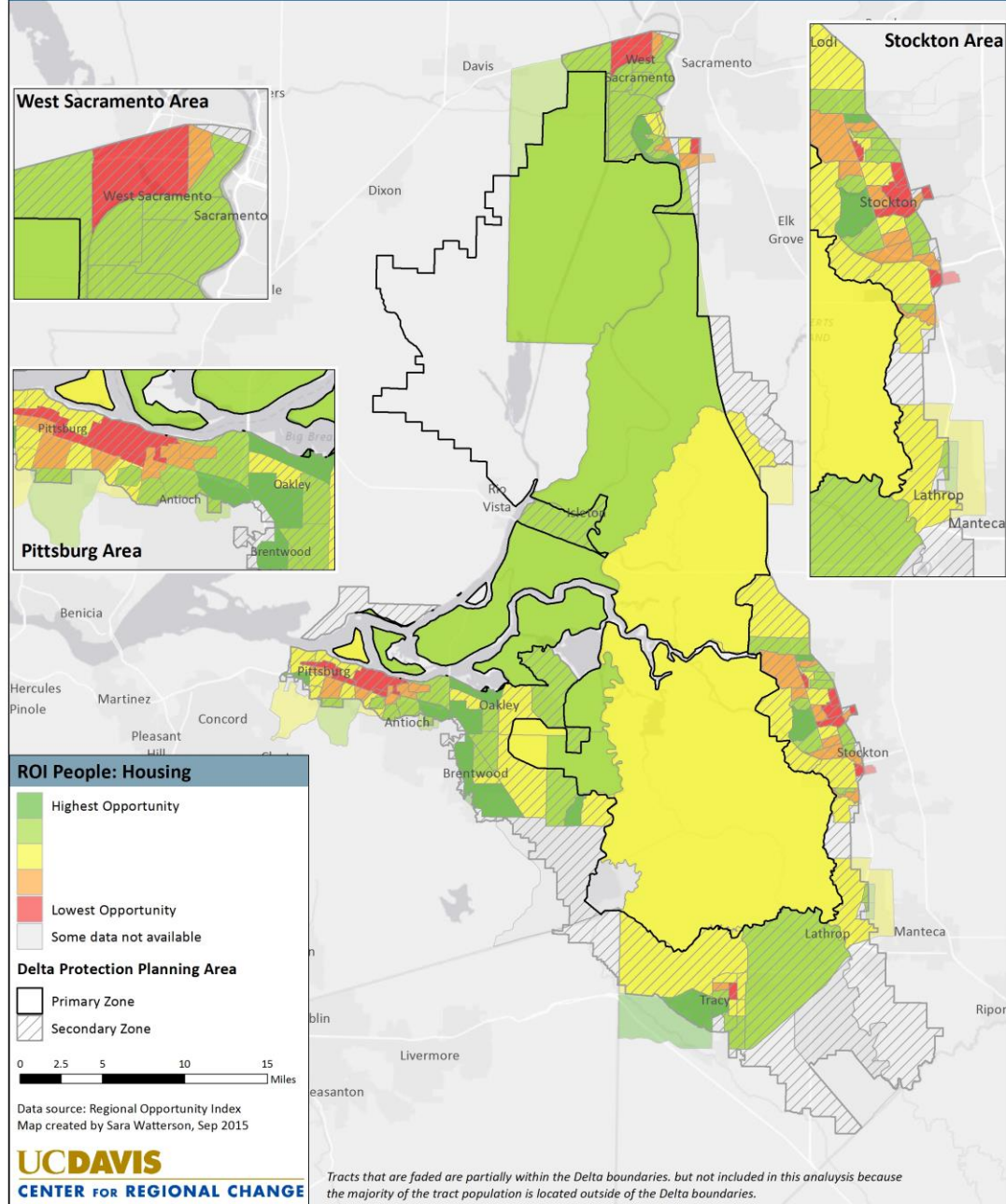
Housing-People: Home Ownership



Housing-People: Housing Cost Burden

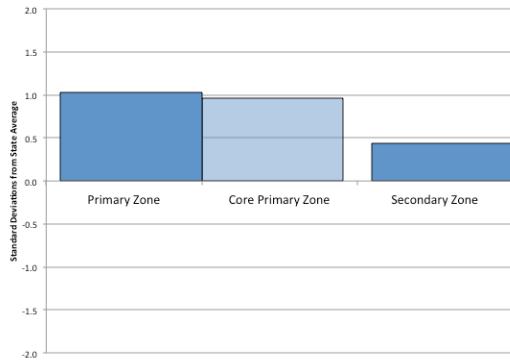


Opportunity in the California Delta Regional Opportunity Index

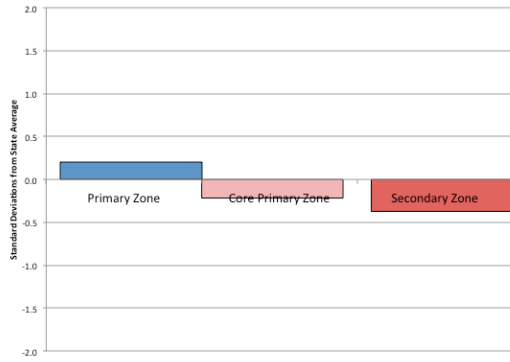


People: Mobility/Trans

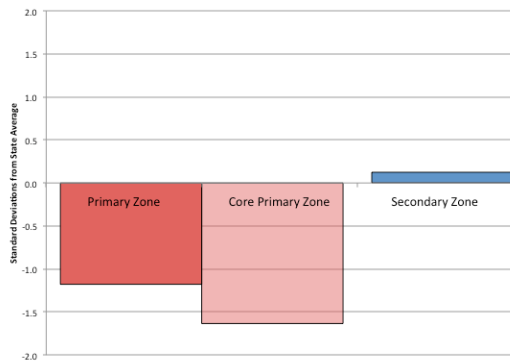
Mobility/Transportation-People: Vehicle Availability



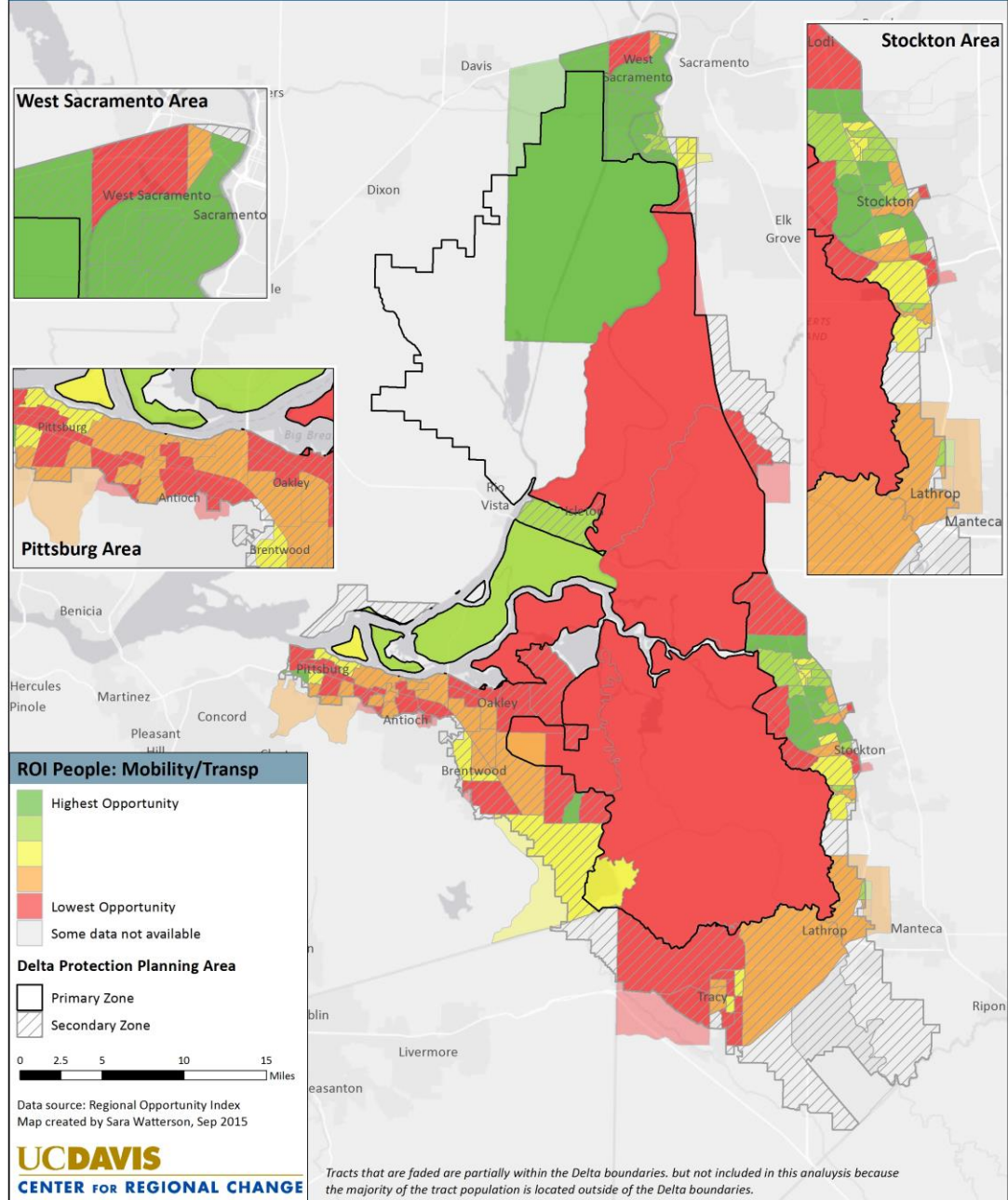
Mobility/Transportation-People: Commute Time



Mobility/Transportation-People: Internet Access

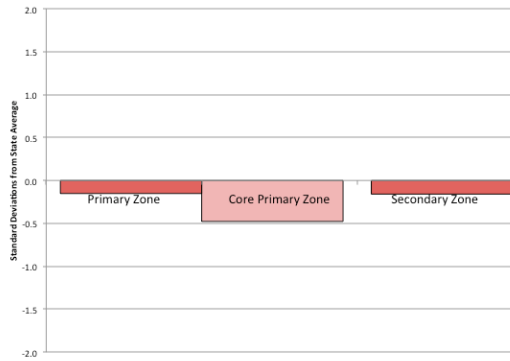


Opportunity in the California Delta Regional Opportunity Index

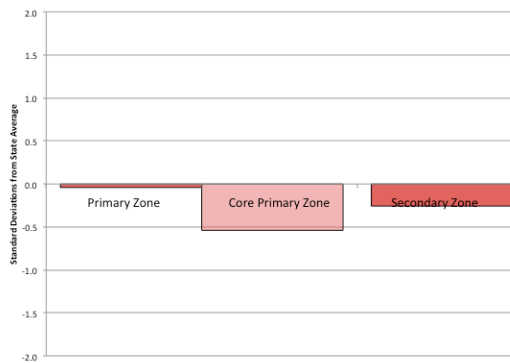


People: Health/Env

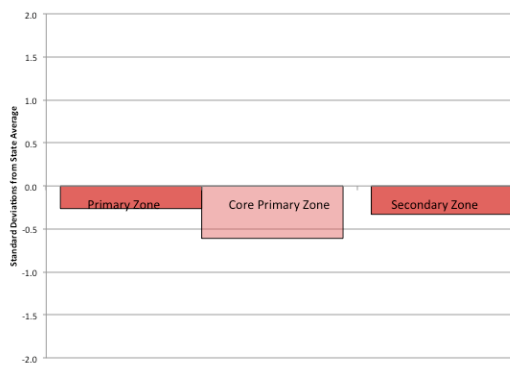
Health/Environment-People: Infant Health



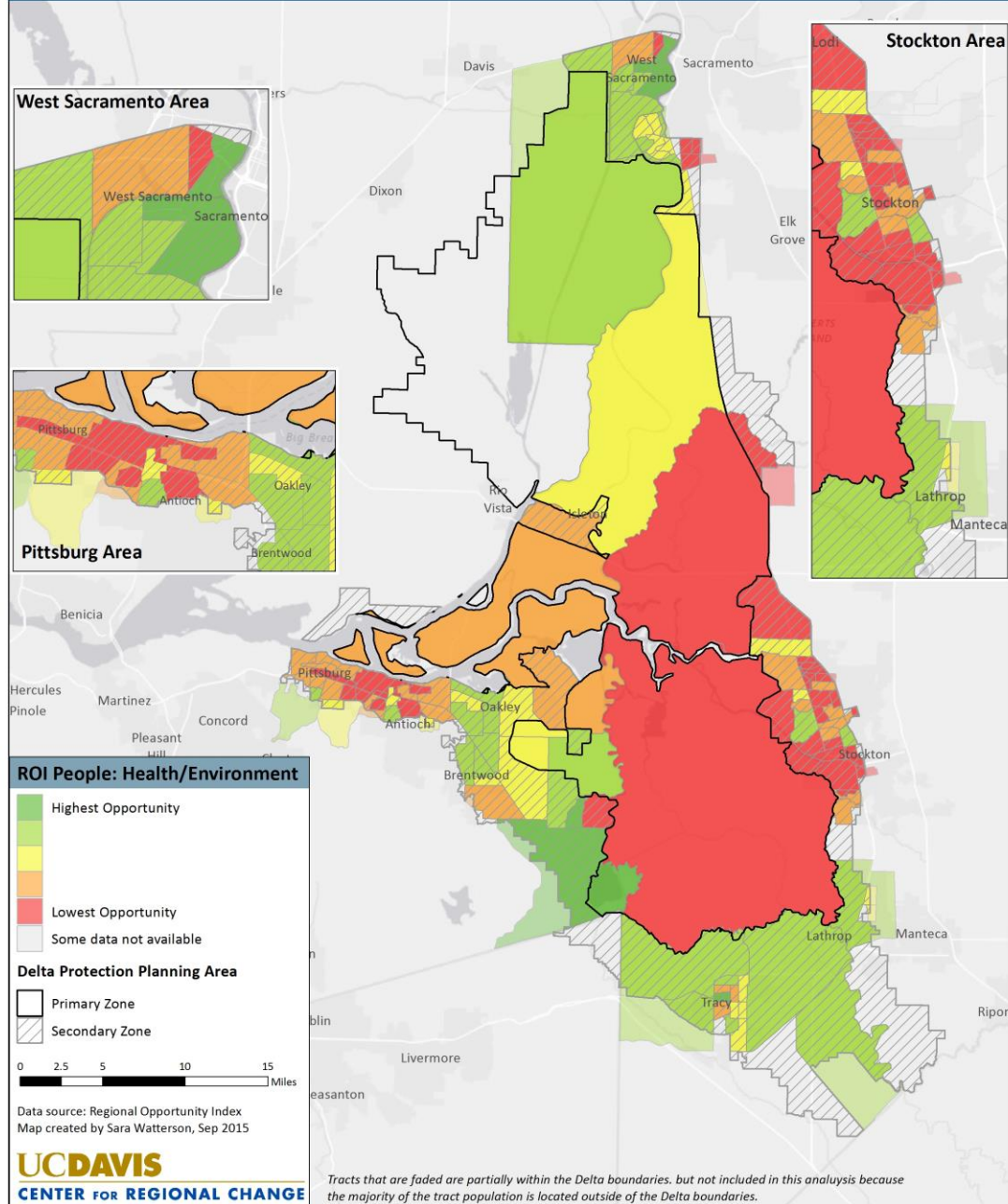
Health/Environment-People: Births to Teens



Health/Environment-People: Years of Potential Life Lost



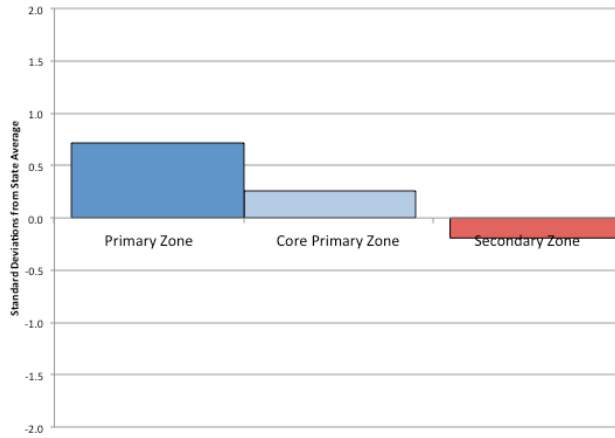
Opportunity in the California Delta Regional Opportunity Index



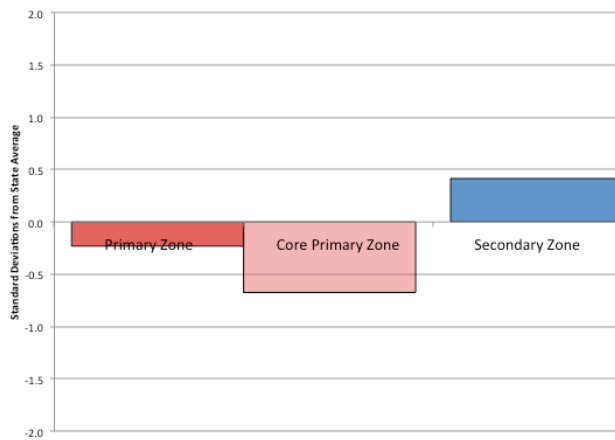
People: Civic Life



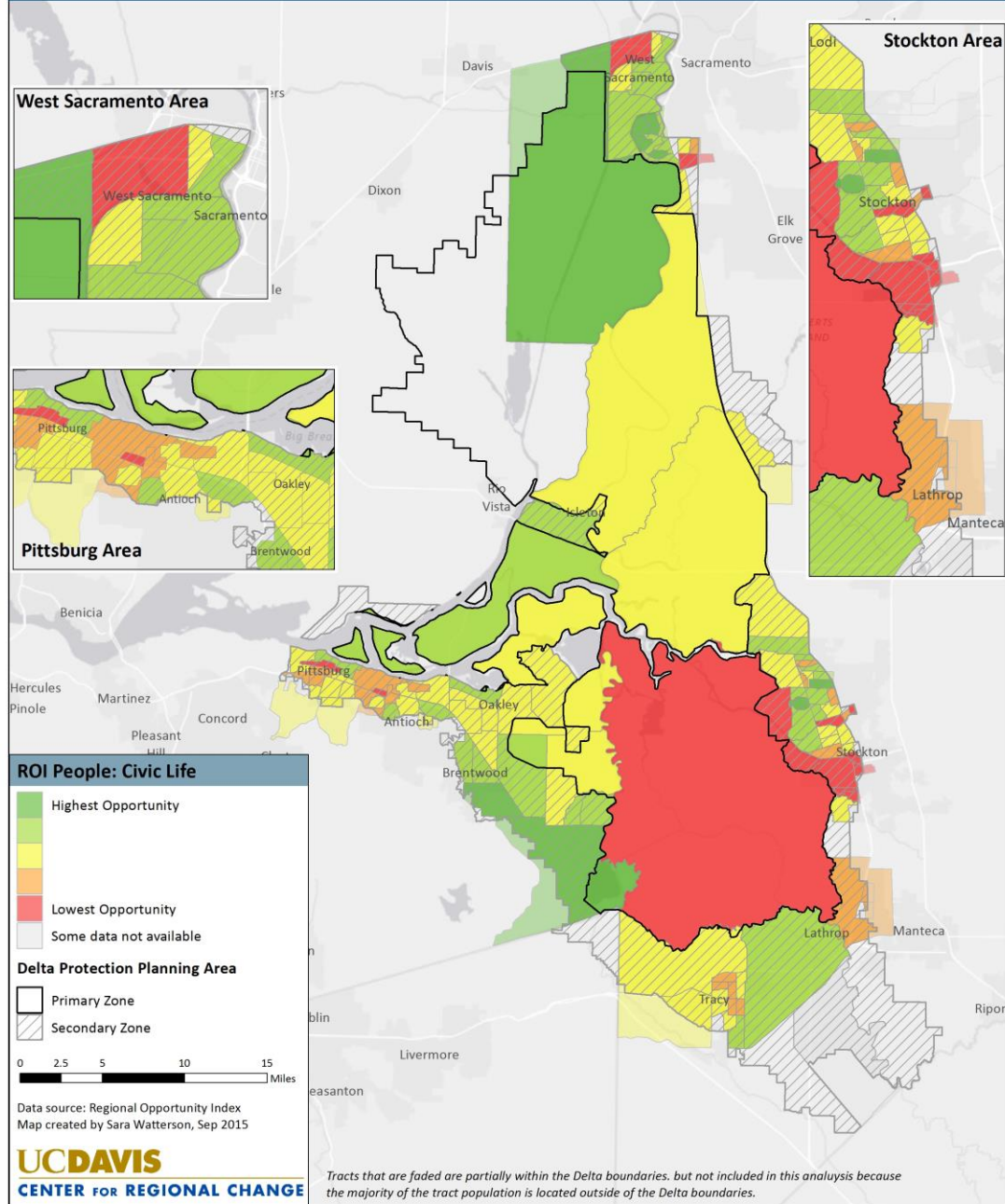
Civic Life-People: Voting Rate



Civic Life-People: English Speakers



Opportunity in the California Delta Regional Opportunity Index





UC DAVIS
CENTER FOR REGIONAL CHANGE