

# Hispanics & the changing face of the Sacramento Region ...and beyond

Michael Rios, PhD  
Dept. of Environmental Design  
UC Davis

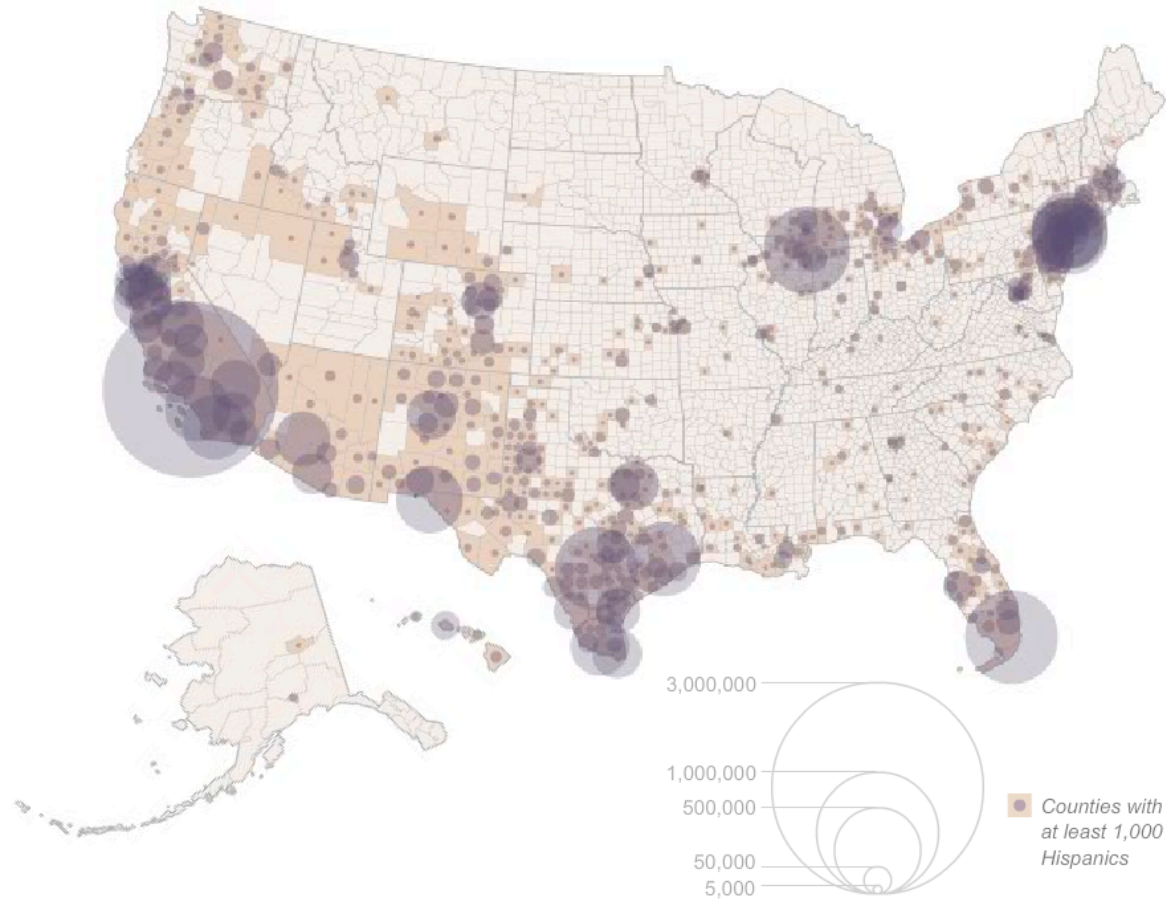


# The Nation



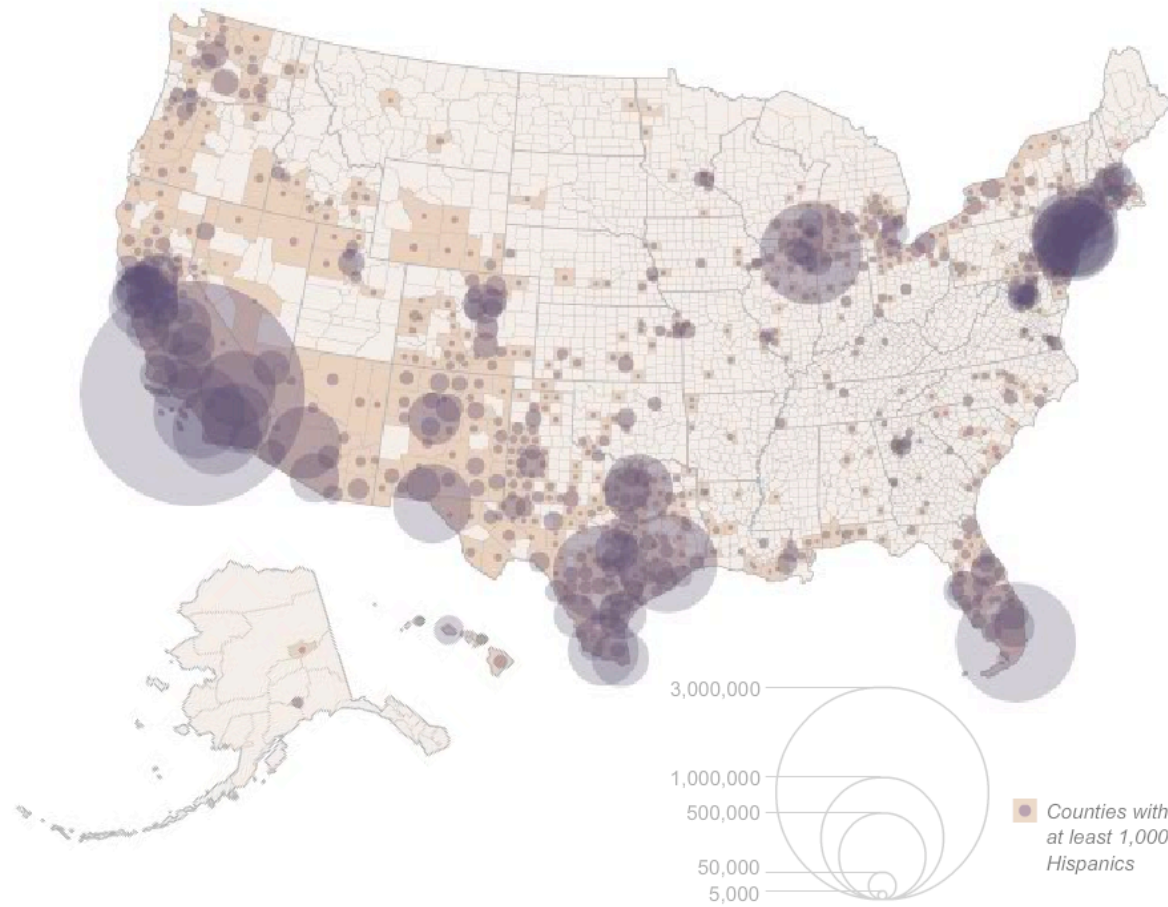


# U.S. Hispanic Population by County 1980



Source: Pew Hispanic Center

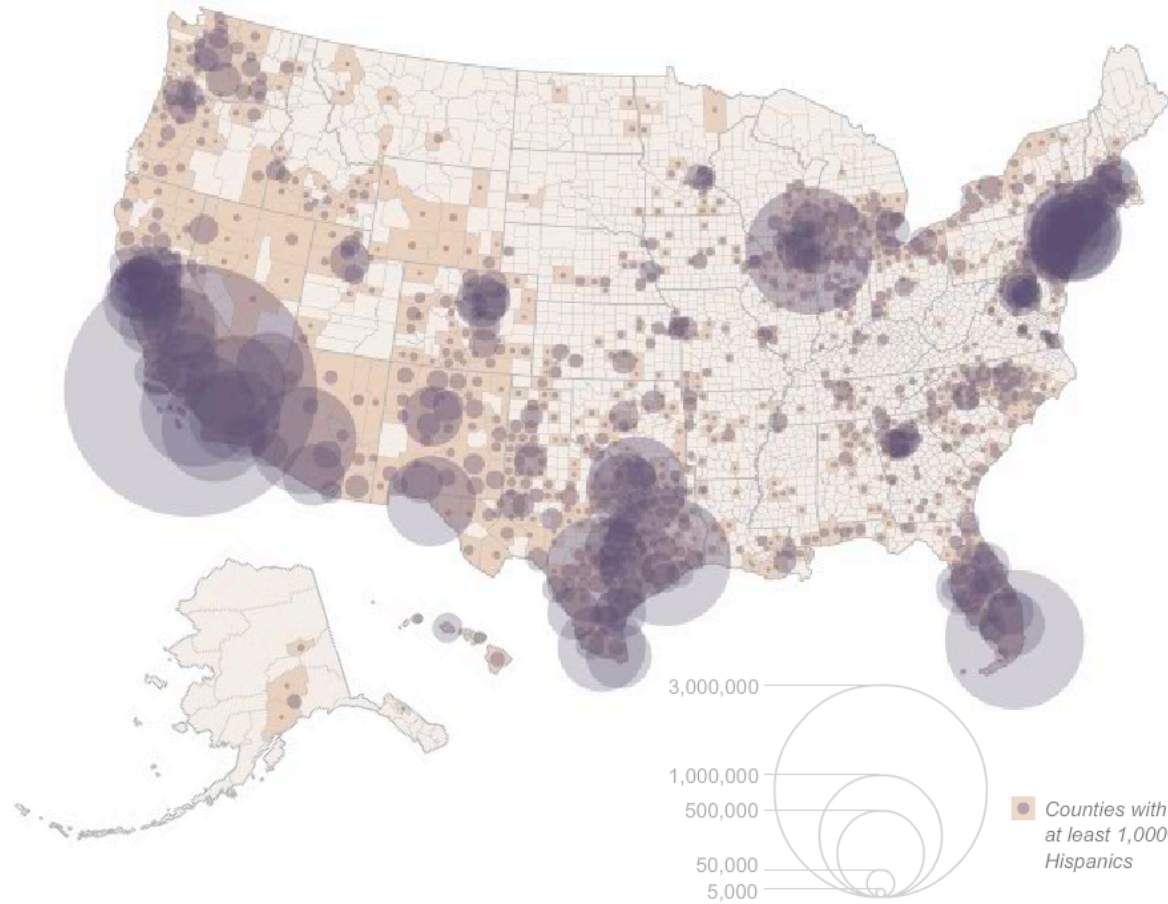
# U.S. Hispanic Population by County 1990



Source: Pew Hispanic Center

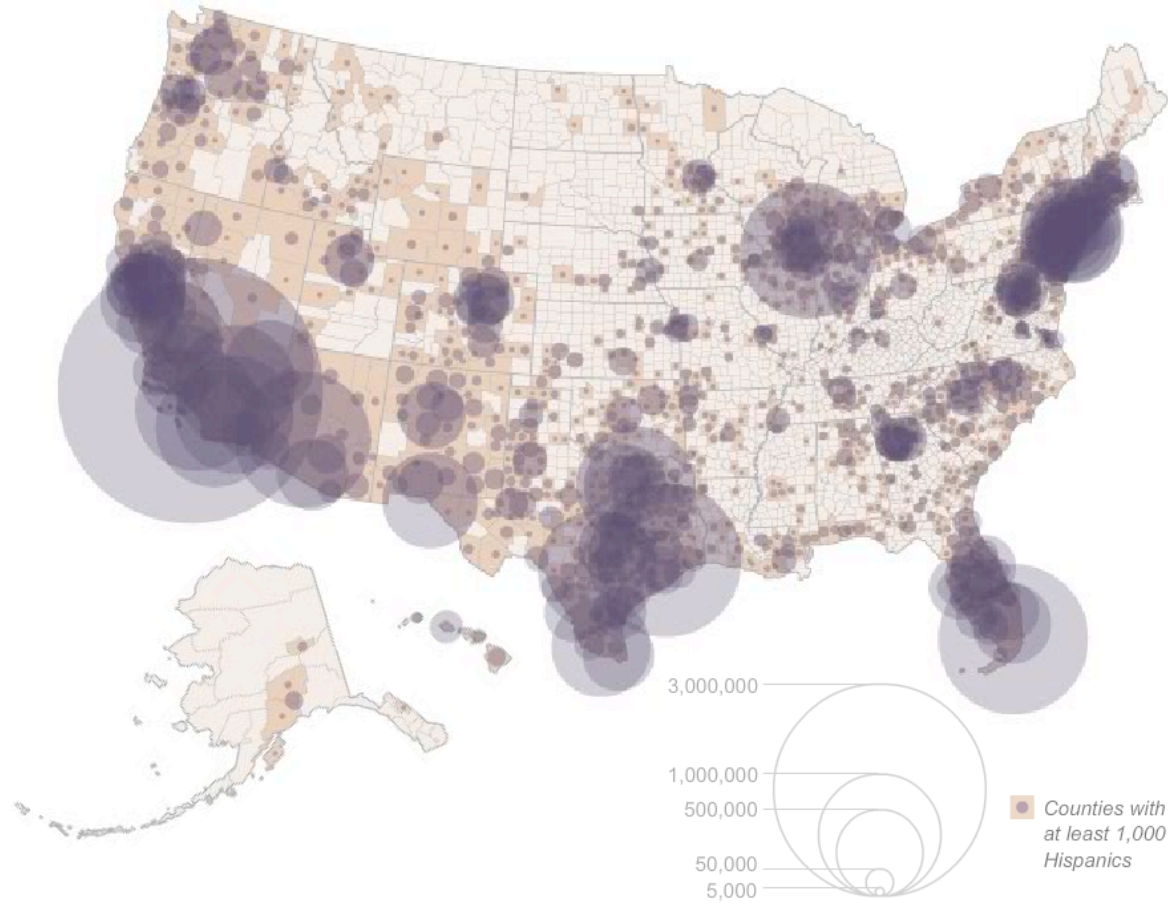


# U.S. Hispanic Population by County 2000



Source: Pew Hispanic Center

# U.S. Hispanic Population by County 2008



Source: Pew Hispanic Center





# The Nation

## Population

- 33% increase in Hispanic population from 2000 (35.2 million) to 2008 (46.8 million)
- The median age for Hispanics was 27
- 22% of all children under 18 were Hispanic
- 52% of 16 million Hispanic children were second generation

Sources: US Census Bureau, Pew Hispanic Center





# The Nation

## Income & Education

- Median household income for Hispanics was \$28,820 in 2008
- Over 46% of Hispanics owned homes in 2008 compared to over 68% of total population
- 31.7% without health insurance
- 44.5% of Hispanics have graduated high school (2007)
- 7.6% of Hispanics have graduated from college (2007)





# The Nation

## Hispanic Market

- Hispanic purchasing power accounted for over \$863 billion in 2007 and estimated to reach \$1.2 trillion by 2011
- Hispanics under 44 accounted for \$295 billion
- Rate of market growth is nearly three times the national rate over the past decade
- Hispanic-owned firms grew by 31% between 1997 and 2002

Sources: Selig Center for Economic Growth, The Conference Board Research Center, US Bureau of Economic Analysis, US Census Bureau





The Nation

14% Hispanics in 2005

24.5% by 2050



# The State of California





# The State of California

## Population

- 21% increase in Hispanic population from 2000 to 2007
- In 2008, the Median age for Hispanics was 27
- In 2008, 13.4 million Hispanics comprised over a third of the state's population (37%) and are projected to triple to over 31 million, or 52%, by 2050
- Hispanics will account for 65.7% of population growth from 2000 to 2020
- In 2008, Hispanics represent 53.7% of the foreign born in California



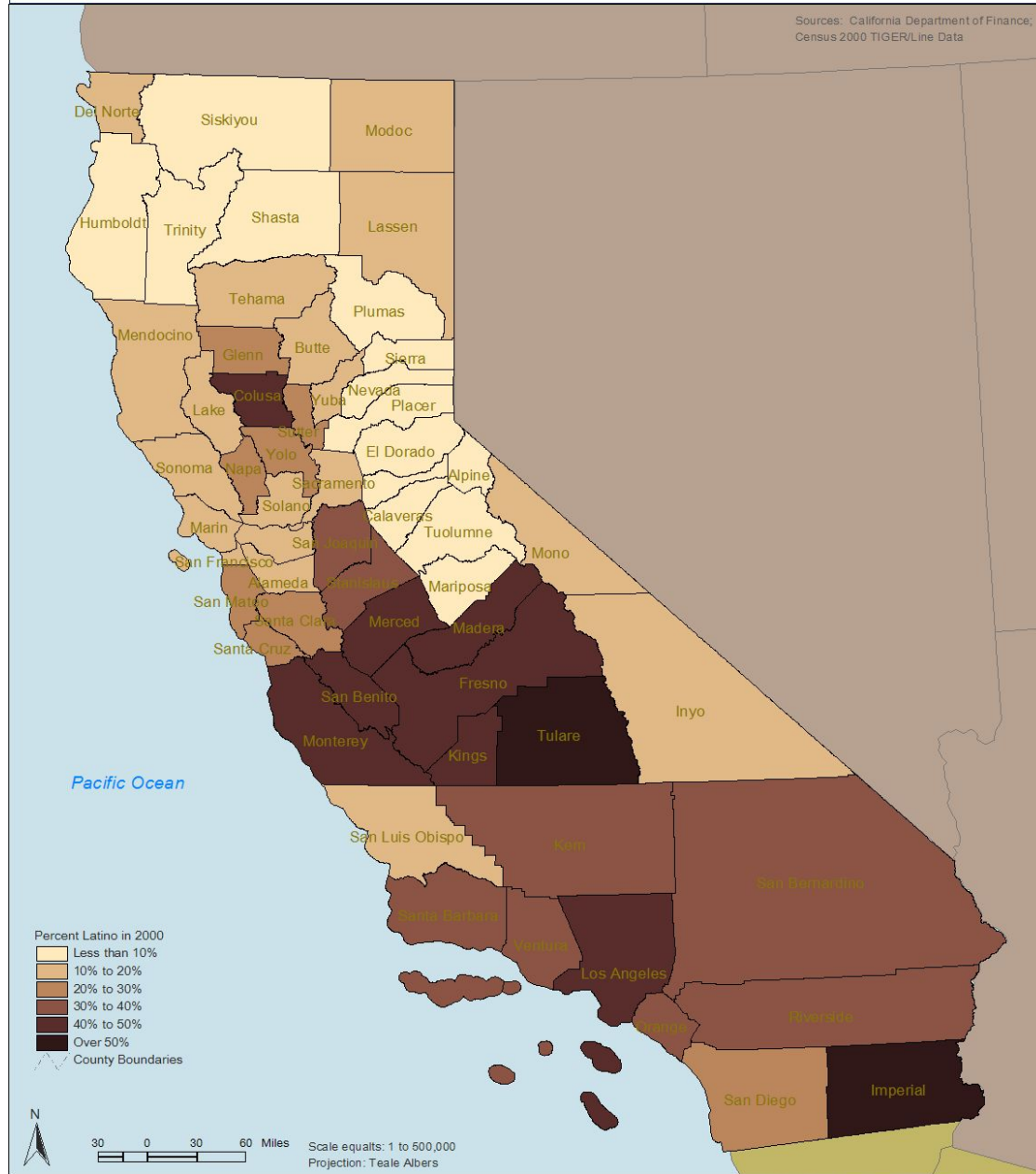
# The State of California

## Income & Education (2008)

- Median household income was \$22,405 (compared to \$30,552 for total population)
- 46% of owned homes (compared to 57% of total population)
- 29% without health insurance compared to 18% of total population
- Hispanics comprised 48% of all K-12 students
- 60.3% of Hispanics graduated from high school from 2006-2007

# PERCENT LATINO POPULATION IN 2000 by California Counties

Sources: California Department of Finance;  
Census 2000 TIGER/Line Data



Program for Environmental & Regional Equity (PERE)  
USC Center for Sustainable Cities

D:\data\GIS\CA\california\_demo\_projections\_01.apr  
Field: p\_lat\_00  
View: California-Teale Albers,  
Layout: California - P\_Lat\_00



# FORECASTED PERCENT LATINO POPULATION IN 2010 by California Counties

Sources: California Department of Finance;  
Census 2000 TIGER/Line Data



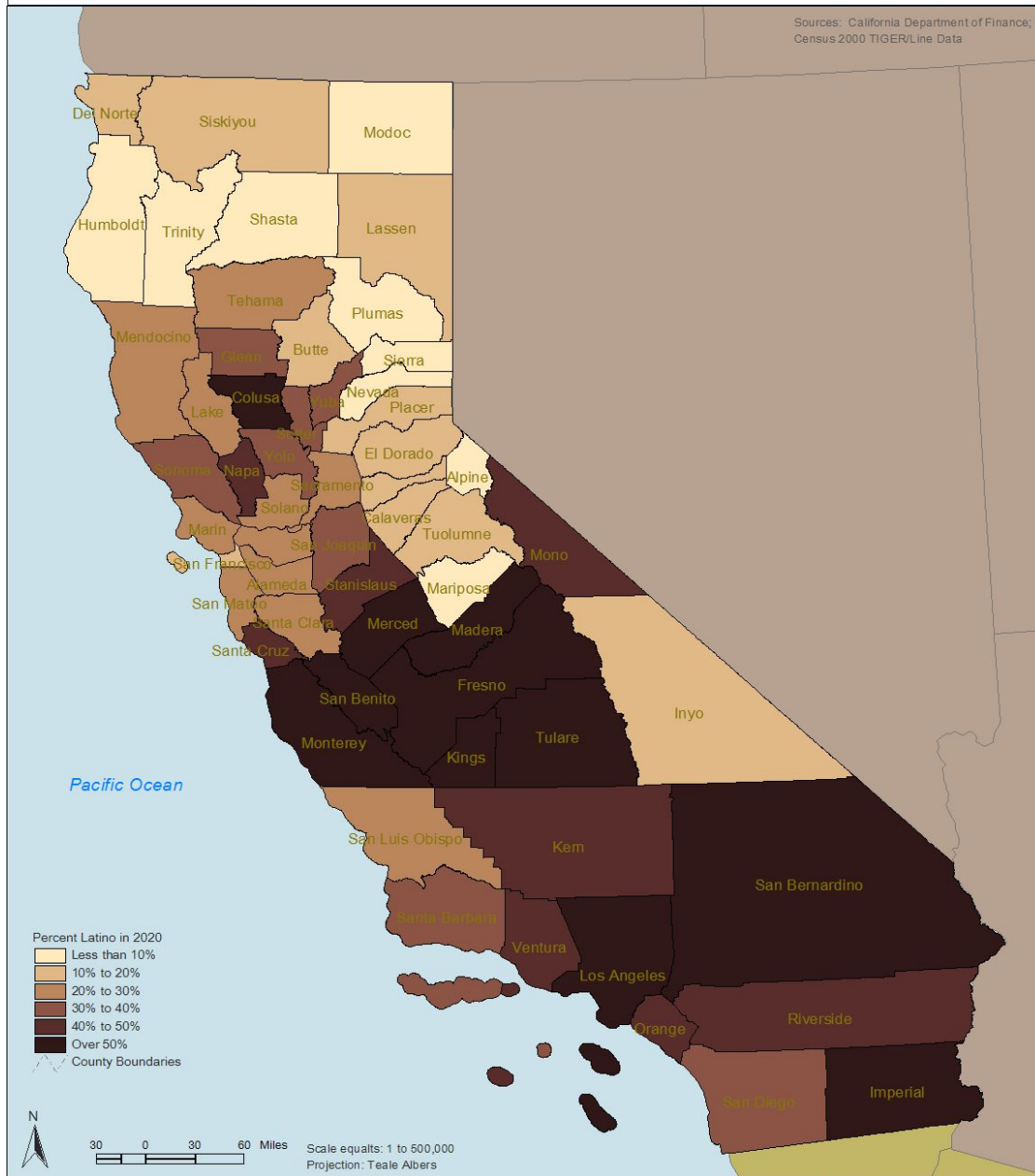
Program for Environmental & Regional Equity (PERE)  
 USC Center for Sustainable Cities

D:\data\GIS\California\_demo\_projections\_01.apr  
 Field: p\_lat\_10  
 View: California-Teale Albers,  
 Layout: California - Teale Albers - P\_Lat\_10



# FORECASTED PERCENT LATINO POPULATION IN 2020 by California Counties

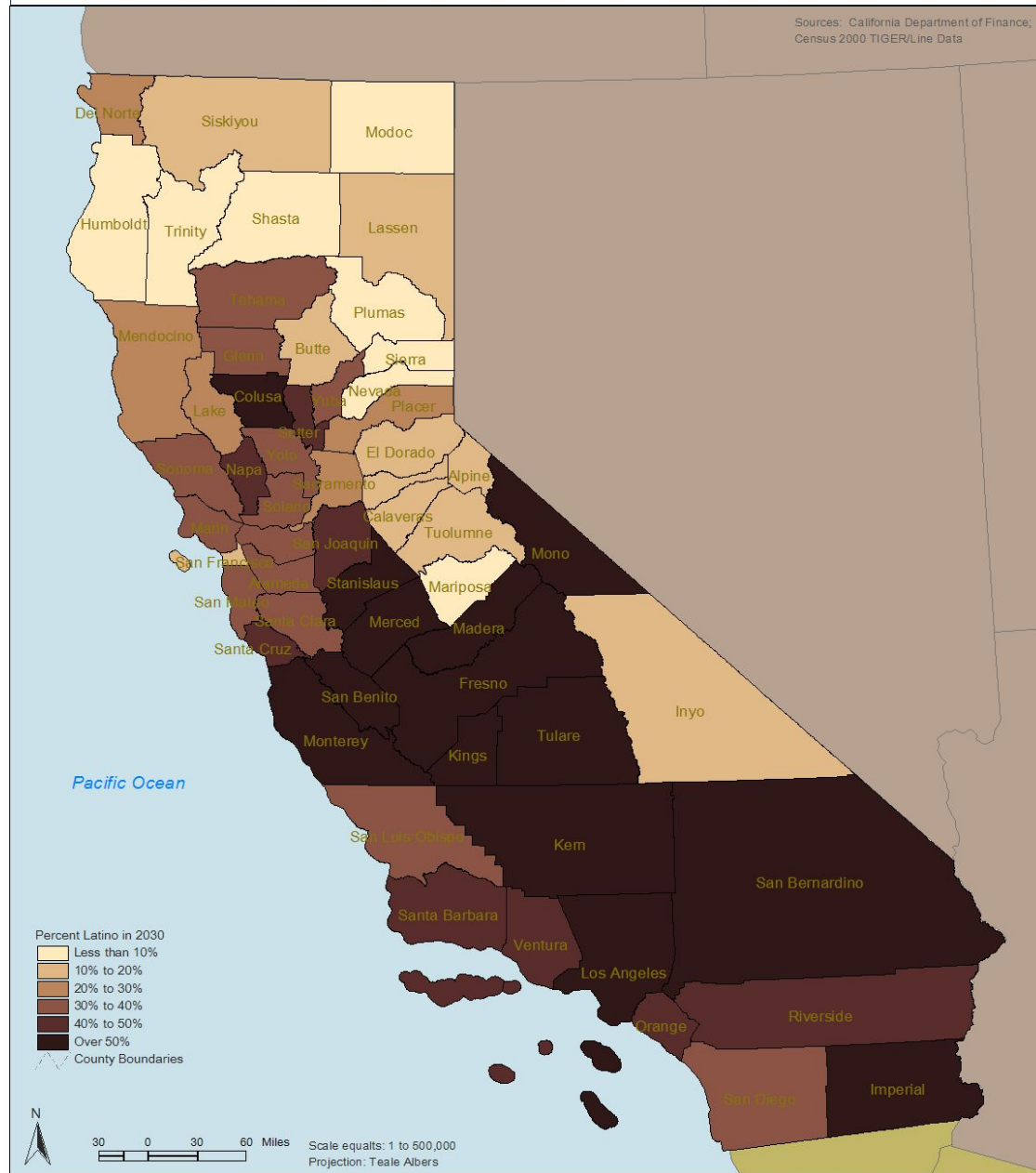
Sources: California Department of Finance;  
Census 2000 TIGER/Line Data





# FORECASTED PERCENT LATINO POPULATION IN 2030 by California Counties

Sources: California Department of Finance;  
Census 2000 TIGER/Line Data



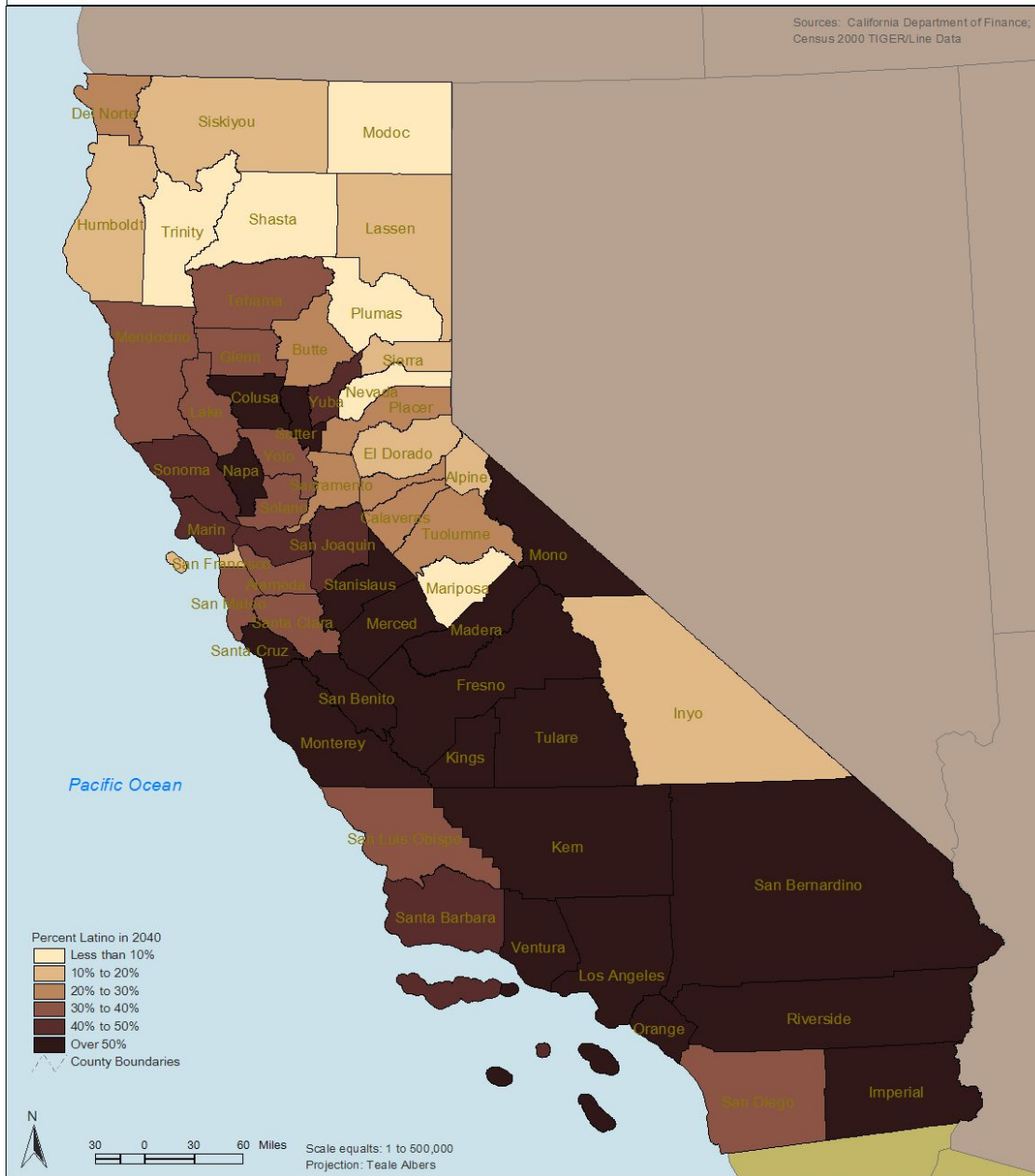
Program for Environmental & Regional Equity (PERE)  
USC Center for Sustainable Cities

D:\data\GIS\CA\california\_demo\_projections\_01.apr  
Field: p\_lat\_30  
View: California-Teale Albers,  
Layout: California - Teale Albers - P\_Lat\_30



# FORECASTED PERCENT LATINO POPULATION IN 2040 by California Counties

Sources: California Department of Finance;  
Census 2000 TIGER/Line Data



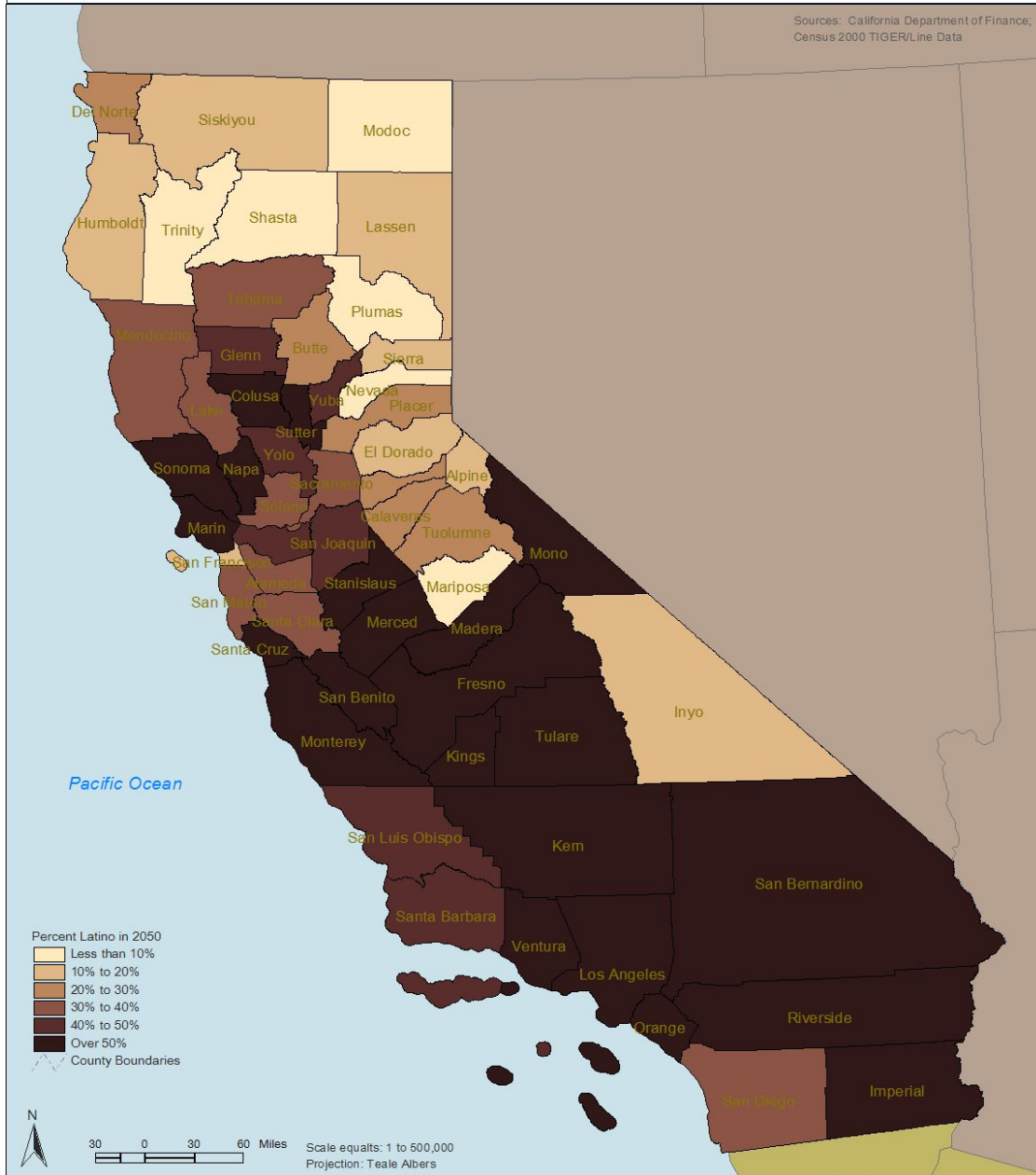
Program for Environmental & Regional Equity (PERE)  
USC Center for Sustainable Cities

D:\data\GIS\CA\california\_demo\_projections\_01.apr  
Field: p\_lat\_40  
View: California-Teale Albers,  
Layout: California - Teale Albers - P\_Lat\_40



# FORECASTED PERCENT LATINO POPULATION IN 2050 by California Counties

Sources: California Department of Finance;  
Census 2000 TIGER/Line Data



Program for Environmental & Regional Equity (PERE)  
USC Center for Sustainable Cities

D:\data\GIS\CA\california\_demo\_projections\_01.apr  
Field: p\_lat\_50  
View: California-Teale Albers,  
Layout: California - Teale Albers - P\_Lat\_50

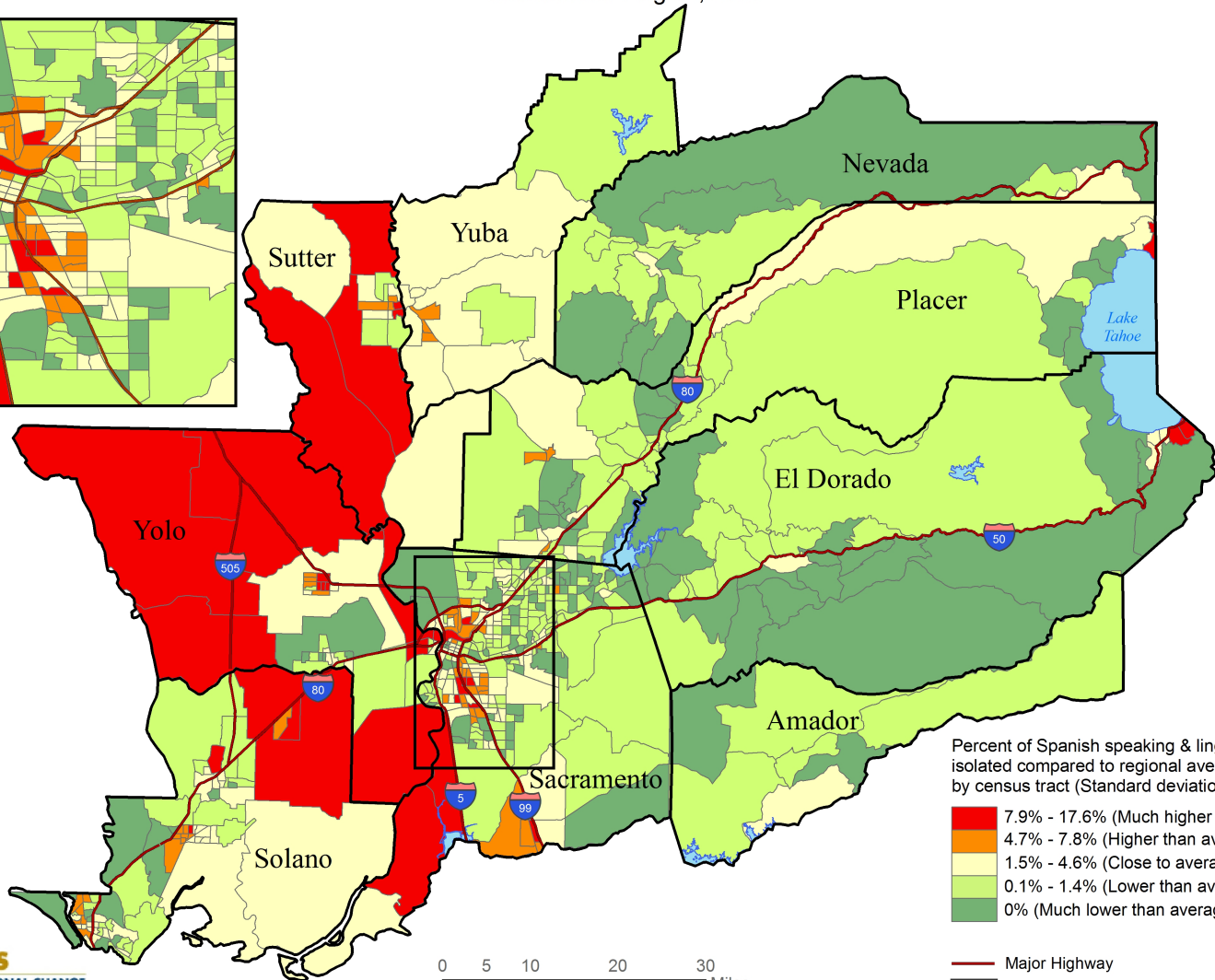
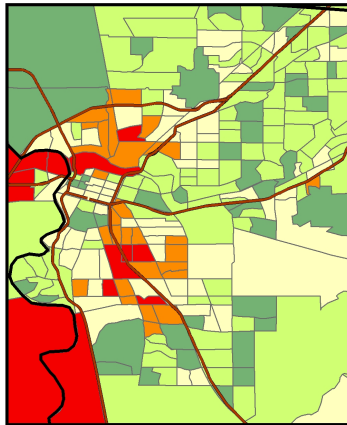


# The Sacramento Region



Image Source: YAMEAN Project

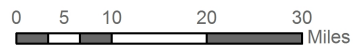
# Percent of All Households that are Spanish Speaking and Linguistically Isolated Sacramento Region, 2000



Percent of Spanish speaking & linguistically isolated compared to regional average of 3.0% by census tract (Standard deviation is 3.2%)

- 7.9% - 17.6% (Much higher than average)
- 4.7% - 7.8% (Higher than average)
- 1.5% - 4.6% (Close to average)
- 0.1% - 1.4% (Lower than average)
- 0% (Much lower than average)

— Major Highway  
 □ County Boundary



**UC DAVIS**  
 CENTER FOR REGIONAL CHANGE

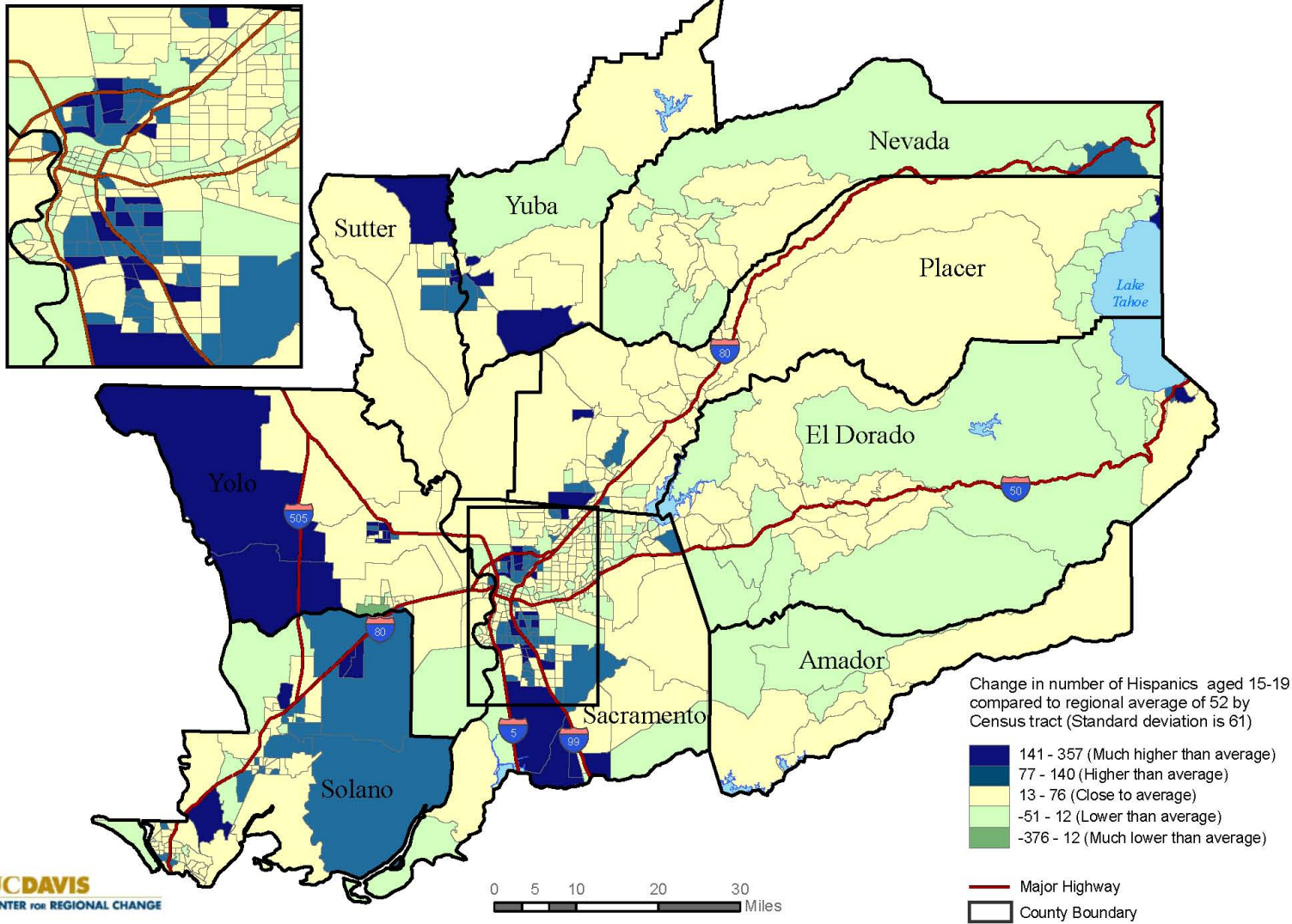
Healthy Youth / Healthy Regions

Data Source: U.S. Census, 2000

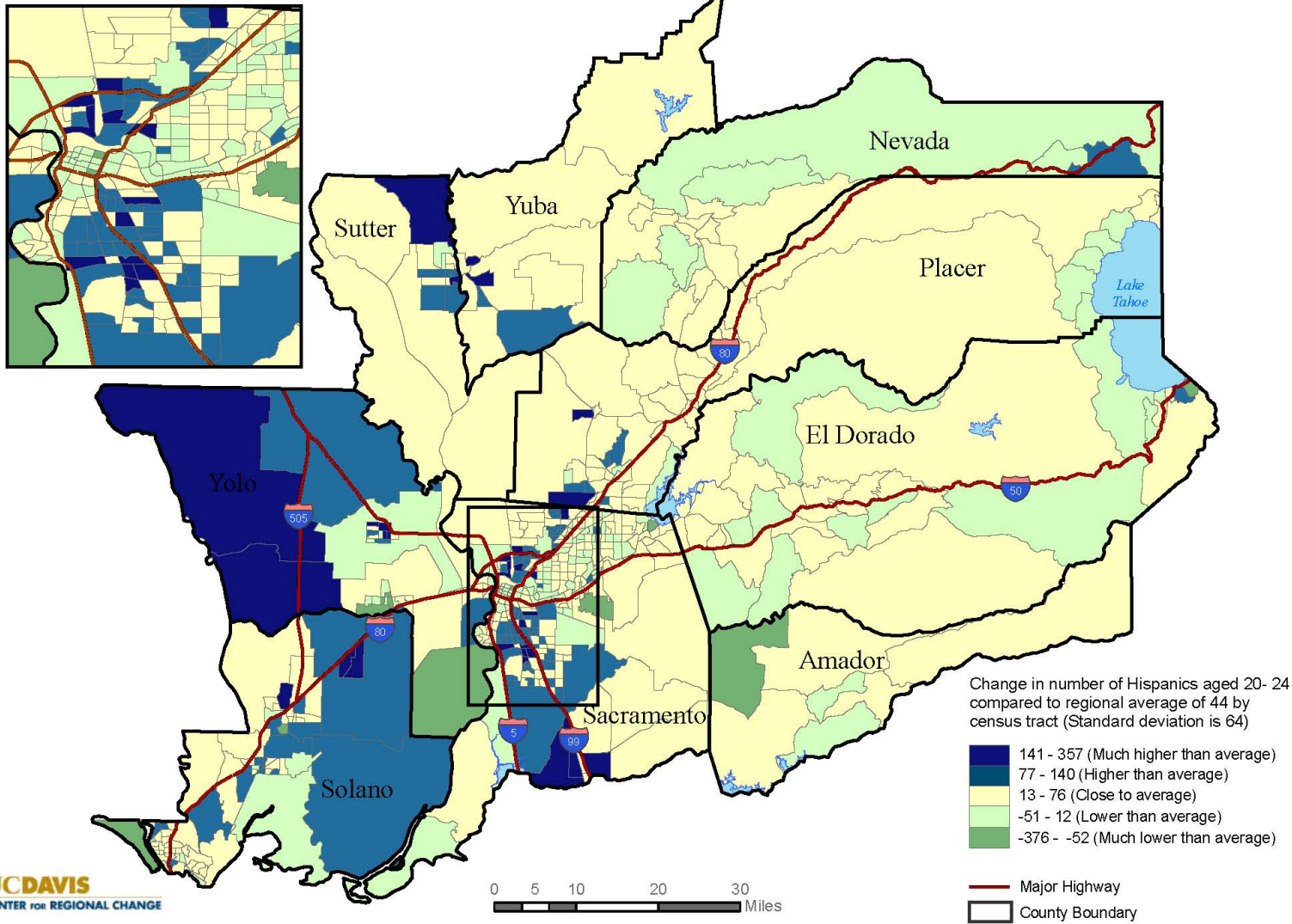
Map Created by Gideon Mazinga, February 2010



## Change in Total Hispanic Population Aged 15-19 Sacramento Region, 1990-2008



## Change in Total Hispanic Population Aged 20-24 Sacramento Region, 1990-2008



**UC DAVIS**  
 CENTER FOR REGIONAL CHANGE

Healthy Youth / Healthy Regions

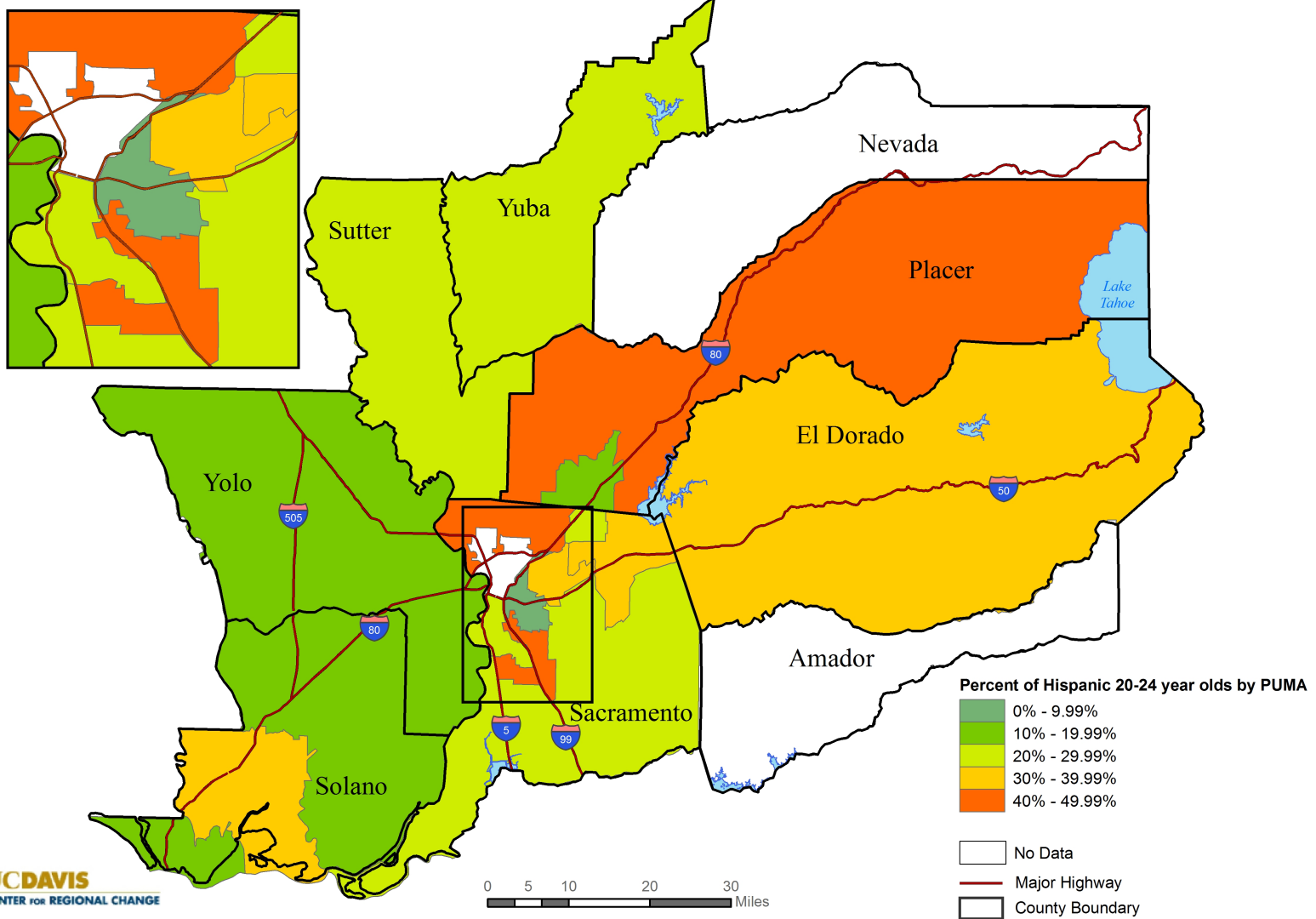


Data Source: U.S.Census, Geolytics 1990 & Geolytics Estimates 2008

Map Created by Gideon Mazinga, January 2010

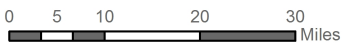


# Out of School and Out of Work Hispanic 20-24 year olds Sacramento Region, 2008



**UC DAVIS**  
CENTER FOR REGIONAL CHANGE

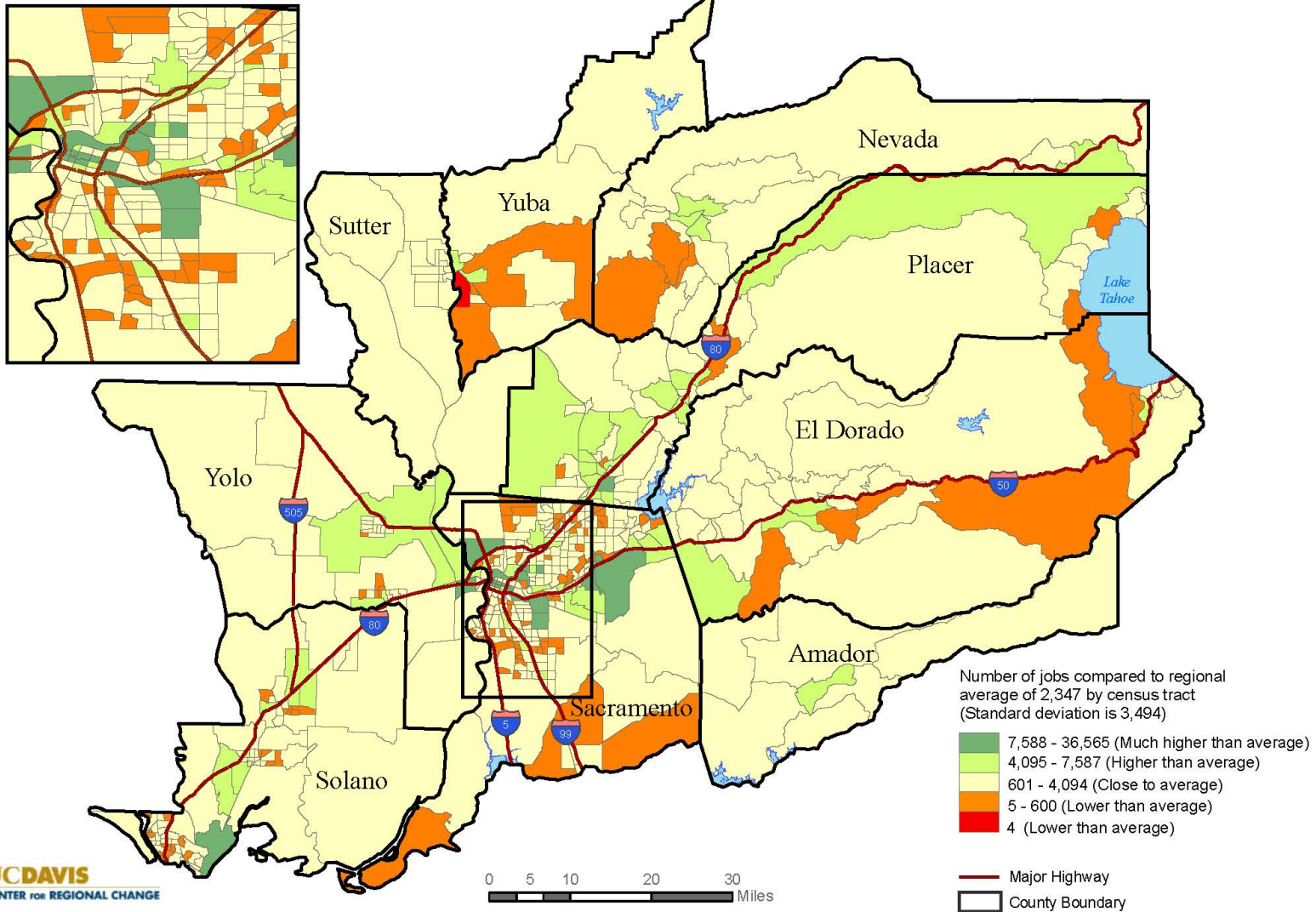
Healthy Youth / Healthy Regions



Data Source: ACS, 2008

Map Created by Gideon Mazinga, May 2010

## Number of Jobs Sacramento Region, 2008



**UC DAVIS**  
CENTER FOR REGIONAL CHANGE

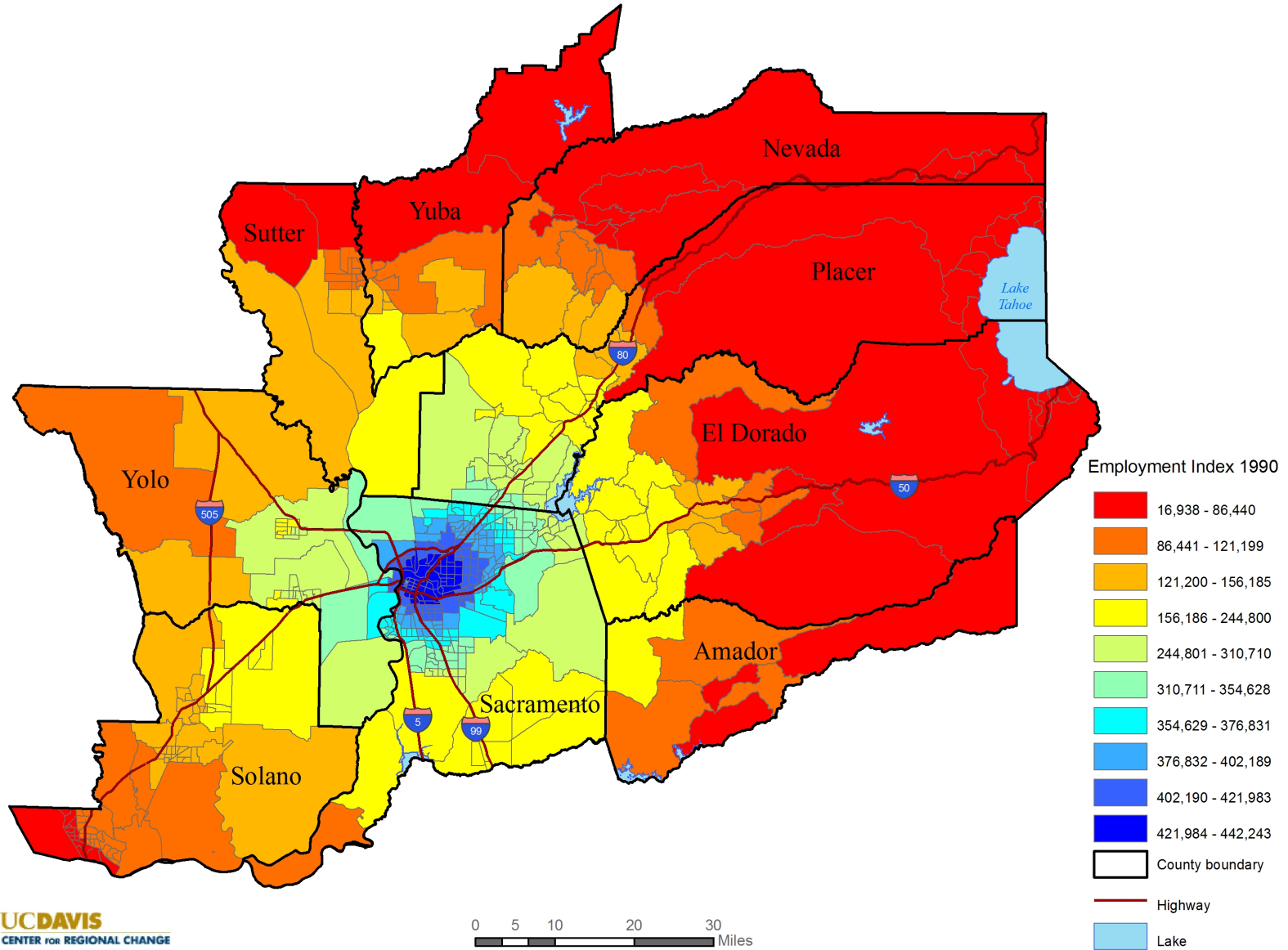
Healthy Youth / Healthy Regions

Data Source: National Establishment Time Series (NETS) 2008

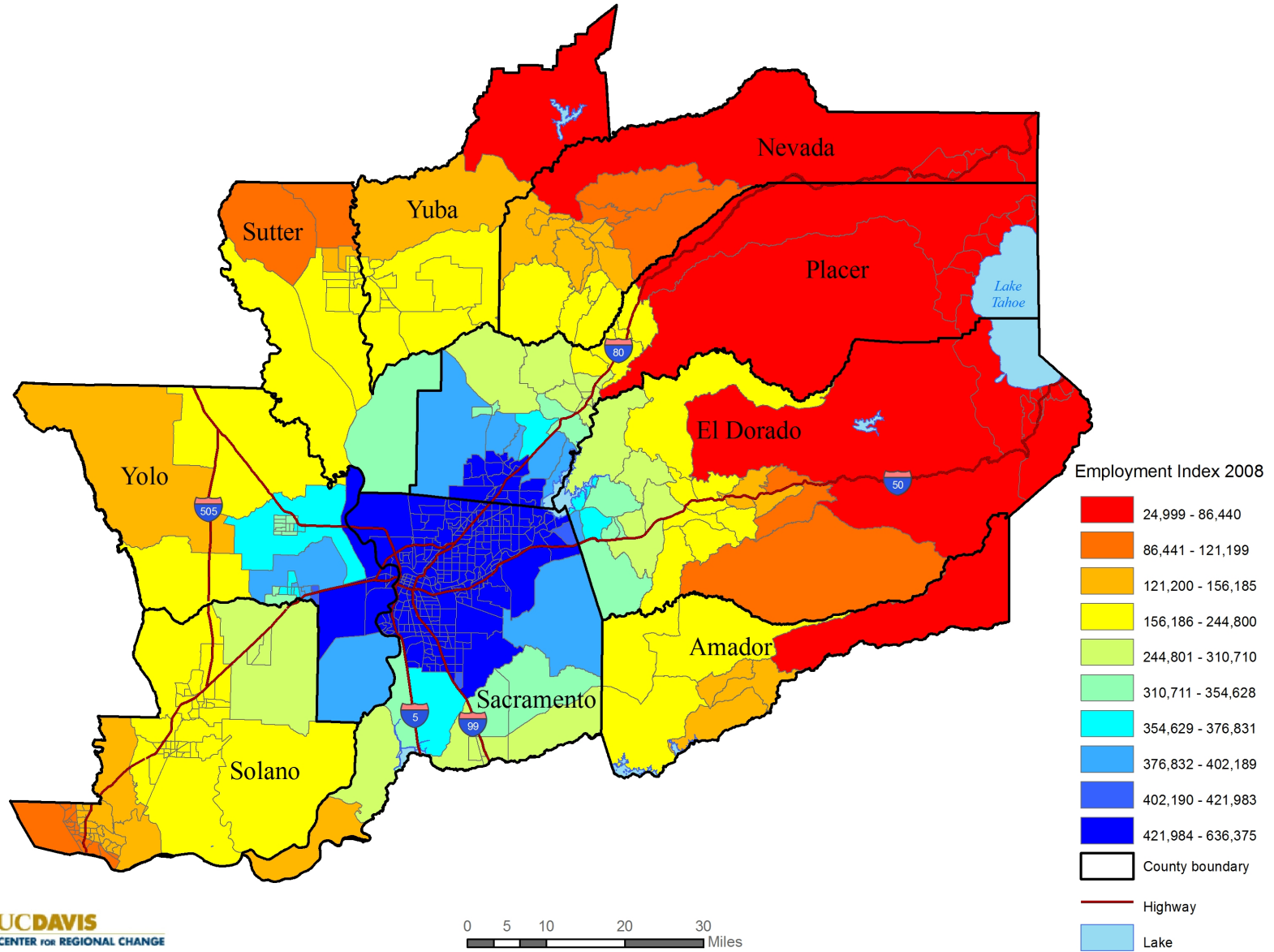
Map Created by Gideon Mazinga, April 2010



# Employment Index 1990



# Employment Index 2008



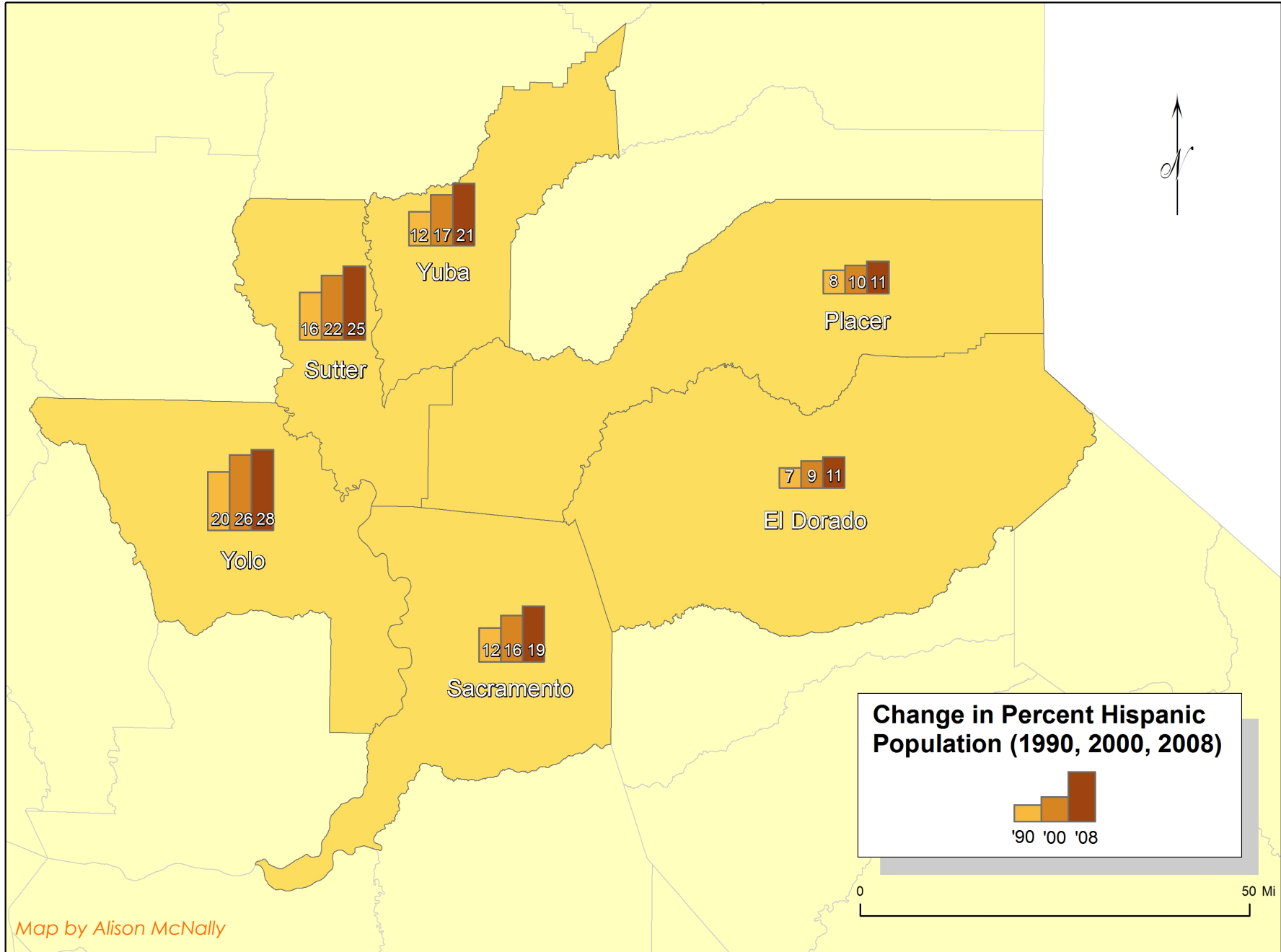


# The Sacramento Region

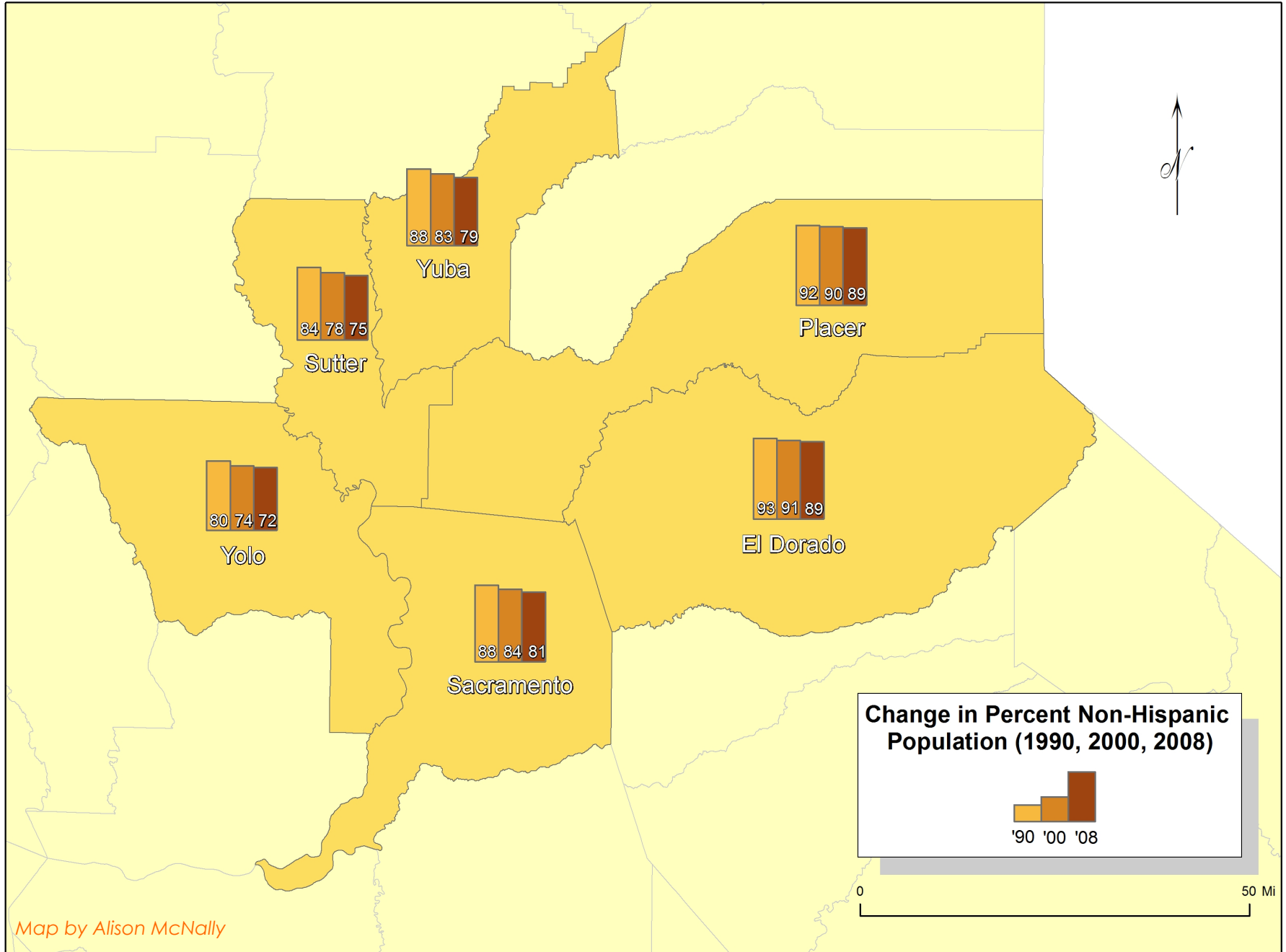
Population for six-county area<sup>1</sup>

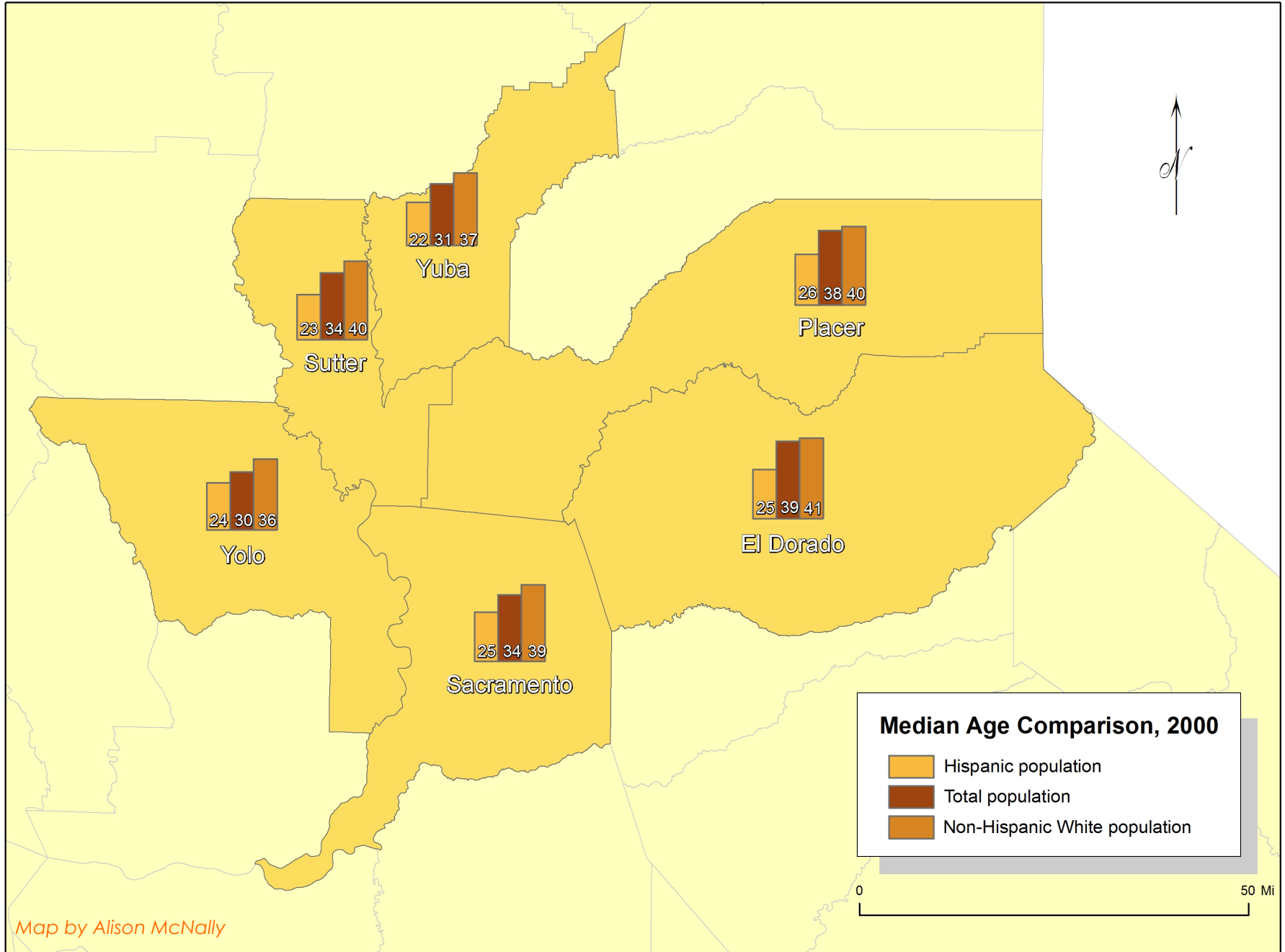
- 44% increase in Hispanic population from 2000 (306,161) to 2008 (441,441)
- 13% increase for non-Hispanic population from 2000 (1,629,840) to 2008 (1,833,665)

<sup>1</sup>Counties include El Dorado, Placer, Sacramento, Sutter, Yolo, and Yuba

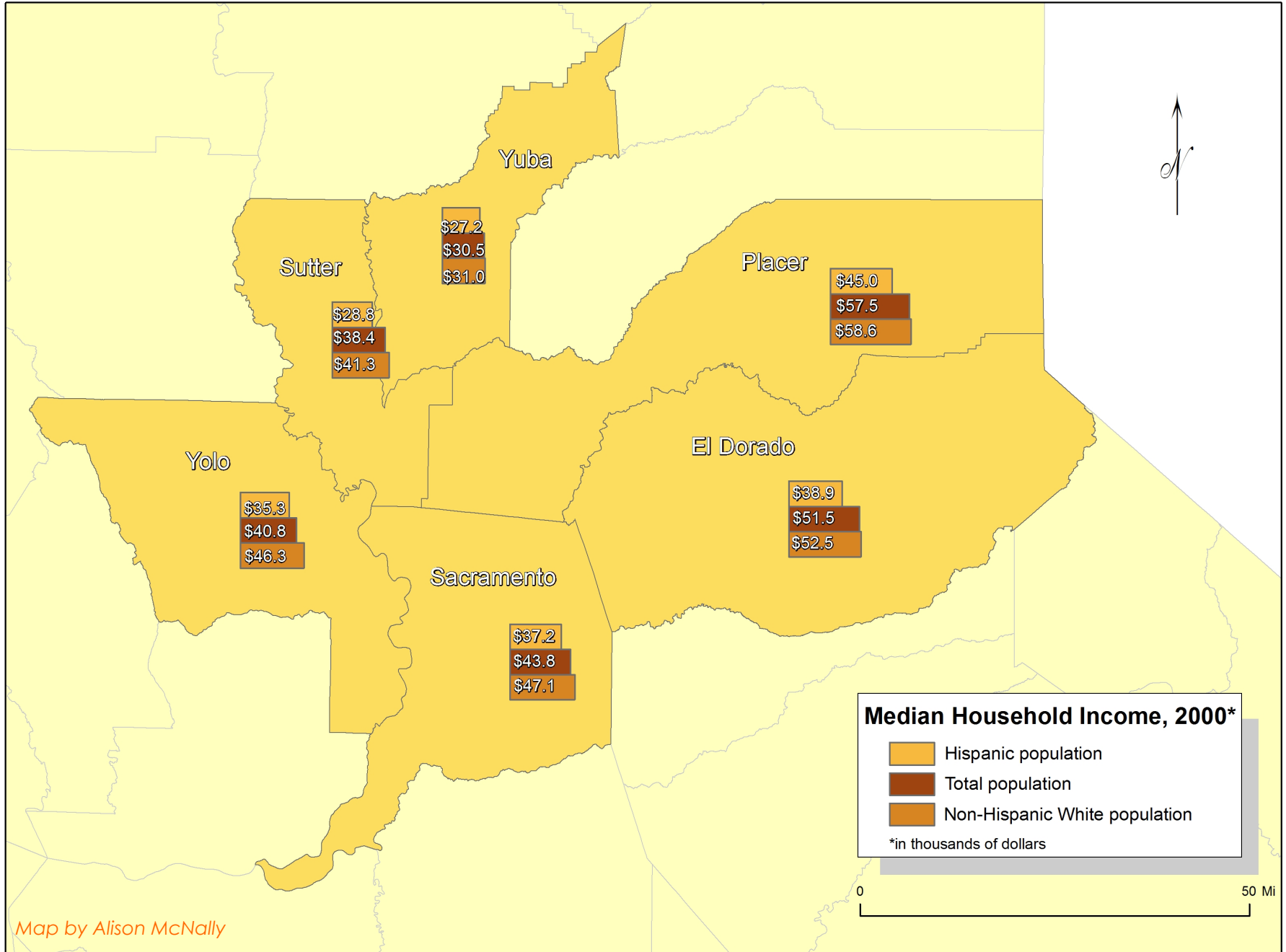




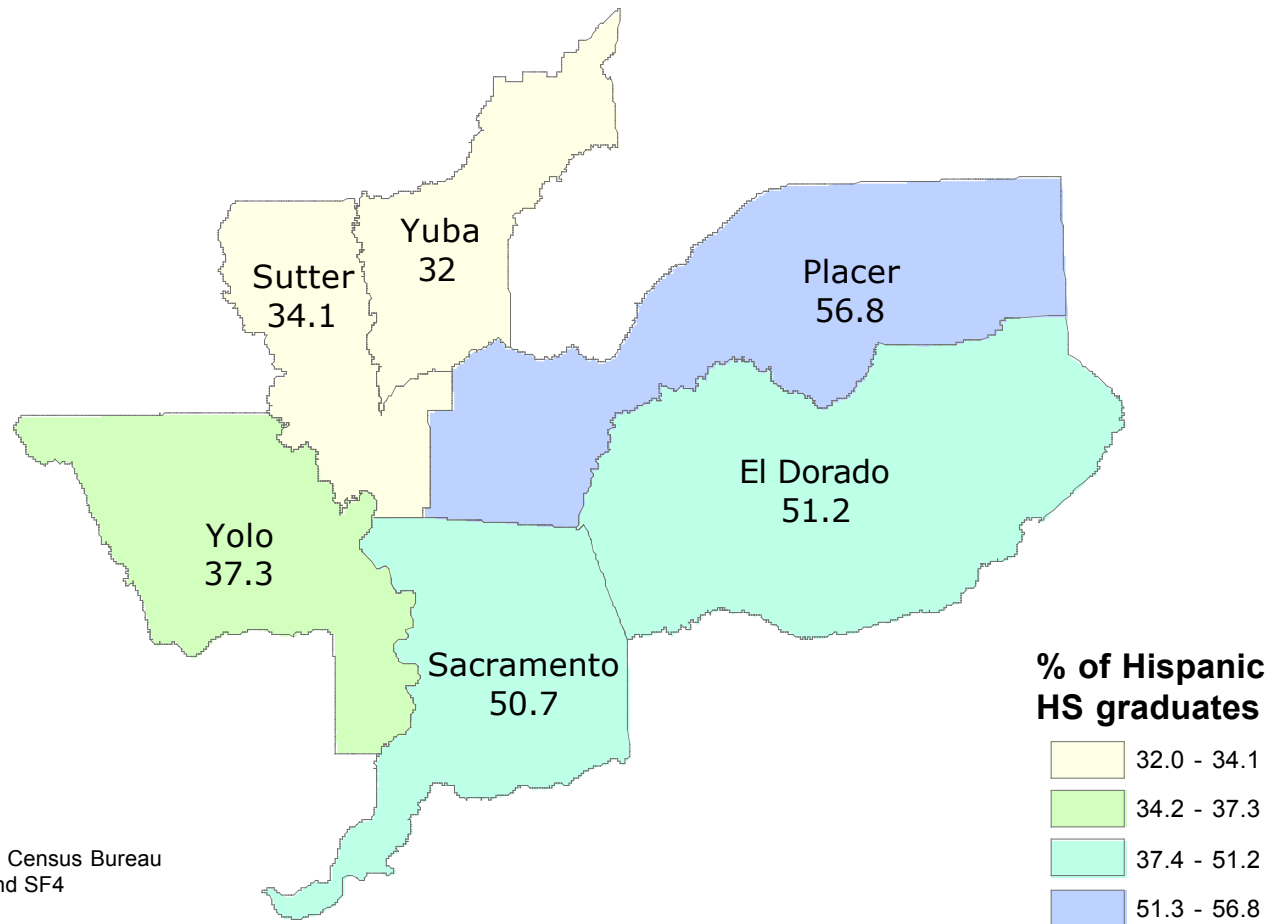








## Percent of Hispanics that are High School Graduates Compared to the Hispanic Population 18 Years and Over



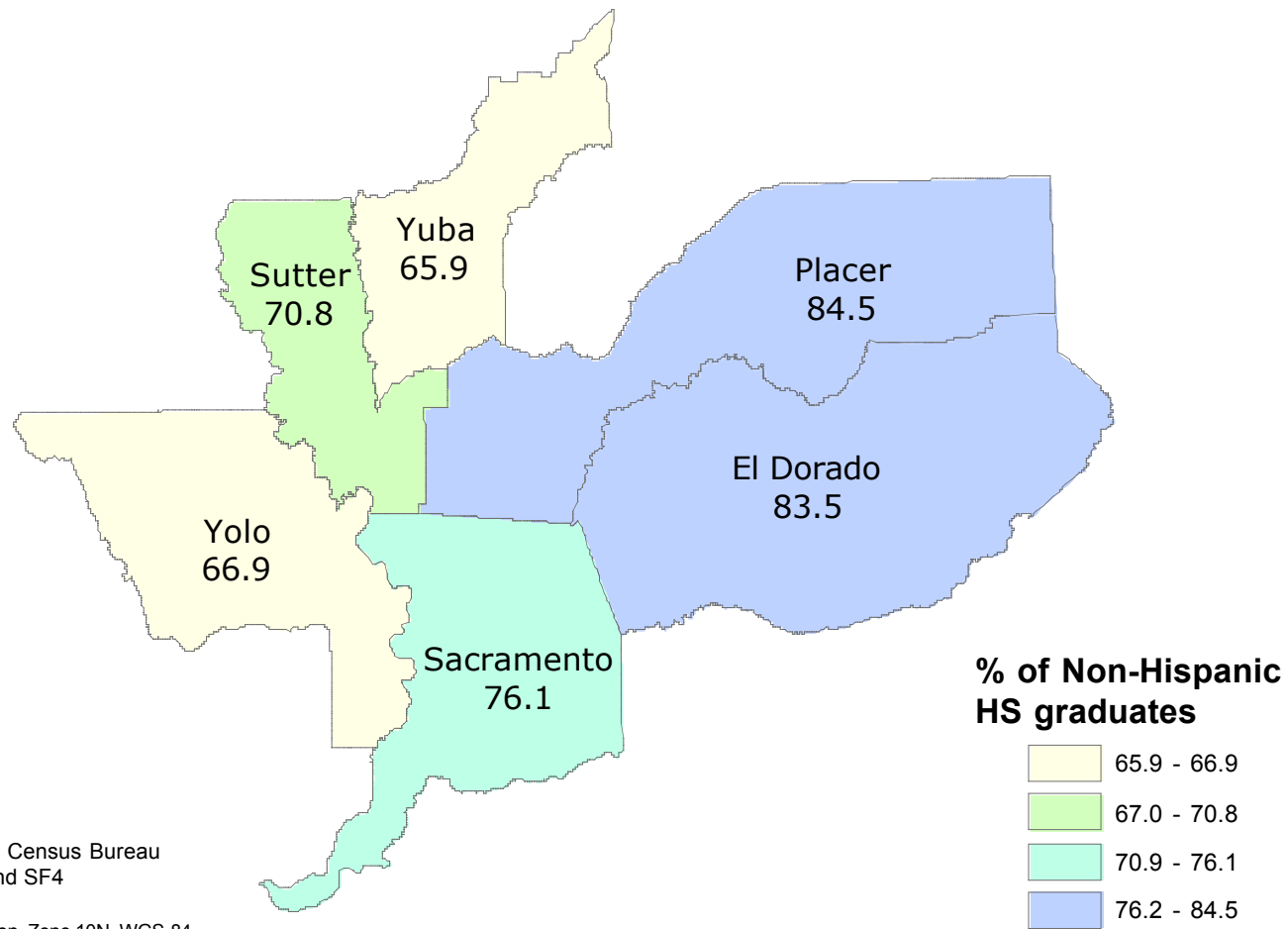
Source: U.S. Census Bureau  
2000, SF2 and SF4

UTM Projection, Zone 10N, WGS-84

Map by Julie Young, 8 June 2010



# Percent of Non-Hispanics that are High School Graduates Compared to the Non-Hispanic Population 18 Years and Over

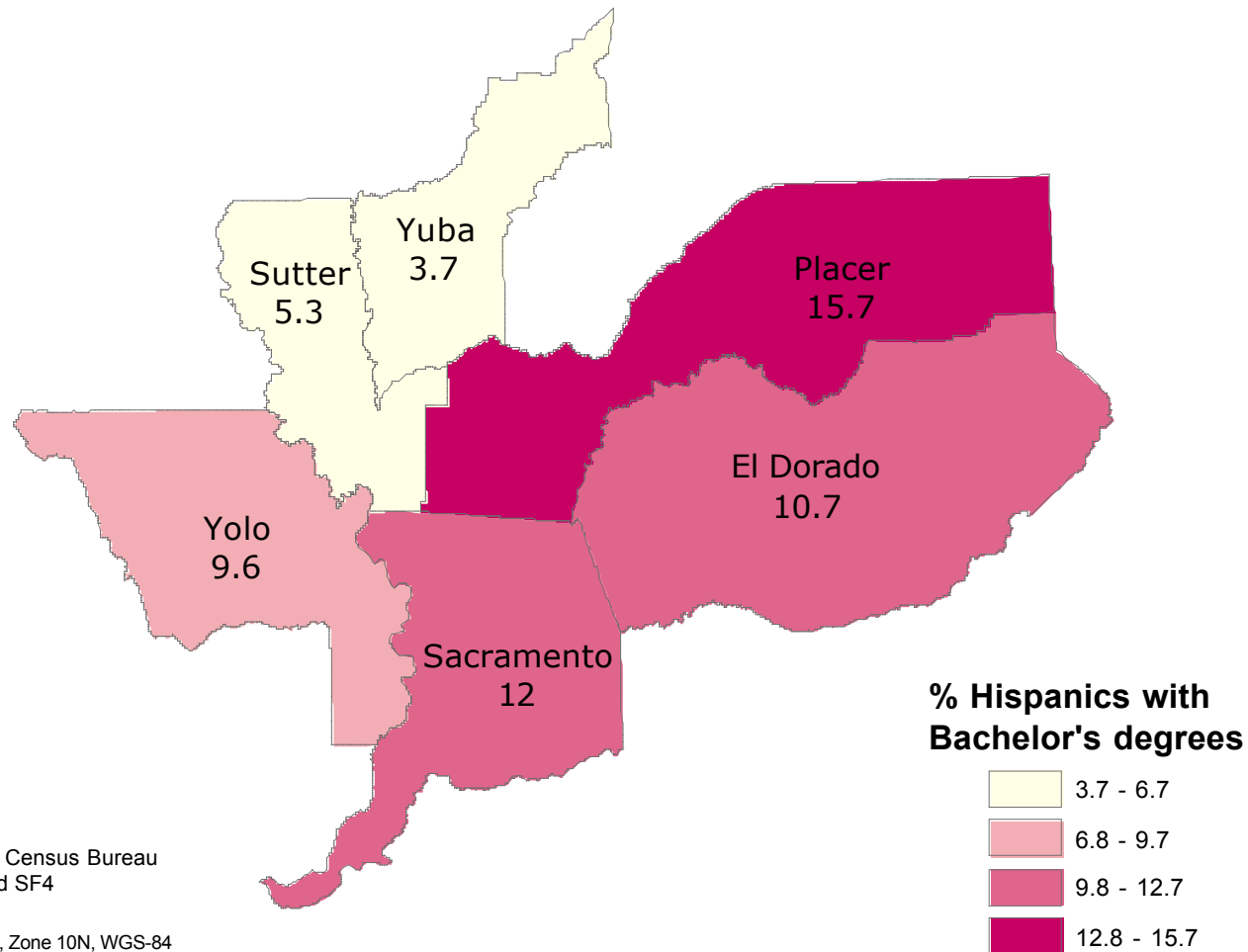


Source: U.S. Census Bureau  
2000, SF2 and SF4

UTM Projection, Zone 10N, WGS-84

Map by Julie Young, 8 June 2010

# Percent of Hispanics that have a Bachelor's Degree or Higher Compared to the Hispanic Population 25 years and over



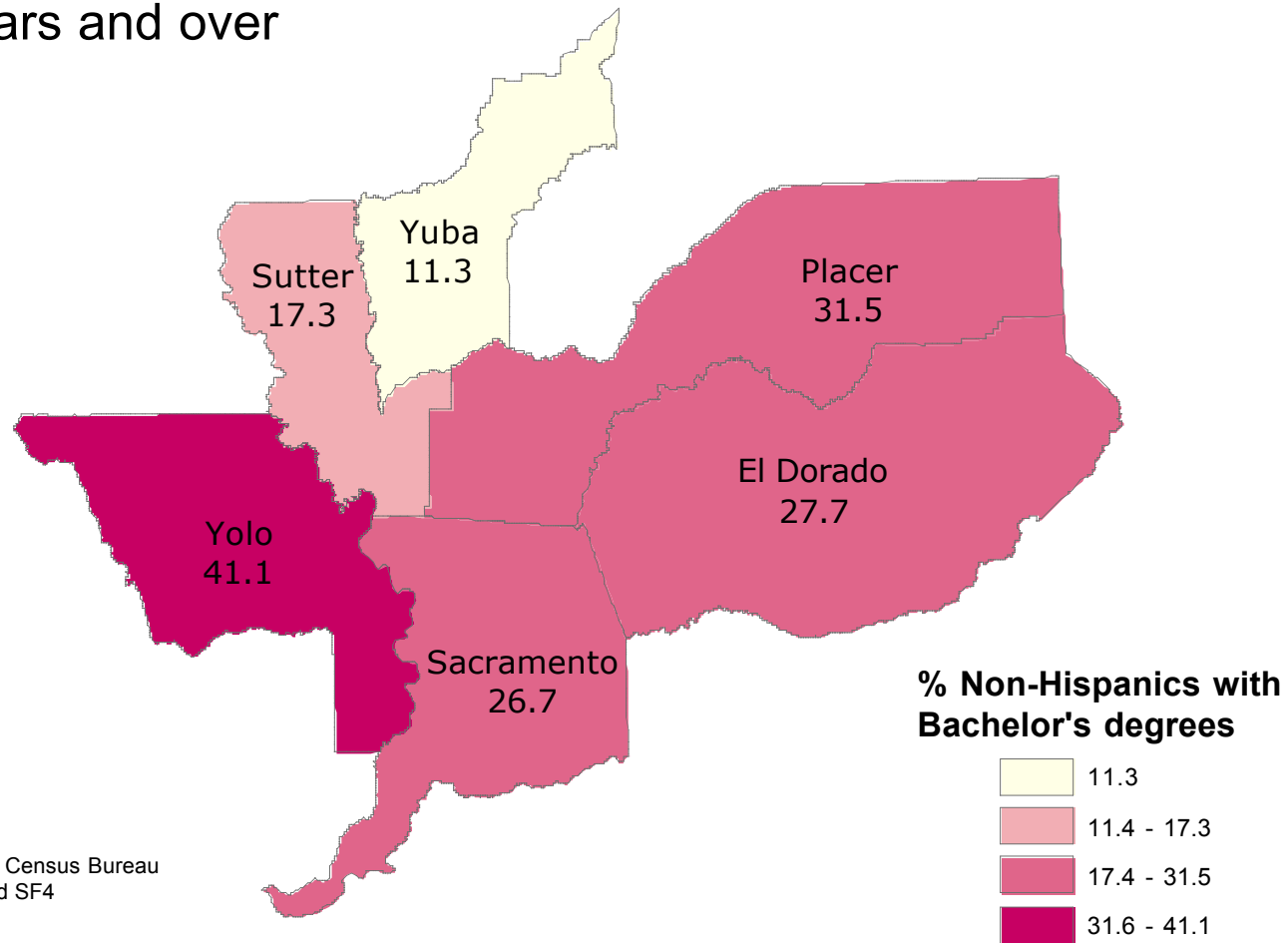
Source: U.S. Census Bureau  
2000 SF2 and SF4

UTM Projection, Zone 10N, WGS-84

Map by Julie Young, 8 June 2010



# Percent of Non-Hispanics that have a Bachelor's Degree or Higher Compared to the Non-Hispanic Population 25 Years and over

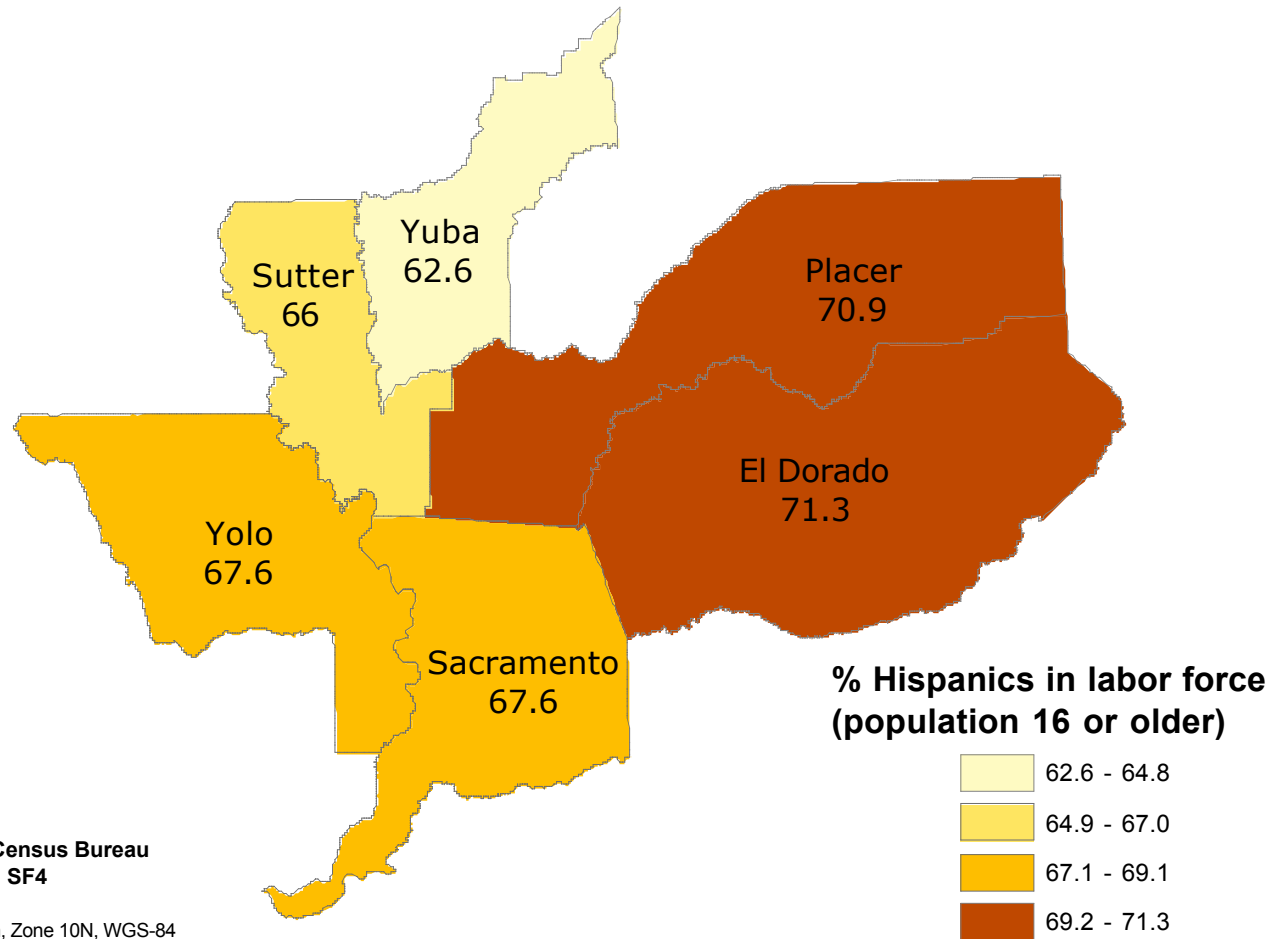


Source: U.S. Census Bureau  
2000 SF2 and SF4

UTM Projection, Zone 10N, WGS-84

Map by Julie Young, 8 June 2010

# Percent of Hispanics in the Labor Force Compared to Hispanic Population 18 years and Older

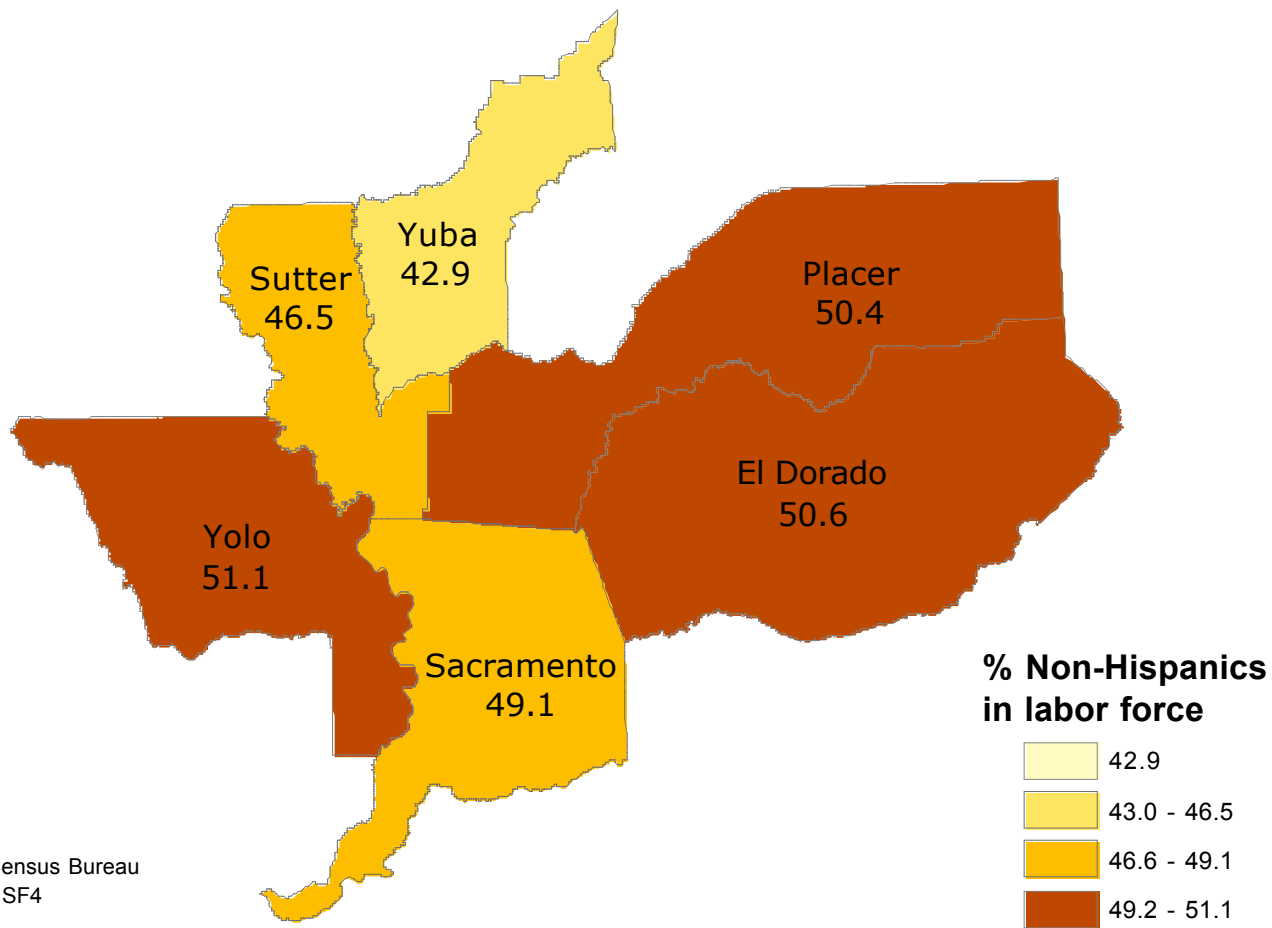


Source: U.S. Census Bureau  
2000, SF2 and SF4

UTM Projection, Zone 10N, WGS-84



# Percent of Non-Hispanics in the Labor Force Compared to the Non-Hispanic Population 18 years and Older



Source: U.S. Census Bureau  
2000, SF2 and SF4

UTM Projection, Zone 10N, WGS-84

Map by Julie Young, 8 June 2010

# TIME

IN PARTNERSHIP WITH



SEARCH

HOME U.S. ELECTION '08 WORLD BLOGS BUSINESS & TECH HEALTH & SCIENCE ENTERTAIN



Johnson & Johnson  
WORLDWIDE PARTNER

Our knee and hip solutions  
can help you regain mobility.

Find out how

Watch Coach K's story

Replay

## Welcome to America's Most Diverse City

By RON STODGHILL AND AMANDA BOWER

Sunday, Aug. 25, 2002



Many William Land  
Elementary students speak  
a language other than  
English

LYNSEY ADDARIO/CORBIS SABA FOR  
TIME

Sequoia Way is easy for travelers to overlook. Nestled in the middle-class neighborhood of Village Park on the south side of Sacramento, Calif., it is an unremarkable stretch of single-story frame houses. But if you stroll a bit along the winding road and visit Sequoia Way's residents, you will quickly realize there's something extraordinary

ARTICLE TOOLS

- Print
- Email
- Reprints
- Sphere

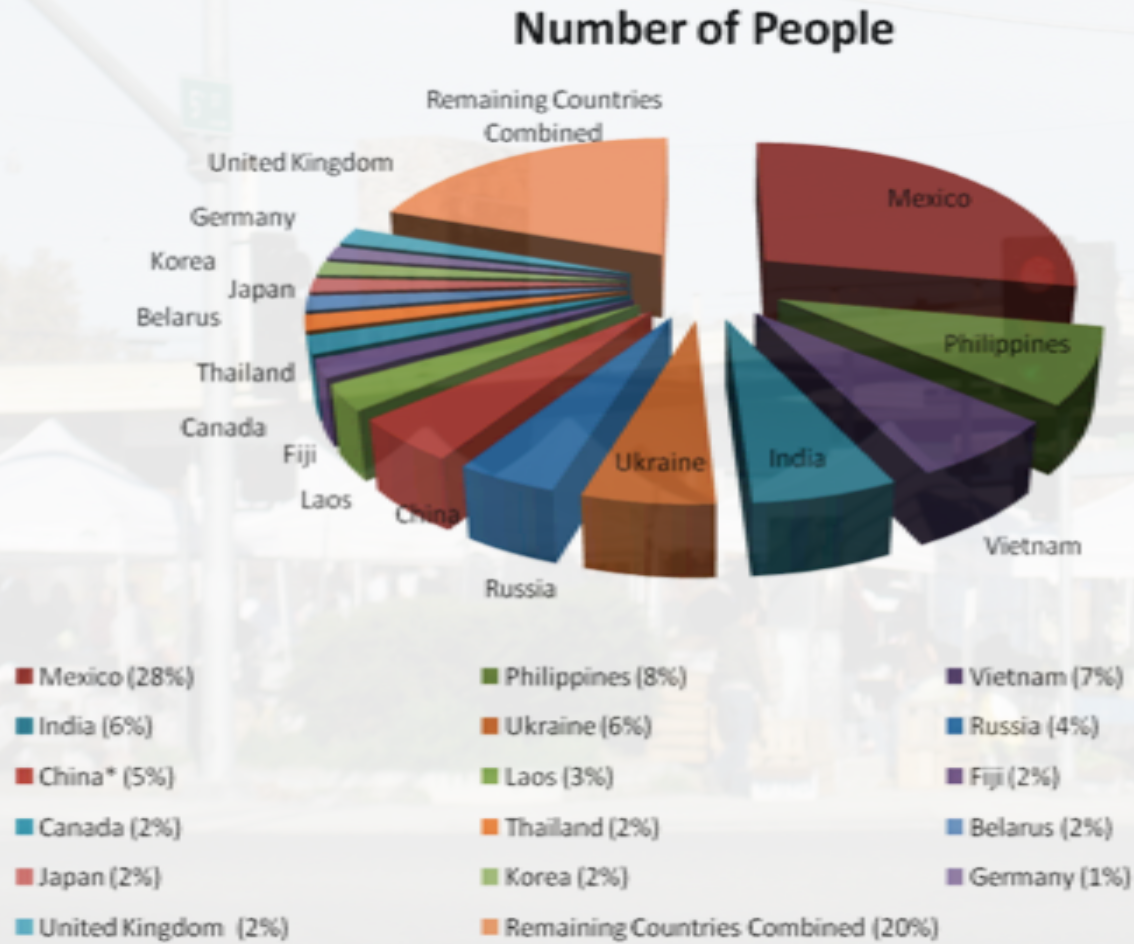
**Table 1**  
**Immigrant Population by Census Year Sacramento MSA 1990, 2000 and 2005 PUMS 5%**

1990 Sacramento MSA*		2000 Sacramento MSA*		2005 Sacramento MSA*	
Country of Birth	Total	Country of Birth	Total	Country of Birth	Total
<b>Total</b>	<b>140,253</b>	<b>Total</b>	<b>261,356</b>	<b>Total</b>	<b>356,829</b>
Mexico	27,979	Mexico	73,365	Mexico	99,513
Philippines	11,574	Philippines	18,998	Philippines	29,742
Vietnam	10,742	Vietnam	18,293	Vietnam	23,823
Laos	8,946	Laos	14,277	India	22,823
China*	10,186	Ukraine	12,652	Ukraine	20,131
Canada	5,727	China*	14,409	Russia*	15,447
Germany**	5,206	India	8,952	China**	17,227
United Kingdom***	5,235	Russia*****	8,377	Laos	10,258
Japan	3,560	Canada	6,673	Fiji	7,195
Korea****	3,161	Germany	5,487	Canada	7,083
Fiji	2,725	Thailand	5,477	Thailand	6,074
USSR	2,712	Fiji	5,339	Belarus	5,716
Thailand	2,662	Korea****	4,914	Japan	5,537
Iran	2,660	Japan	4,065	Korea	5,450
India	2,180	United Kingdom***	5,579	Germany	5,054
Taiwan	1,964	Iran	3,409	United Kingdom	6,735
Italy	1,651	El Salvador	3,032	Romania	4,125
Romania	1,448	Pakistan	2,814	Taiwan	3,584
Peru	1,139	Taiwan	2,687	Pakistan	3,079
El Salvador	1,134	Romania	2,628	El Salvador	2,928
Pakistan	1,094	Moldova	1,926	Moldova	2,856
Netherlands	972	Guatemala	1,228	Uzbekistan	2,646
Portugal	937	Italy	1,206	Guatemala	2,578
Nicaragua	912	Nicaragua	1,100	Peru	2,531
France	852	Uzbekistan	1,095	Malaysia	2,304
Yugoslavia	749	Armenia	1,074	Iran	2,071
Spain	681	Peru	1,018	Indonesia	1,762
Cambodia	666	Greece	1,000	Nigeria	1,545
Greece	582	Cambodia	996	Armenia	1,447
Jordan	569	Nigeria	991	Singapore	1,437

Source: Gifford Center for Population Studies, UC Davis



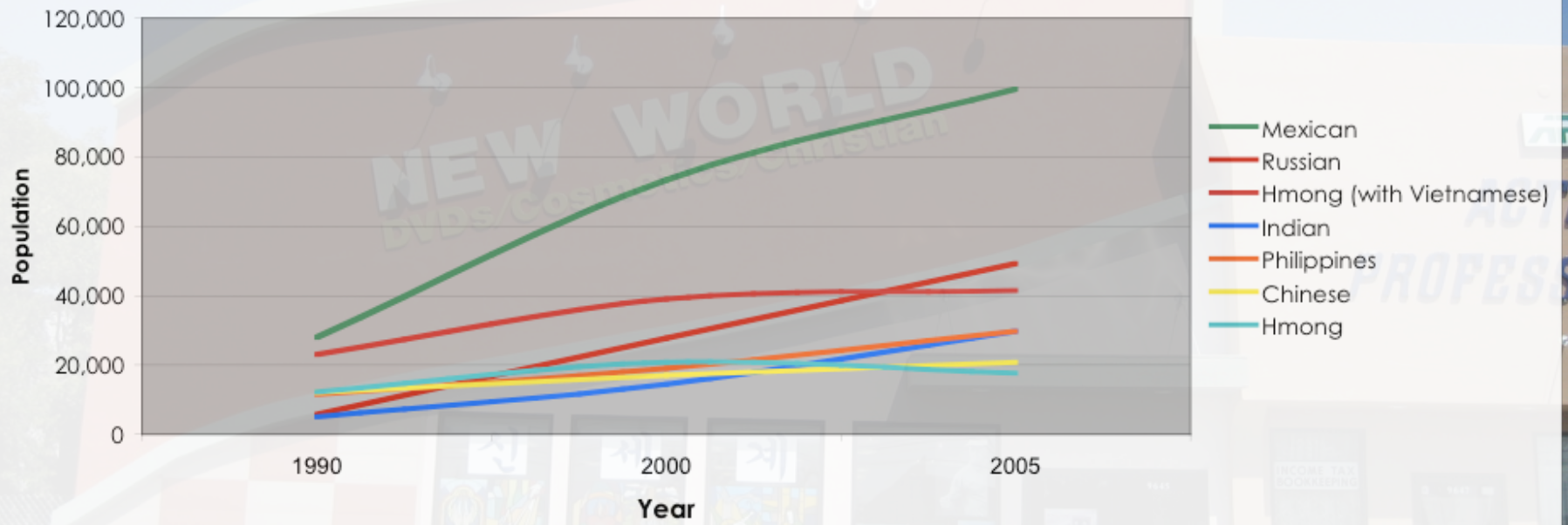
# Top Foreign Born Populations in Sacramento MSA, 2005



Source: U.S. Census 1990, 2000, 20

Source: Gifford Center for Population Studies, UC Davis

### Sacramento Multi-ethnic Population Growth





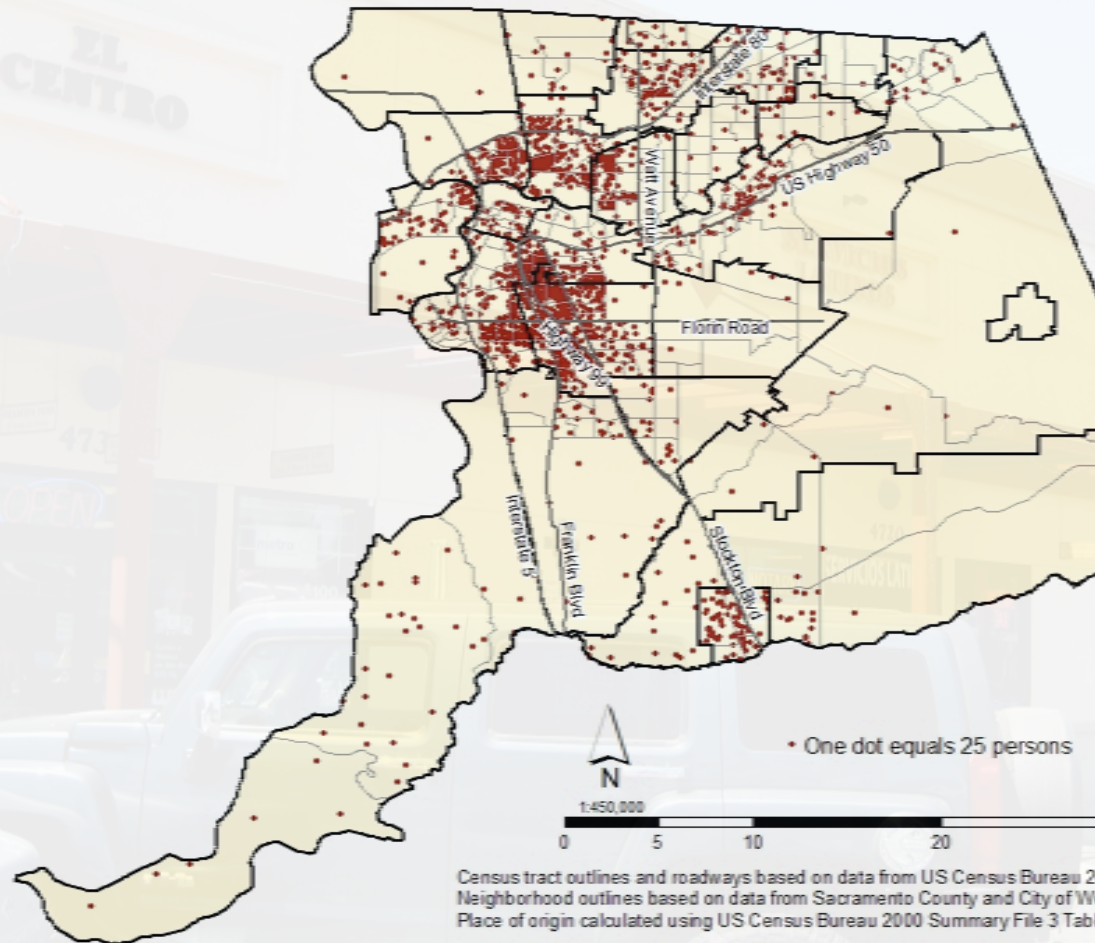
# Sacramento Regional Communities



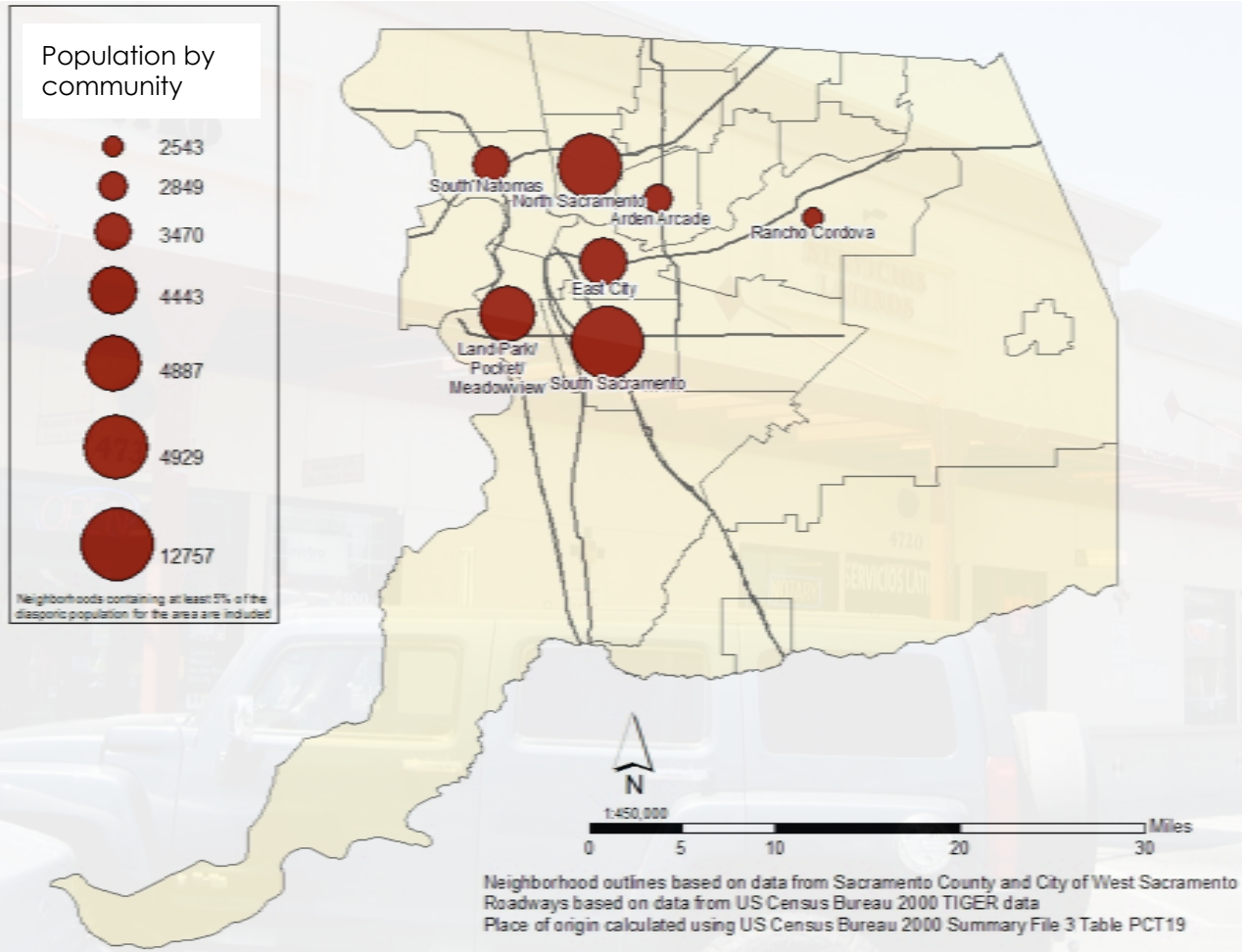
Community names and outlines based on data from Sacramento County and City of West Sacramento  
Highways and roads based on US Census Bureau 2000 Tiger data



# Hispanic Communities

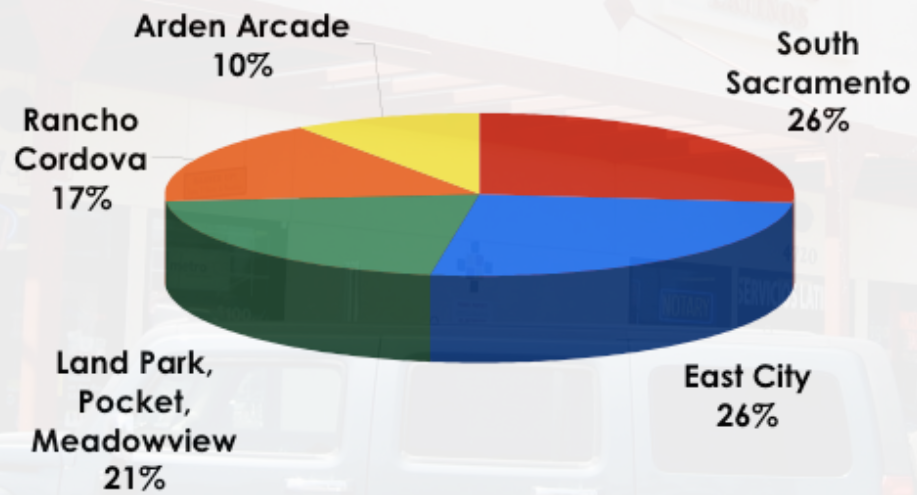


# Hispanic Communities

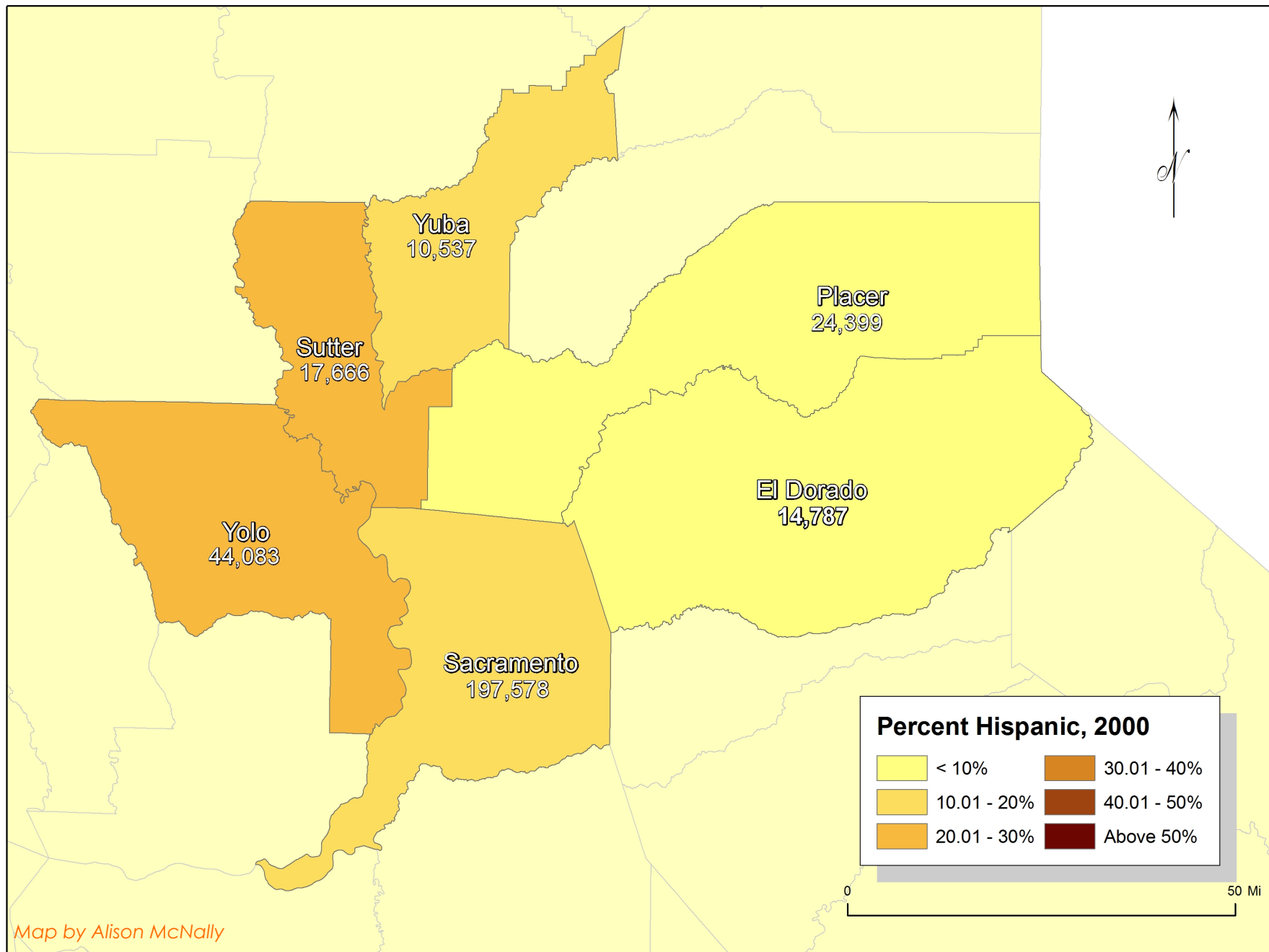


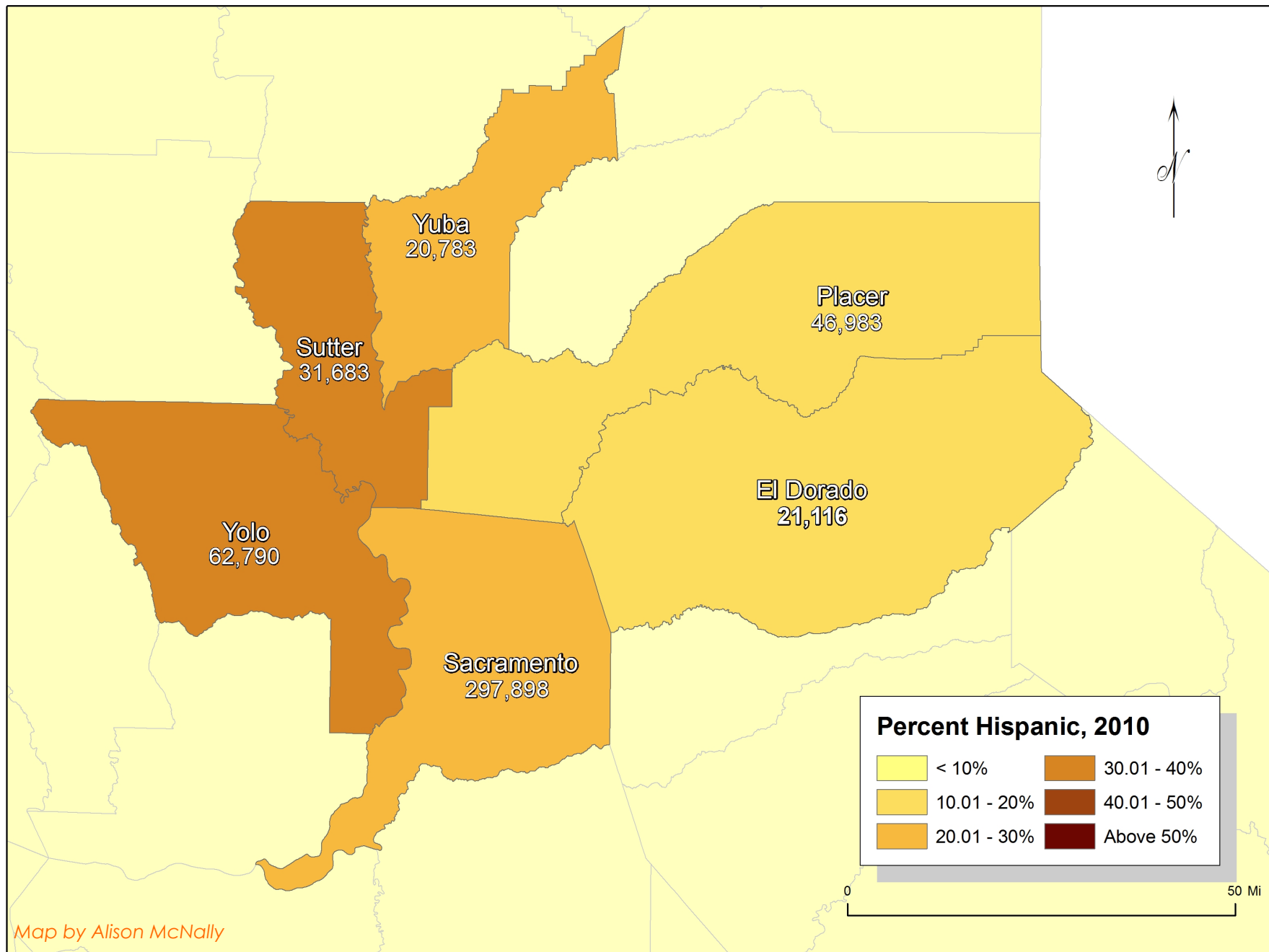


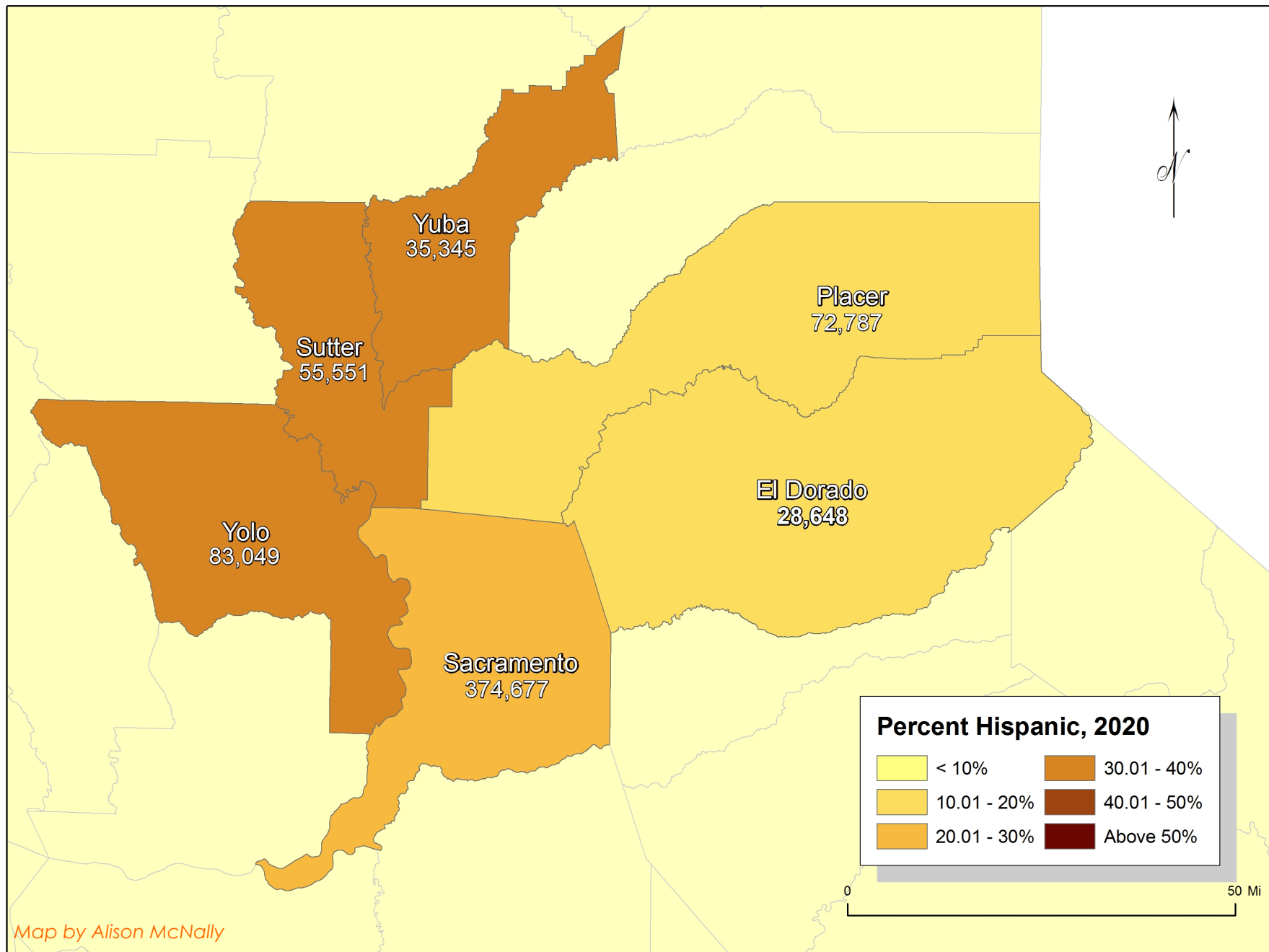
### Concentration of Hispanics by Neighborhood (2000)



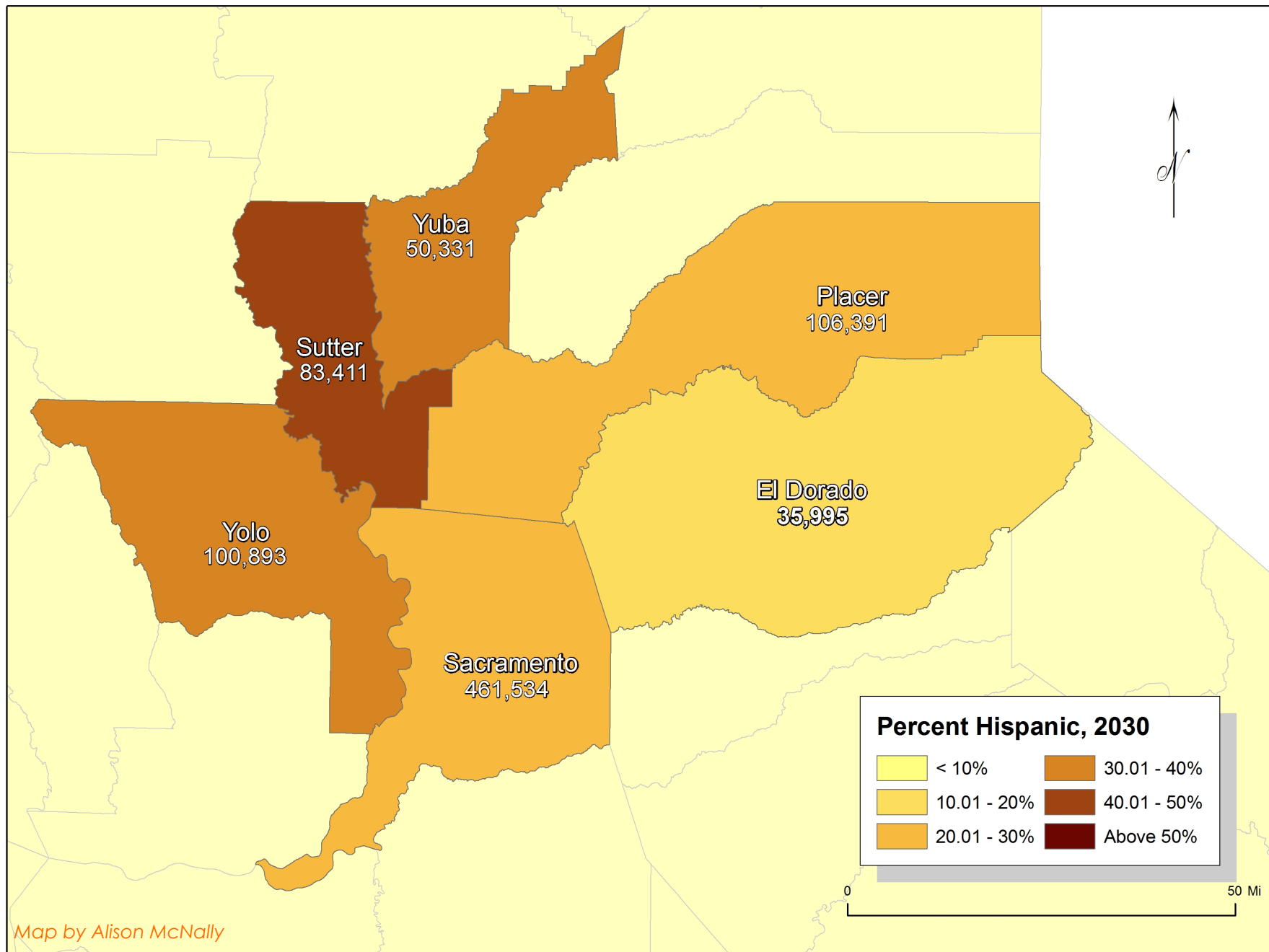


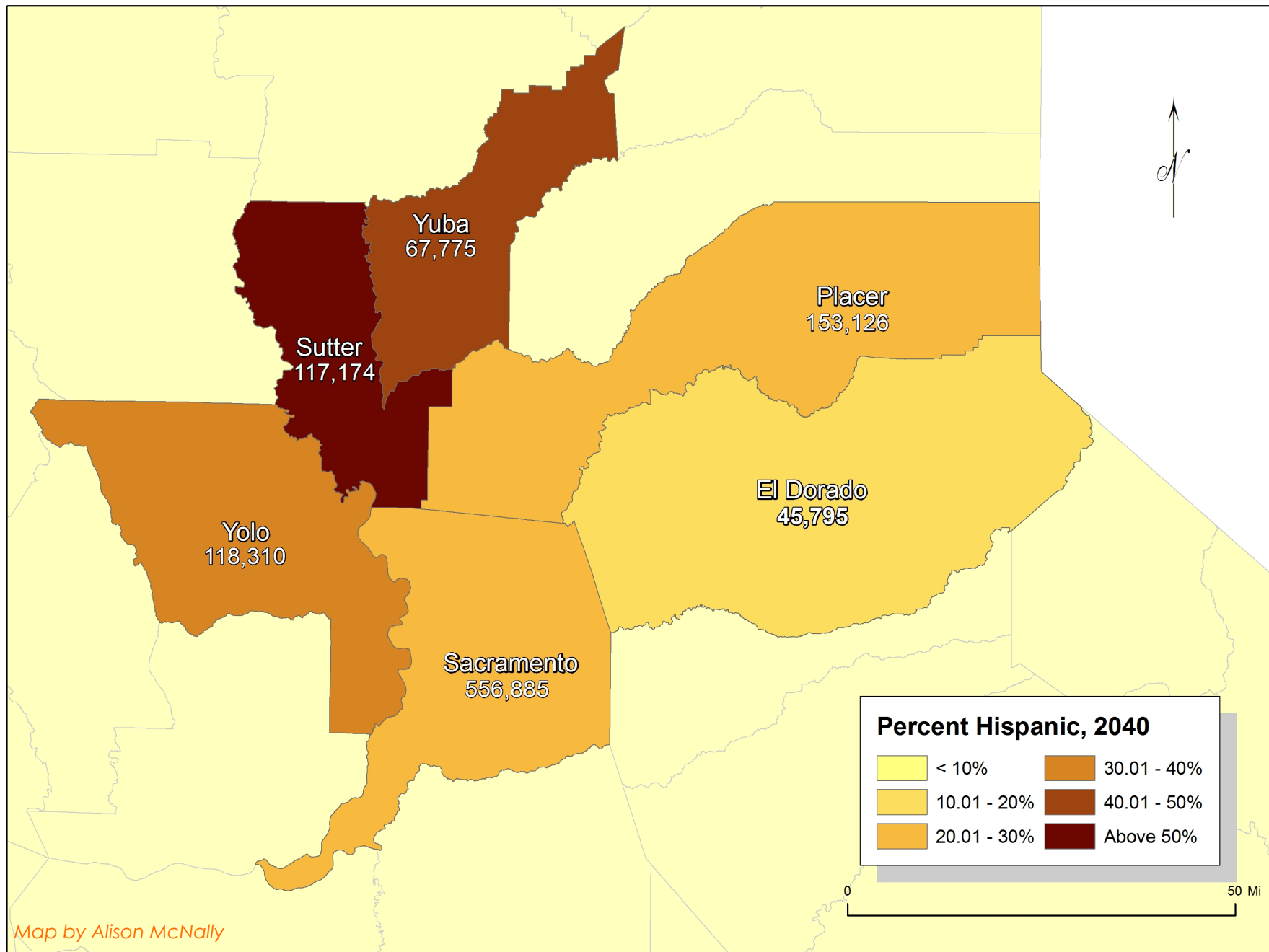


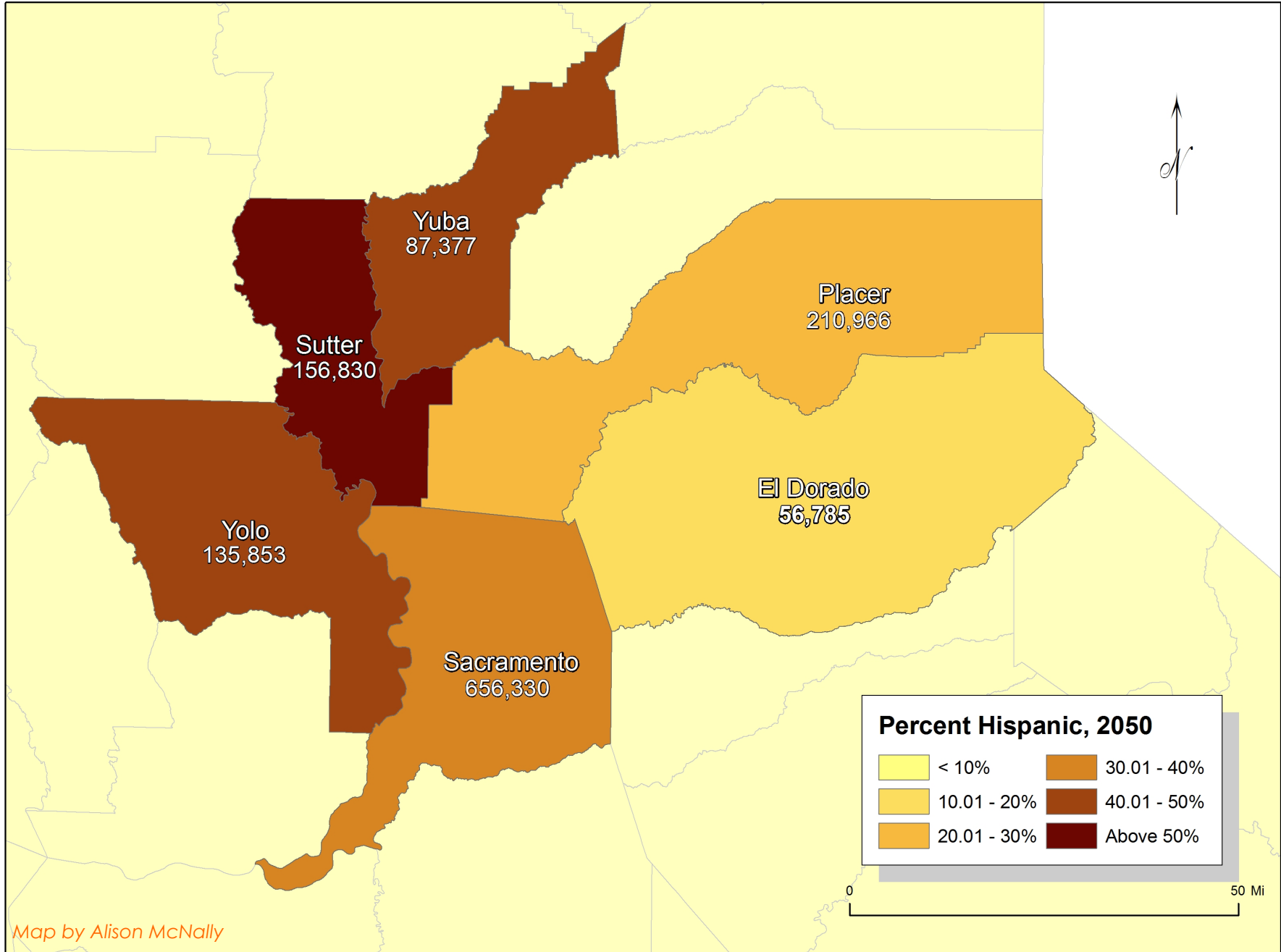














# Where we are and where are we going: implications for regional planning and decision-making



Image Source: Barbara Smith

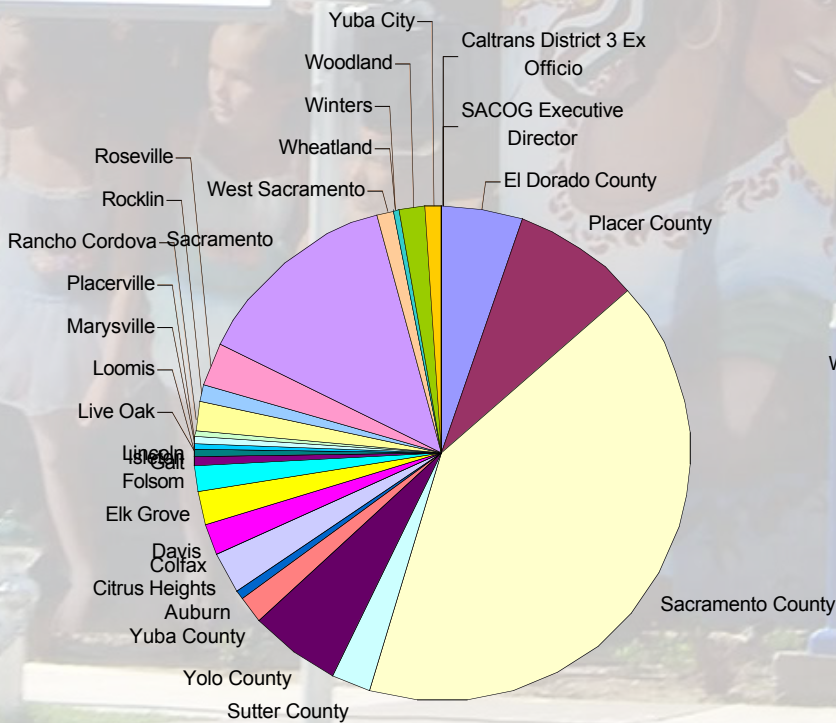
# Where we are and where we are going: implications for regional planning and decision-making

- Uneven geographies of opportunity and accessibility
- A convergence of demographics and disparities
- Today's youth are tomorrow's economic engine
- A regional vision for a growing Hispanic region
- Current and future leadership is key

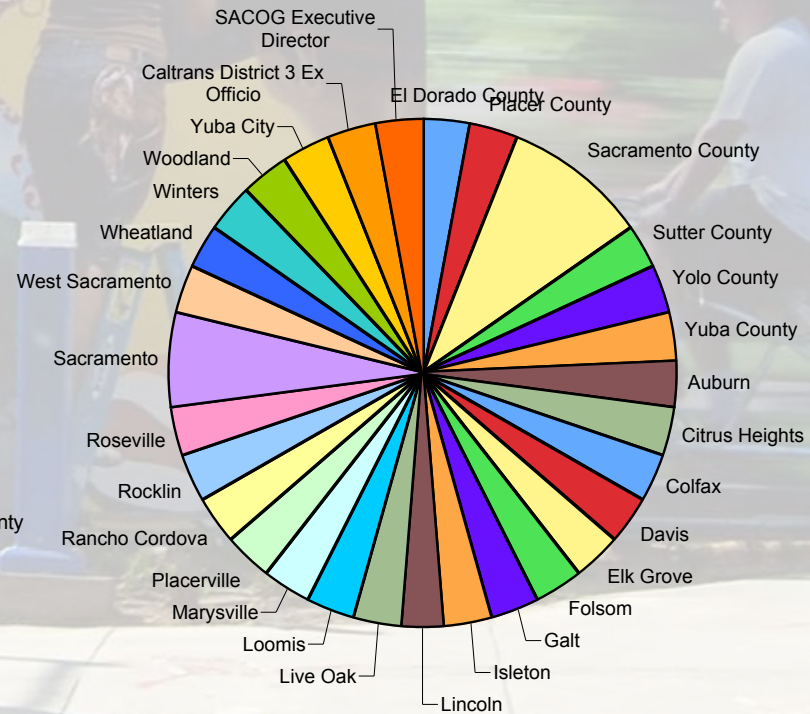


# Where we are and where are we going: implications for regional planning and decision-making

## Population Distribution of SACOG Region



## SACOG Board Members



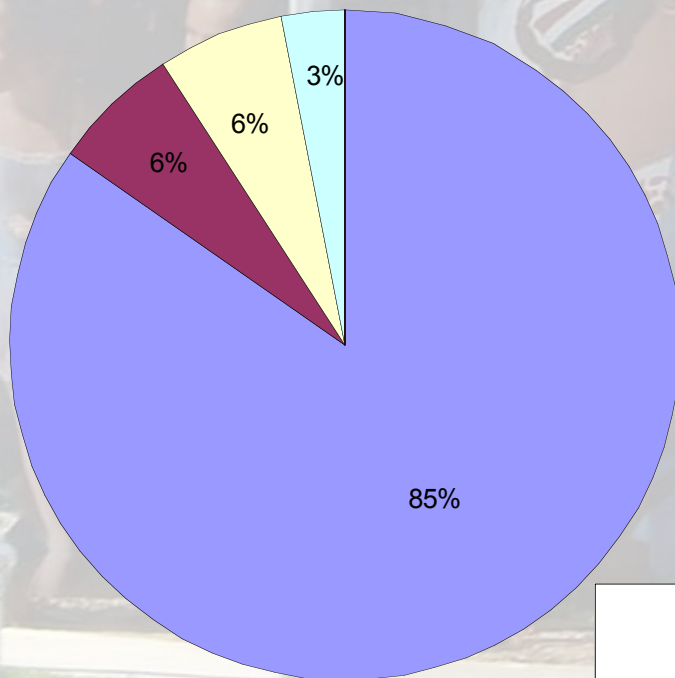
Source: UC Davis Health Youth/Healthy Regions



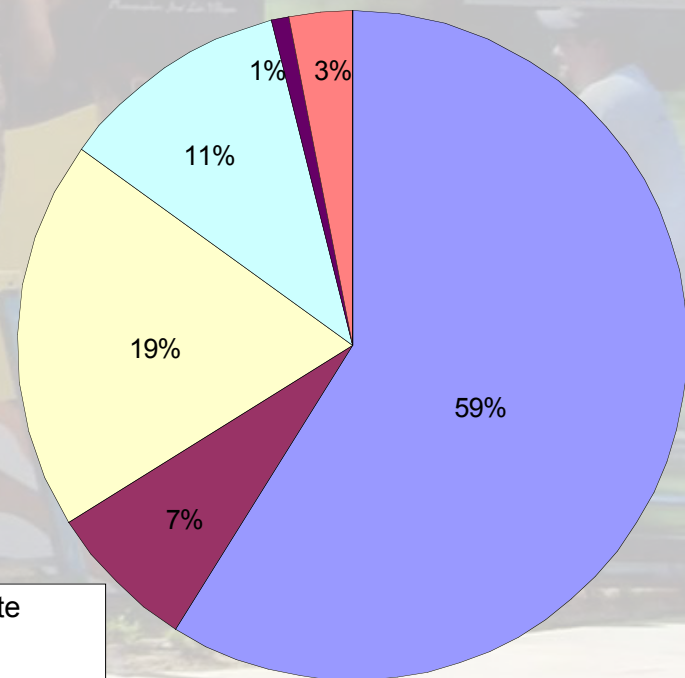
# Where we are and where are we going: implications for regional planning and decision-making

## Racial/Ethnic Composition of SACOG Voting Board Members Compared to Racial/Ethnic Composition of SACOG Region, 2010

Current Board Composition



Region's Composition



- Non-Hispanic White
- Black
- Latino
- Asian
- Native American
- Other/Mixed

Sources: 2010 SACOG Board of Directors,  
UC Davis Health Youth/Healthy Regions

# Acknowledgements

This presentation was given at the Inaugural State of the Hispanic Community organized by the Sacramento Hispanic Chamber of Commerce. The suggested citation is: Rios, Michael. 2010. Hispanics & the changing face of the Sacramento Region and beyond. Presented at the Inaugural State of the Hispanic Community, Sacramento Hispanic Chamber of Commerce, June 9, 2010, Sacramento, CA.

The presentation was made possible through research supported by the USDA Cooperative State Research, Education and Extension Service, Hatch project # CA-D\*-END-7717-H. I would like to thank Alison McNally, research assistant for the Sacramento Diasporas Project, as well as Julie Young from the College of Agriculture and Environmental Sciences Informatics Center, who created maps for the presentation. Preliminary research was conducted through a 2008 Gifford Center for Population Studies grant titled "Valley Homelands: The Making of Global Sacramento" with David Kyle, Executive Director of the Gifford Center for Population Studies, UC Davis.

Sources of information for this presentation can be found at:

California Department of Finance: <http://www.dof.ca.gov/research/demographic/data/>  
California Dropout Research Project: <http://cdrp.ucsb.edu/>  
College of Agriculture and Environmental Sciences Informatics Center: <http://ic.ucdavis.edu/>  
Gifford Center for Population Studies, UC Davis: <http://gifford.ucdavis.edu>  
Healthy Youth/Healthy Regions, Center for Regional Change, UC Davis: <http://regionalchange.ucdavis.edu/hyhr>  
Migration Policy Institute: <http://www.migrationpolicy.org/>  
Pew Hispanic Center: <http://pewhispanic.org/>  
Sacramento Diasporas Project, UC Davis Center for Regional Change: <http://regionalchange.ucdavis.edu/>  
Selig Center for Economic Growth: <http://www.terry.uga.edu/selig/>  
The Conference Board Research Center: <http://www.conference-board.org/>  
U.S. Census Bureau: <http://www.census.gov/>  
U.S. Bureau of Economic Analysis: <http://www.bea.gov/>  
USC Population Dynamics Group: <http://www.usc.edu/schools/sppd/research/popdynamics/>  
USC Program for Environmental and Regional Equity: <http://college.usc.edu/pere/publications/>

Image credits:

Smith, Barbara: [http://west-sacramento.blogspot.com/2008\\_04\\_01\\_archive.html](http://west-sacramento.blogspot.com/2008_04_01_archive.html)  
WordPress.com: <http://latinamericanusings.wordpress.com/2009/03/19/notes-from-the-immigration-battlefield/>  
YAMEAN Project (Youth Actively Mastering Each Achievement Now!): <http://tcsip.tarjancenter.ucla.edu/stories.cfm>