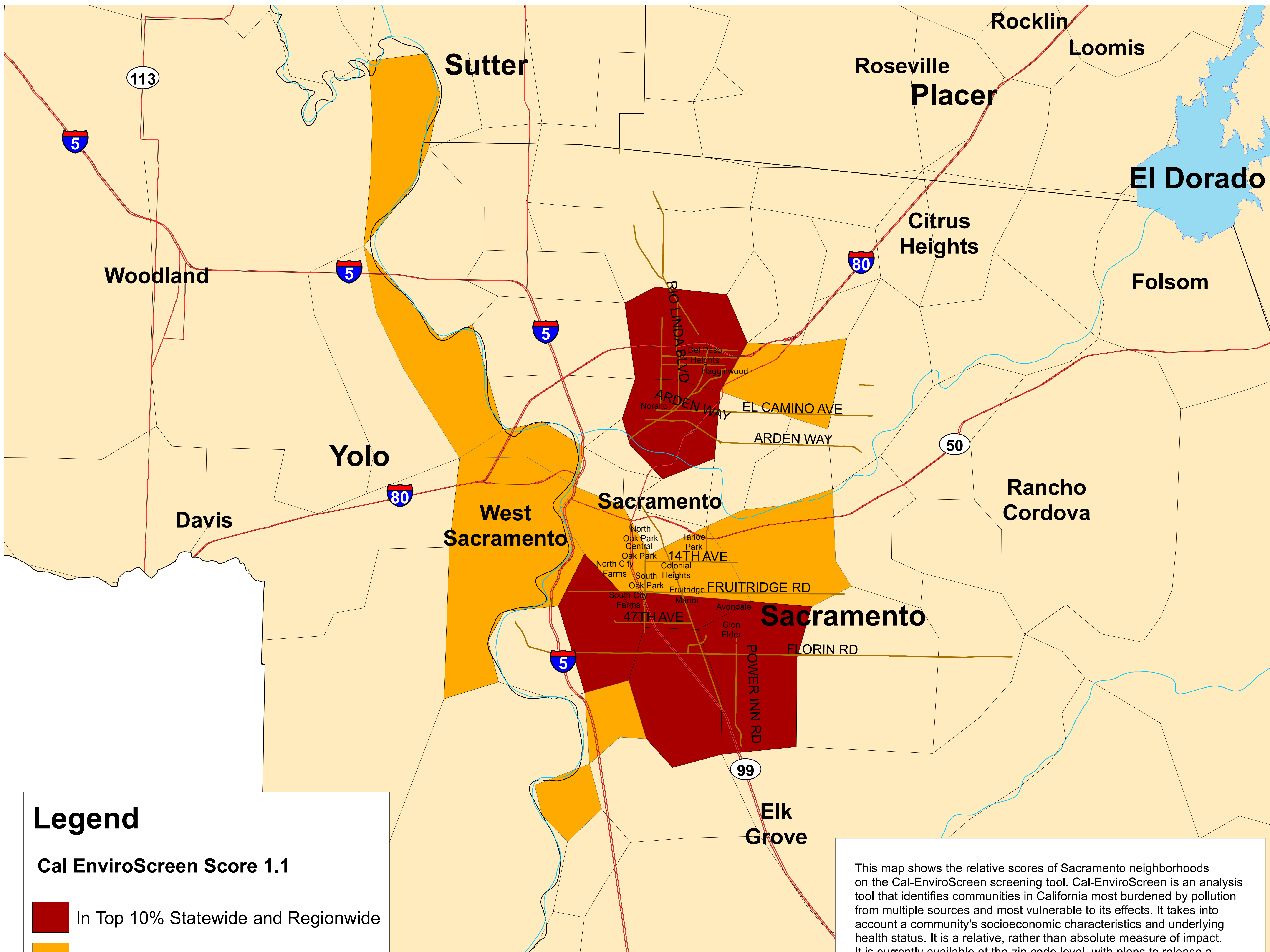


Areas Disproportionately Burdened by Multiple Sources of Pollution

Cal-EnviroScreen Environmental Health Screening Tool

Sacramento Region by Zip Code



Legend

Cal EnviroScreen Score 1.1

- In Top 10% Statewide and Regionwide
- In Top 10% Regionwide only
- Not in Top 10%

This map shows the relative scores of Sacramento neighborhoods on the Cal-EnviroScreen screening tool. Cal-EnviroScreen is an analysis tool that identifies communities in California most burdened by pollution from multiple sources and most vulnerable to its effects. It takes into account a community's socioeconomic characteristics and underlying health status. It is a relative, rather than absolute measure of impact. It is currently available at the zip code level, with plans to release a census tract tool in 2014. For more information see <http://oehha.ca.gov/ej/pdf/CalEnviroScreenVer11report.pdf>.

Source: Cal EnviroScreen Version 1.1

